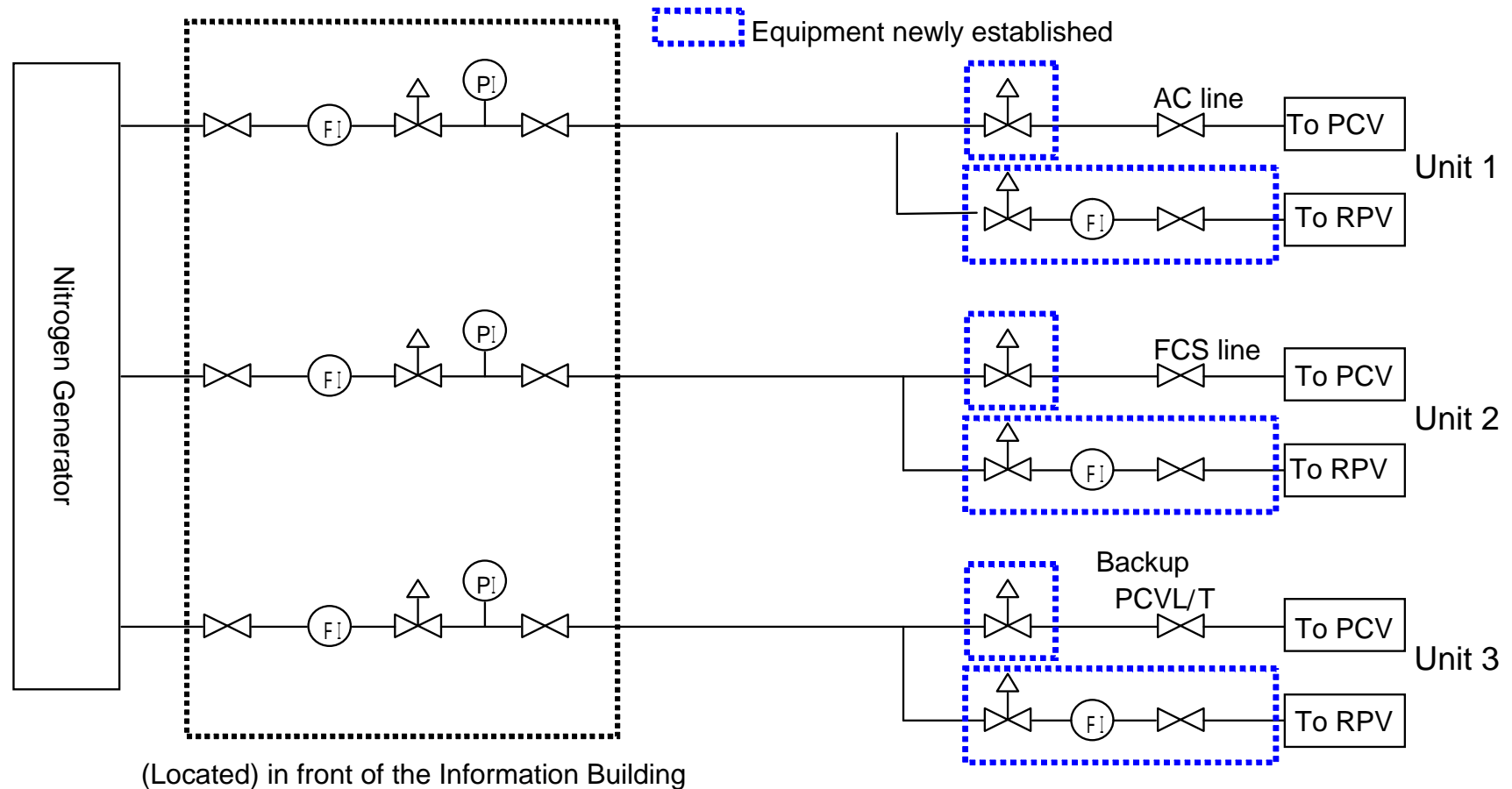


Establishment of New Routes for Nitrogen Injection into RPV at Units 1-3 of Fukushima Daiichi Nuclear Power Station

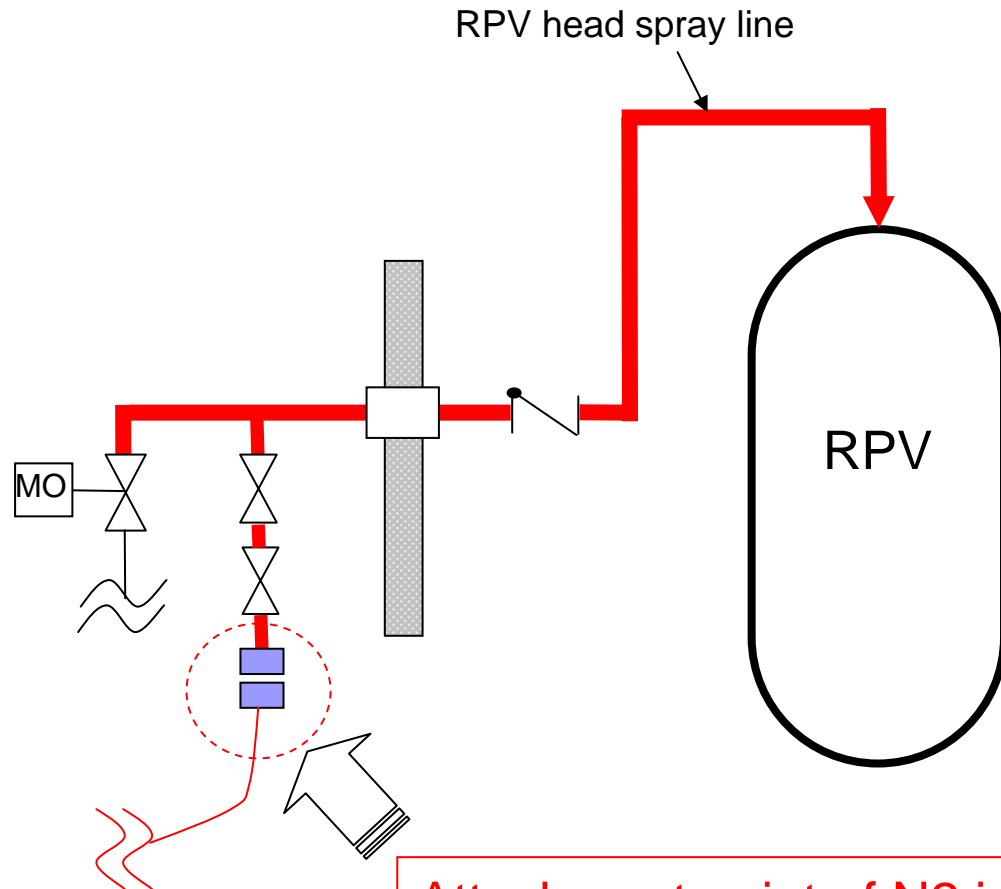
< Summary >

We have been operated nitrogen (N₂) injection at operation units in front of the information building as we had targeted PCVs only. Hereafter, in order to inject nitrogen into RPVs as well as PCVs, we established new routes and new units to operate injection respectively.



New Route for nitrogen injection to RPV at Unit 1

RPV head spray line will be used



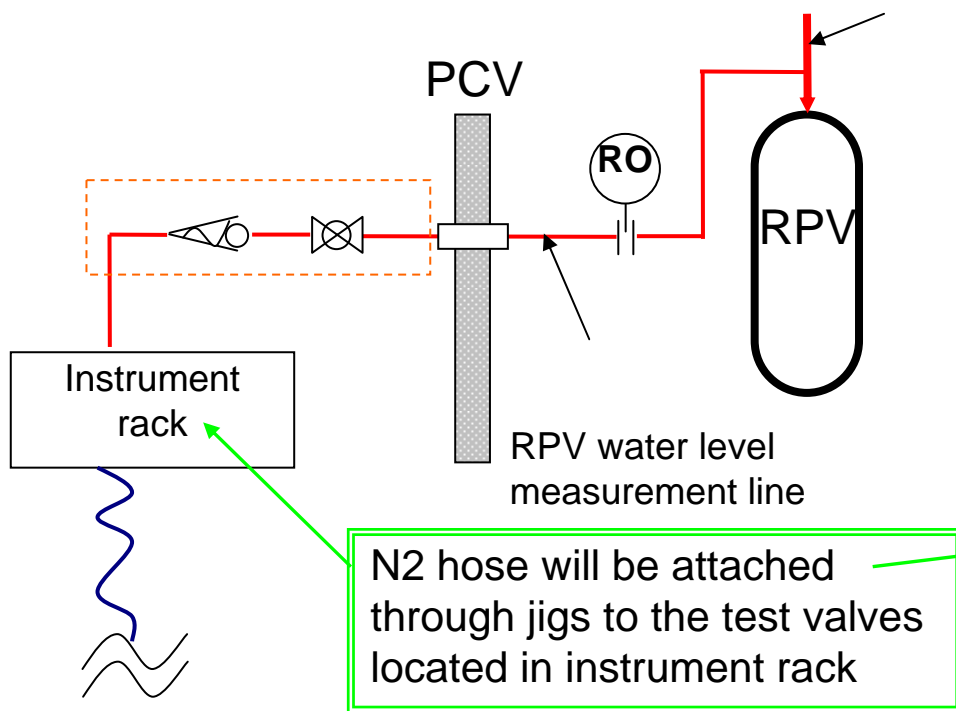
Attachment point of N2 injection



Nitrogen injection inlet
(hose attachment point)

New Routes for nitrogen injection to RPV at Unit 2 and Unit 3

RPV head spray line will be used



RPV head spray line is used

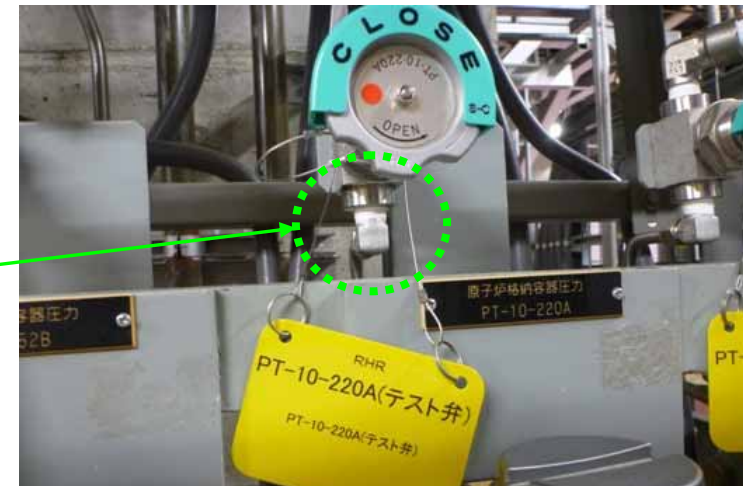


Image (Photo: taken in the Instrument rack at Unit 5)

Unit 3

