

**Fukushima Daiichi Nuclear
Power Plant
Situation of Solid Waste Storage**

Summary of the survey

1. Purpose

- Confirmation of the situation of the radioactive solid waste keeping and the storage building.

2. Object of the survey

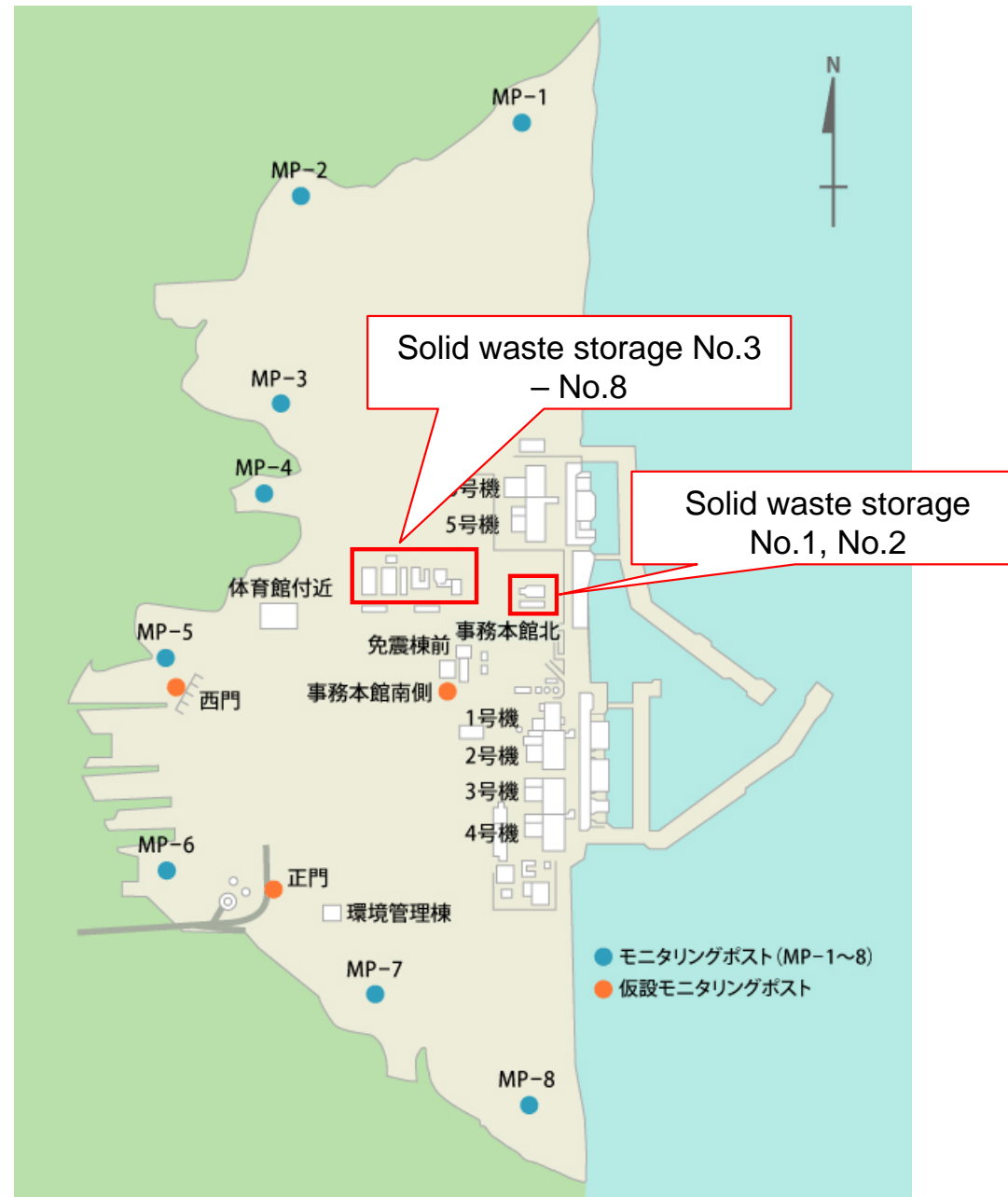
- Storage No. 5 – No. 8 which keep solid wastes (drums).

3. Content of the survey

- Visual confirmation of the insides of each storage.
- Measurement of dosage rate around and insides of each storage.

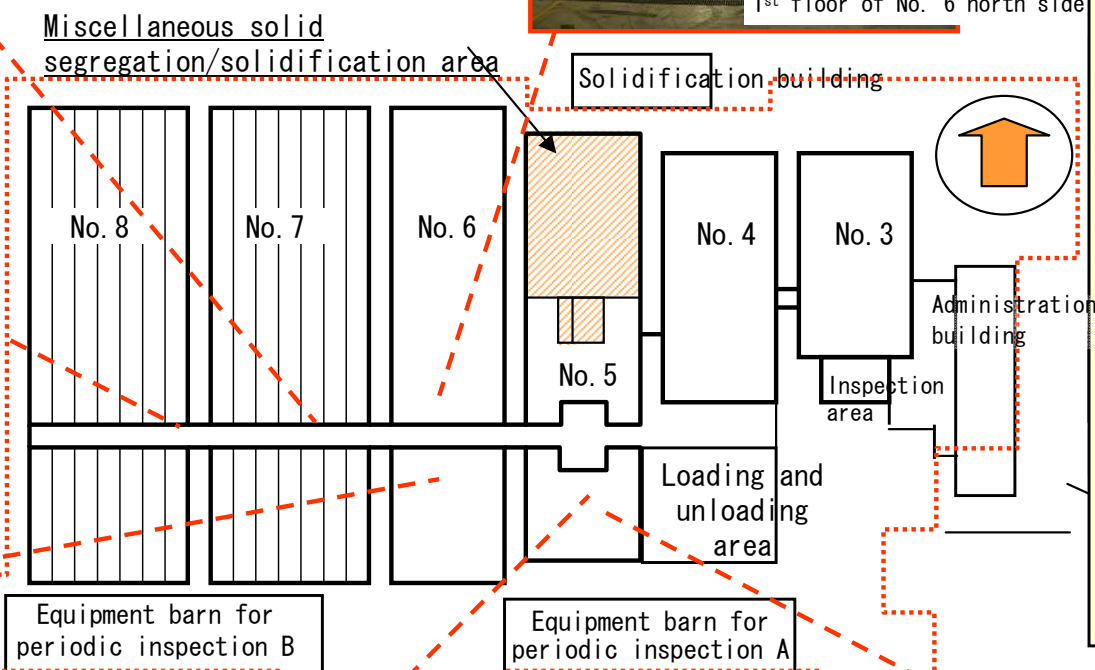
Measurement of radioactive materials density in air inside the storages.

Schematic layout of solid waste storage



Result of the survey (storage No. 5~8 : 1st floor)

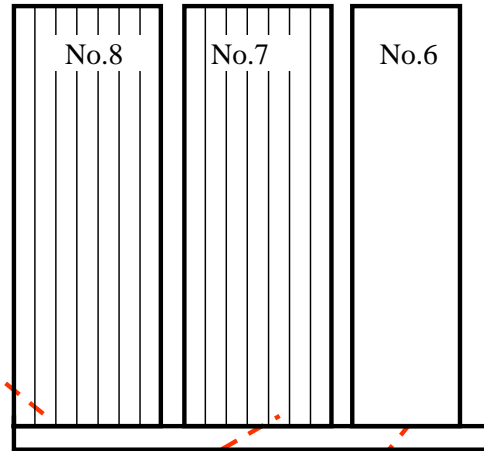
- Situation of the keeping in each storage



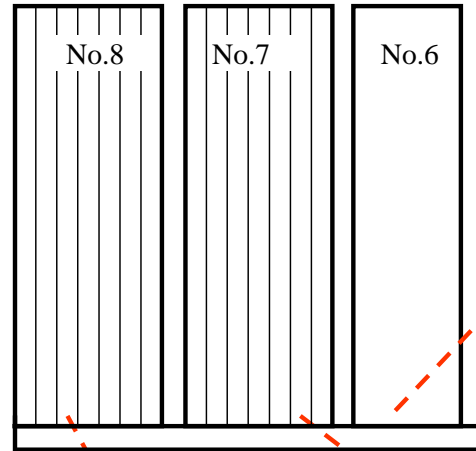
Result of the survey (No. 6 ~8 : 1st and 2nd basement)

- Situation of the keeping in each storage

1st basement

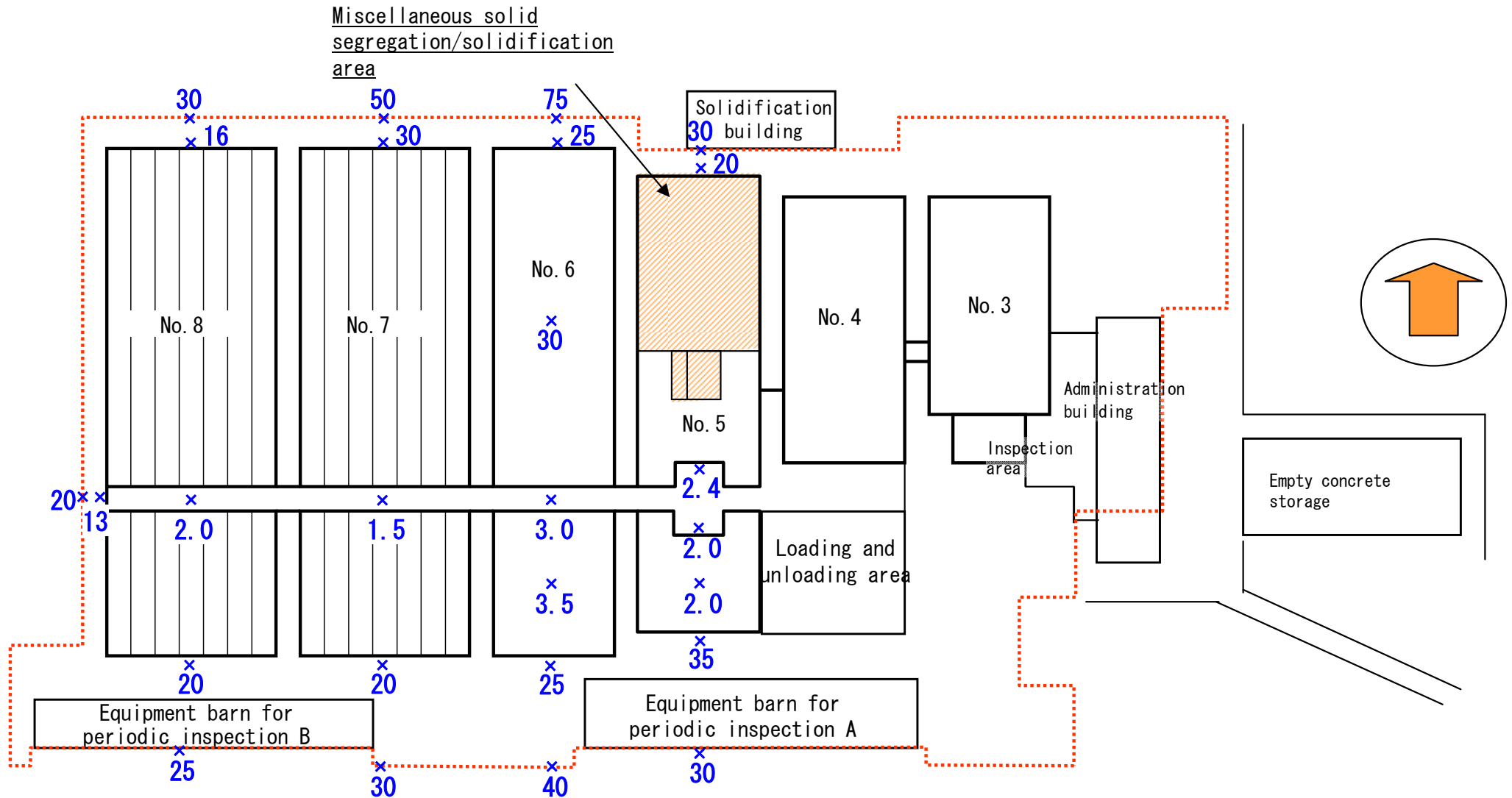


2nd basement



Result of the survey (No.5~8 : 1st floor dose equivalent rate)

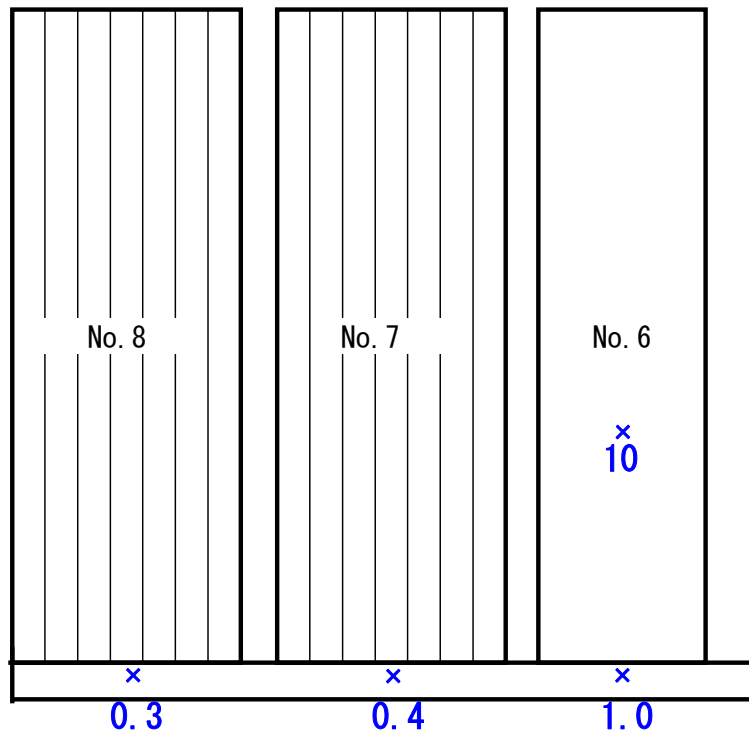
$\mu\text{Sv/h}$



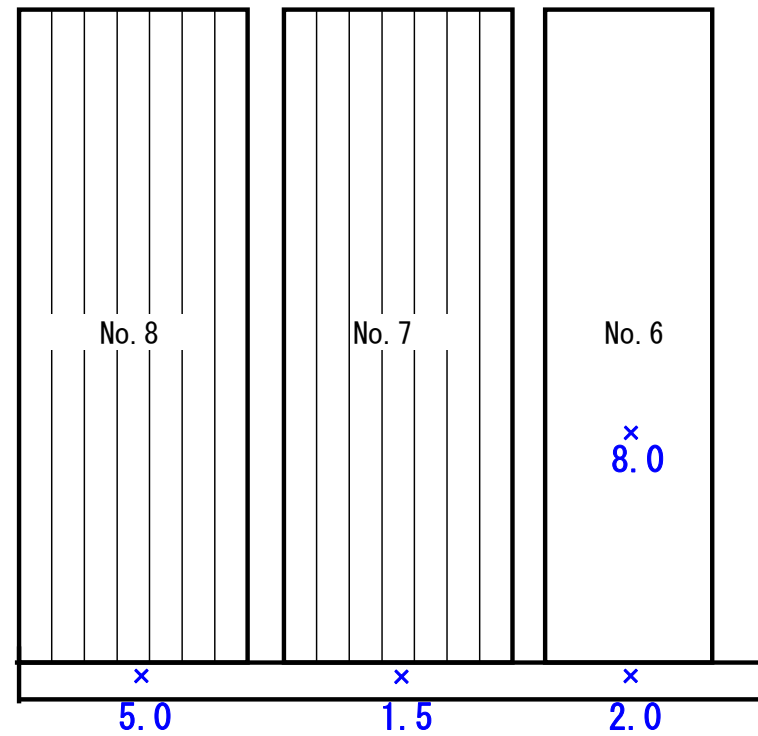
Result of the survey (No.6~8 : 1st and 2nd basement dose equivalent rate)

$\mu\text{Sv/h}$

1st basement



2nd basement



Result of the survey (summary)

- The dose rate inside the solid waste storage was about $0.3\sim 30\ \mu\text{Sv/h}$. It was equal to or lower than the rate around the storage.
- Radioactive materials cannot fly from the open drums since the contents of the drums are pieces of concrete contained in plastic bags and non-free-floating radioactive materials such as metallic pipes and steel stock etc. As a result of an analysis of radioactive materials in air, it was below measurable limit except a slight amount of Cs-137 was detected on the 1st floor of the storage No. 6 ($9.5\times 10^{-6}\text{Bq/cm}^3$). This Cs-137 appears to be due to extraneous effect.
- The proportion of the drums lying on their side was low (approx. 0.7%). It was confirmed that there were 32 drums opened by turnover in total.
- No significant damage of the buildings was not confirmed as a result of the visual inspection.

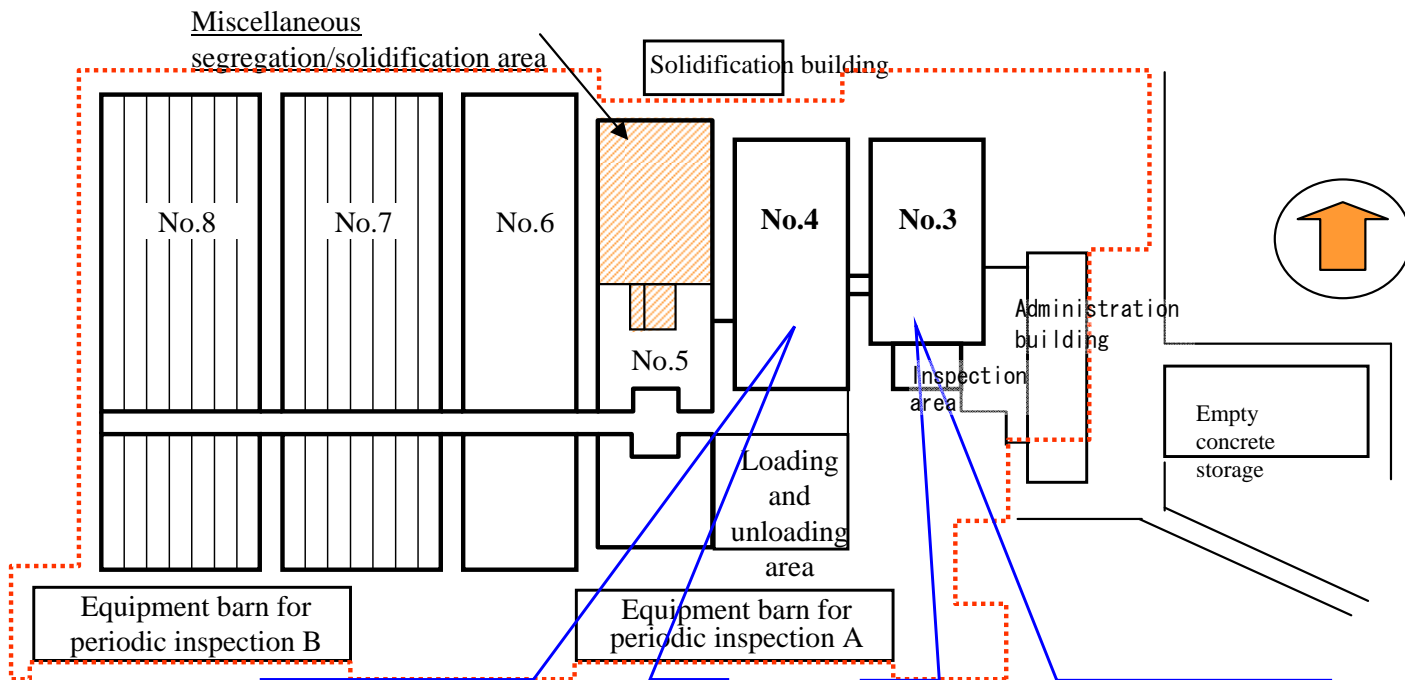
		Amount of keeping (equivalent to the number of drums)	Number of turnover
No.5	1 st floor	approx. 1,000	approx.40
No.6	1 st floor	approx. 12,000	approx.240
	1 st basement	approx. 15,000	approx.440
	2 nd basement	approx. 14,000	approx.280
No.7	1 st floor	approx. 23,000	approx.60
	1 st basement	approx. 20,000	approx.50
	2 nd basement	approx. 21,000	approx.20
No.8	1 st floor	approx. 27,000	None
	1 st basementy	approx. 21,000	approx.80
	2 nd basement	approx. 20,000	13※ ※large-size

Future plans

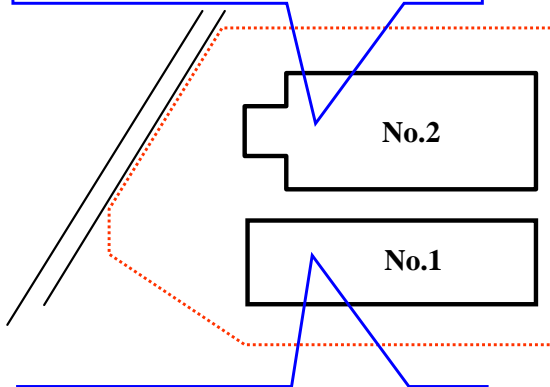
We will handle the following items as soon as possible:

- Restoration of the solid waste storage.
- Restoration of the open drums.
- Organizing the drums lying on their side.

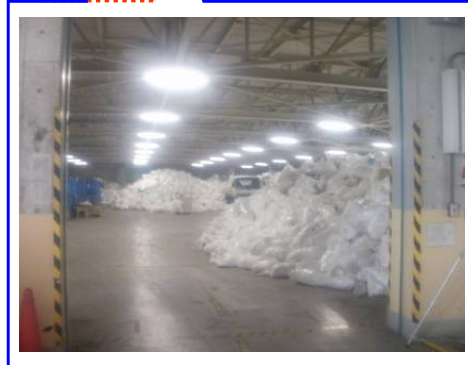
Reference : Solid waste storage Status of No.1~4



• Temporarily placed debris container



• Temporarily placed drums which had been used at the centralized radiation waste treatment facility etc.



• Temporarily placed protective clothing (used).



• A part of large-size waste in storage.