

Fukushima Daiichi Nuclear Power Station Unit 2 S/C Water Level Measurement by an Infrared Camera

< Reference >

June 12, 2012

Tokyo Electric Power Company

1. Measurement Date

June 12, 2012

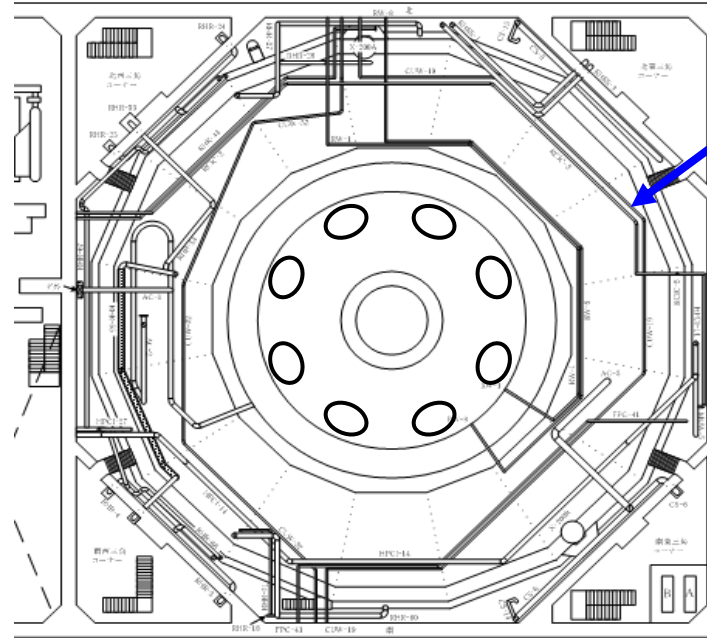
2. Measurement Location

Northeast triangle corner in front of the Torus Room entrance

3. Exposure dose

Planned: 8mSv/Person

Actual: 2.39mSv Max. (4 people)

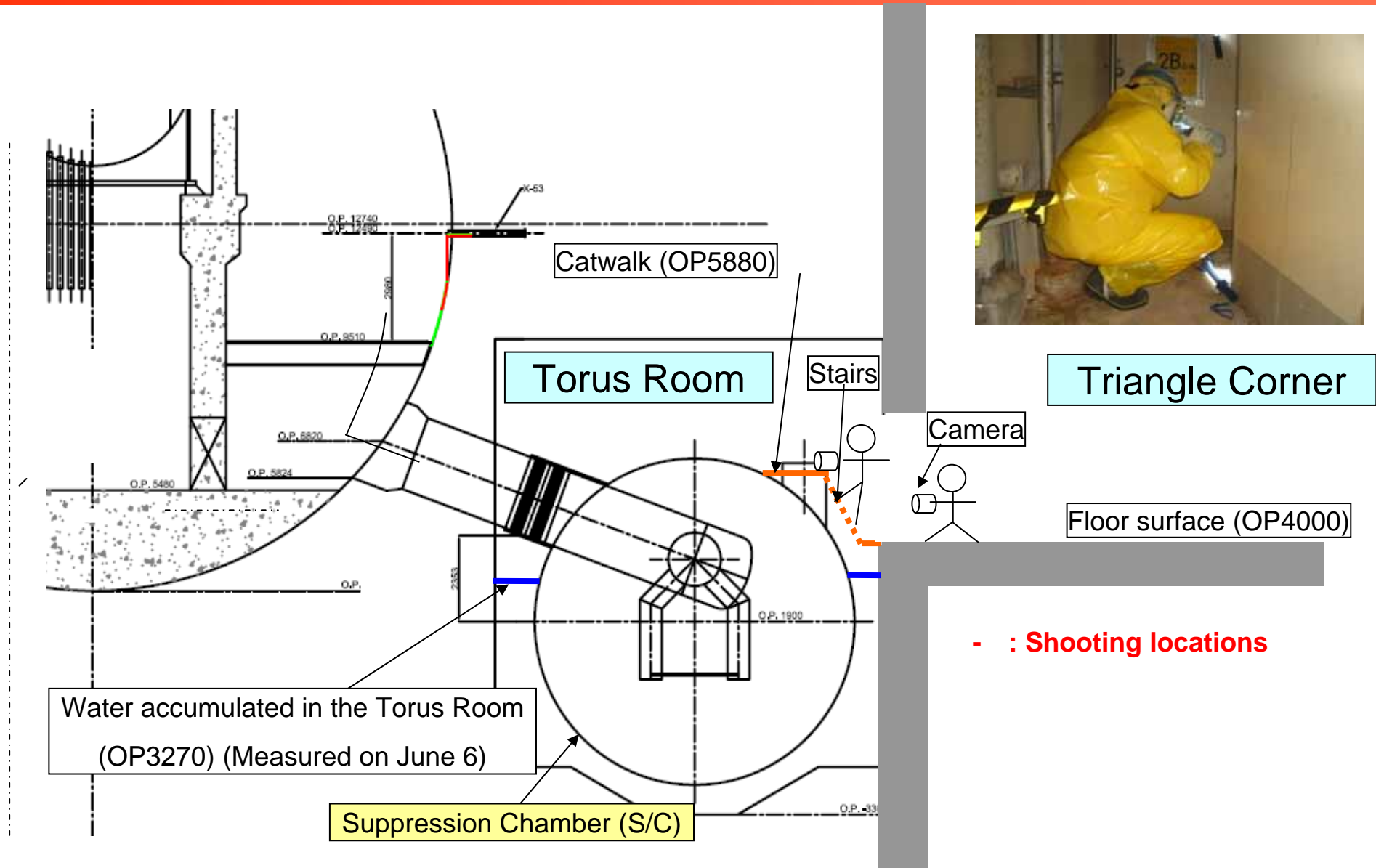


Shooting direction

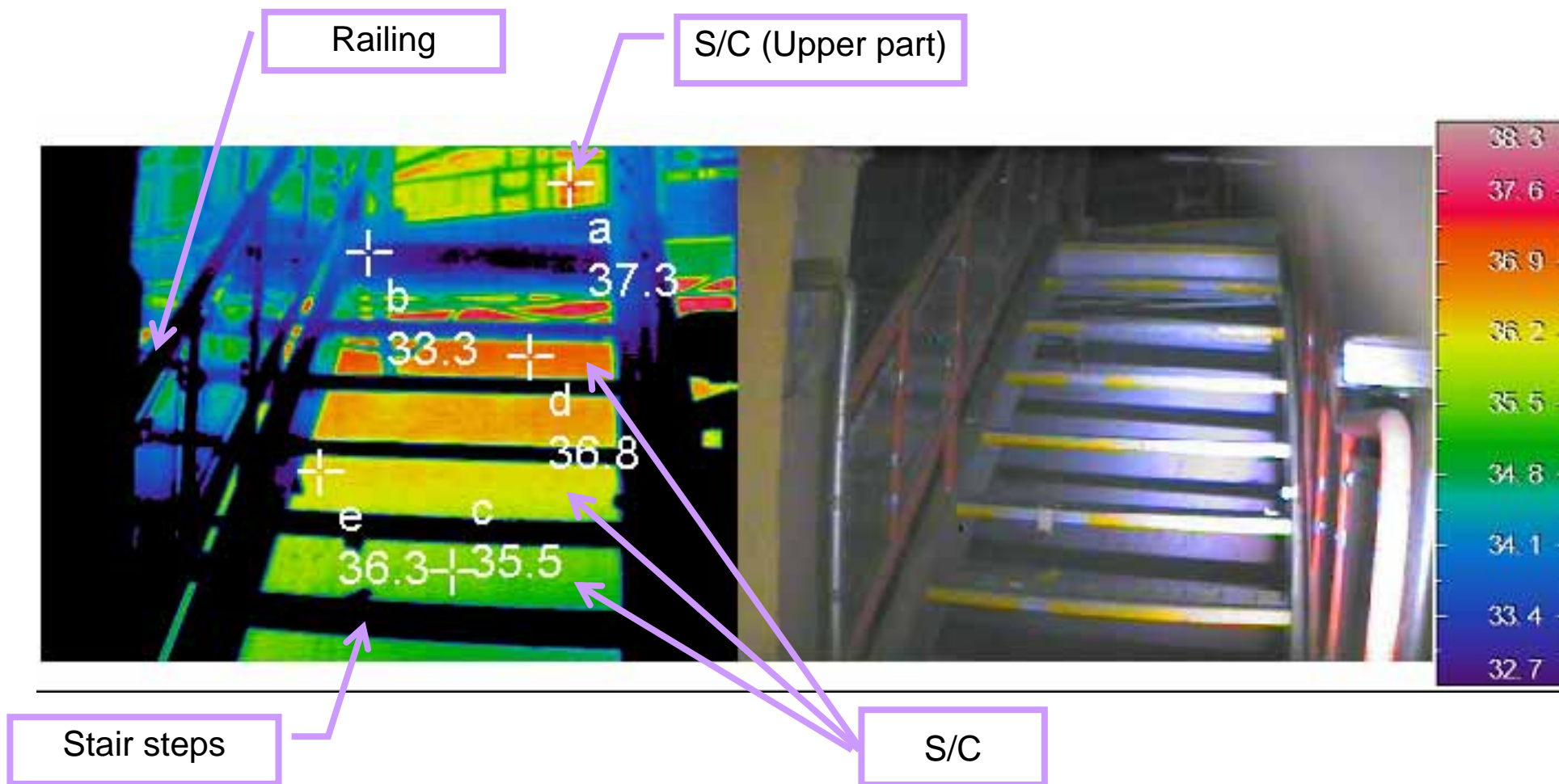


Infrared camera

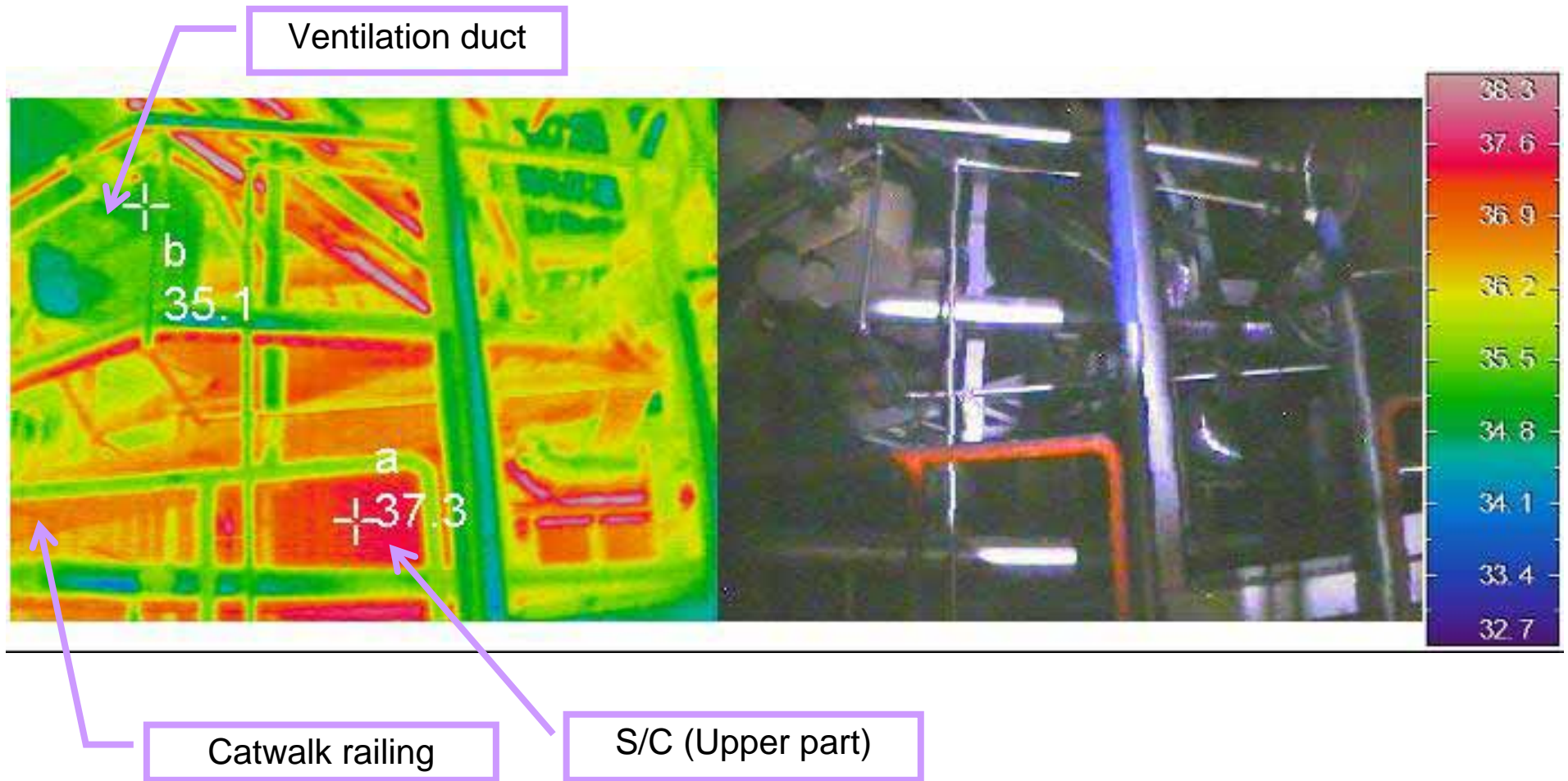
1. Shooting Conditions



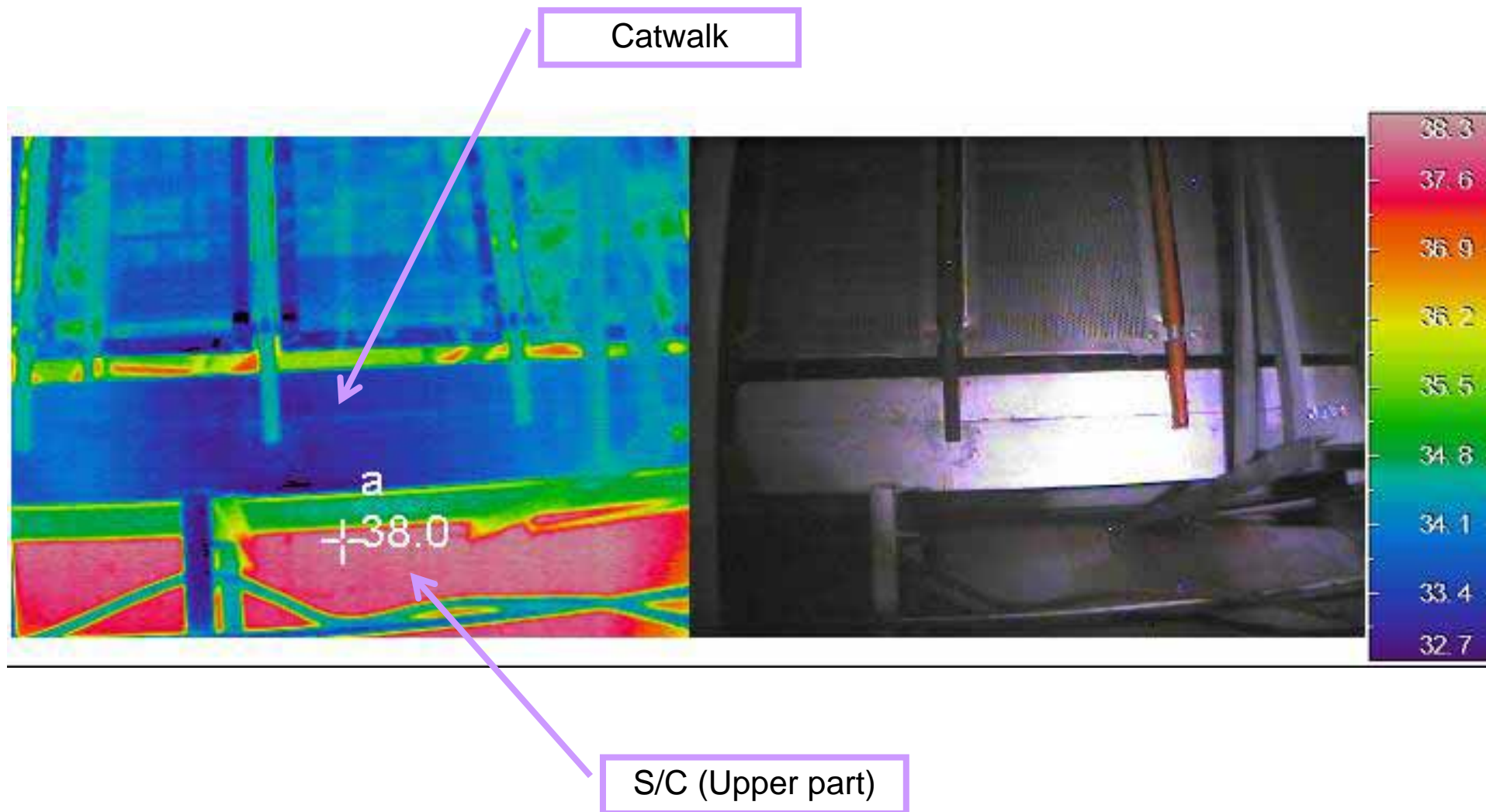
2. Measurement Result -1



2. Measurement Result -2



2. Measurement Result -3



- 1. The water level in S/C (the border surface between the liquid phase and the gaseous phase) could not be confirmed.**
- 2. The temperature was higher in the upper part of S/C (Approx. 38) compared to other areas.**
- 3. The temperature of S/C upper part was higher compared to the Torus Room temperature (Approx. 35).**