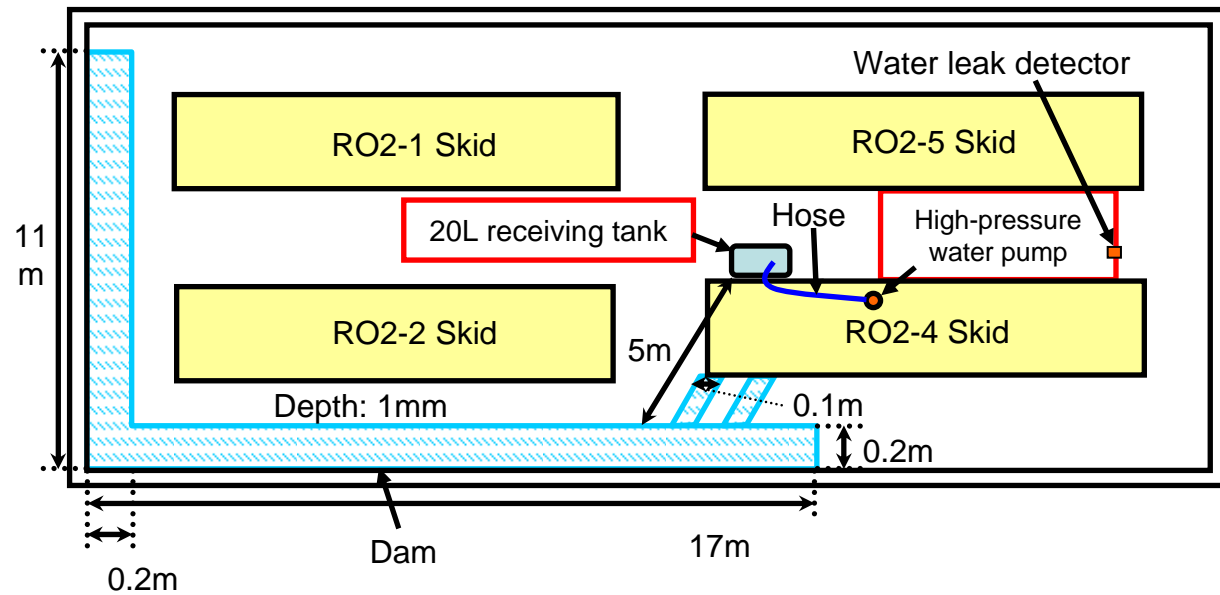


Water Overflow from the Plastic Container near Desalination System (Reverse Osmosis Membrane) No.2 at Fukushima Daiichi Nuclear Power Station



Sampling Result of the leaked water at Fukushima Daiichi Nuclear Power Station

Location: At desalination system (reverse osmosis membrane) No.2

Date: Saturday, June 23, 2012

Nuclide	Radioactivity Density (Bq/cm ³)	Half-life
I-131	Below the detection limit (7.0 x 10 ⁻¹)	Approx. 8 days
Cs-134	2.6 x 10 ⁰	Approx. 2 years
Cs-137	3.9 x 10 ⁰	Approx. 30 years
All	9.0 x 10 ⁴	-

As for the nuclides, sampling results of 3 major nuclides are provided. The detection limit is provided in the parentheses.