

An Issue Found with the Minimum Flow Rate Bypass Valve of Unit 5 Reactor Core Spray System (B) at Fukushima Daiichi Nuclear Power Station

Date and Time: October 10, 2012 at around 10:37 AM

Issue: One of the two valving elements of the minimum flow rate bypass valve of Unit 5 reactor core spray system (B) was found to be removed during a disassembly inspection.

Outline:

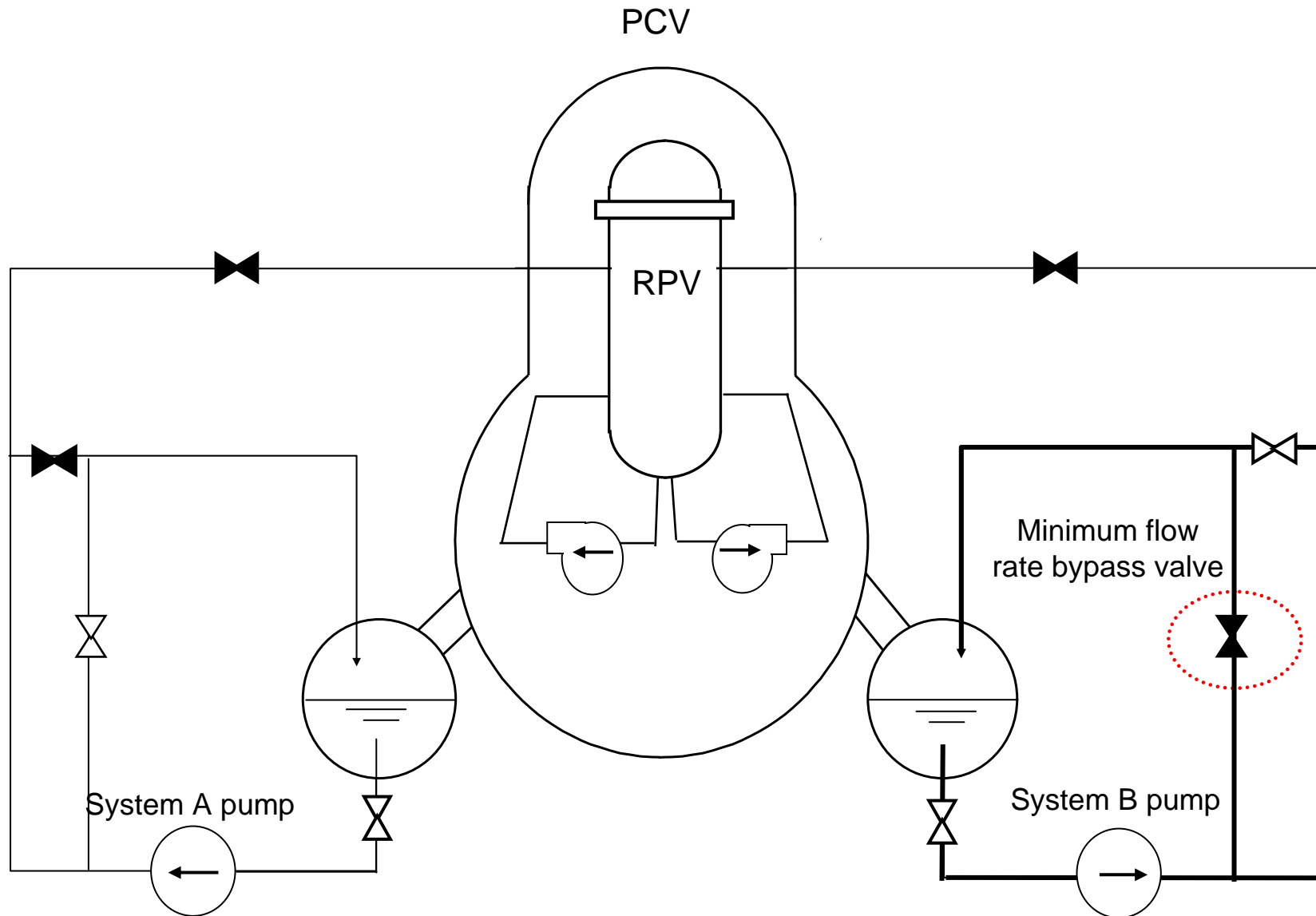
July 18, 2012

At a regular inspection of the reactor core spray system (B), the minimum flow rate bypass valve did not close all the way when it should have. However, the system flow rate fulfilled the requirement stipulated by the technical specification.

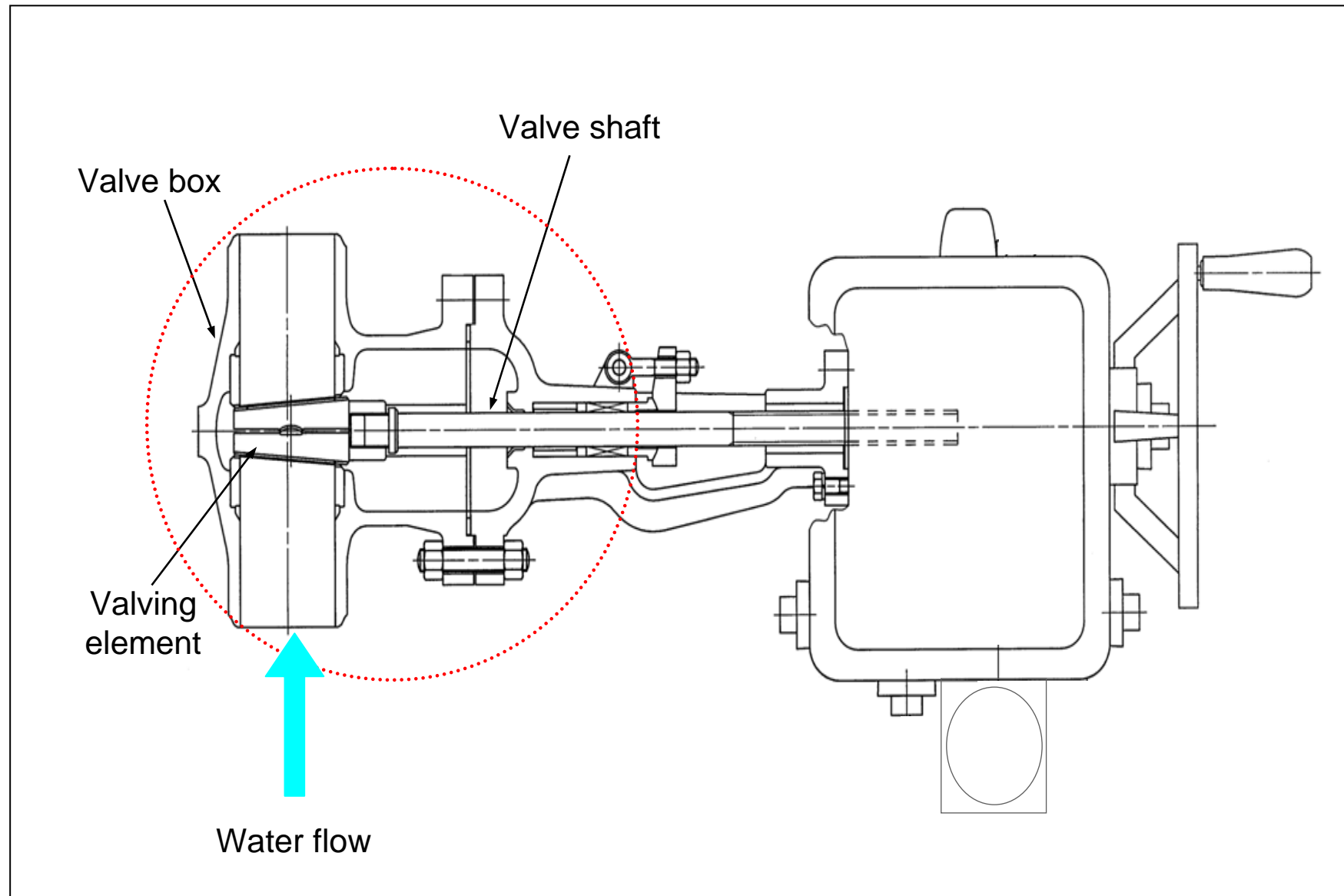
October 10, 2012

One of the two valving elements (on the inlet side) of the minimum flow rate bypass valve was found to be removed.

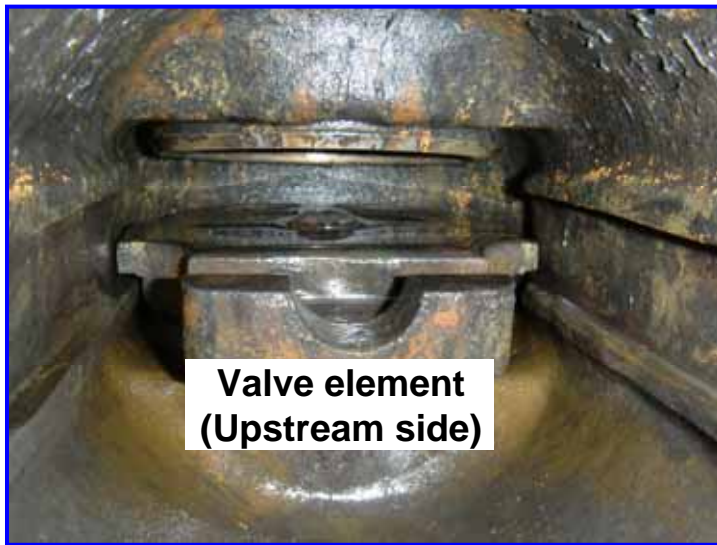
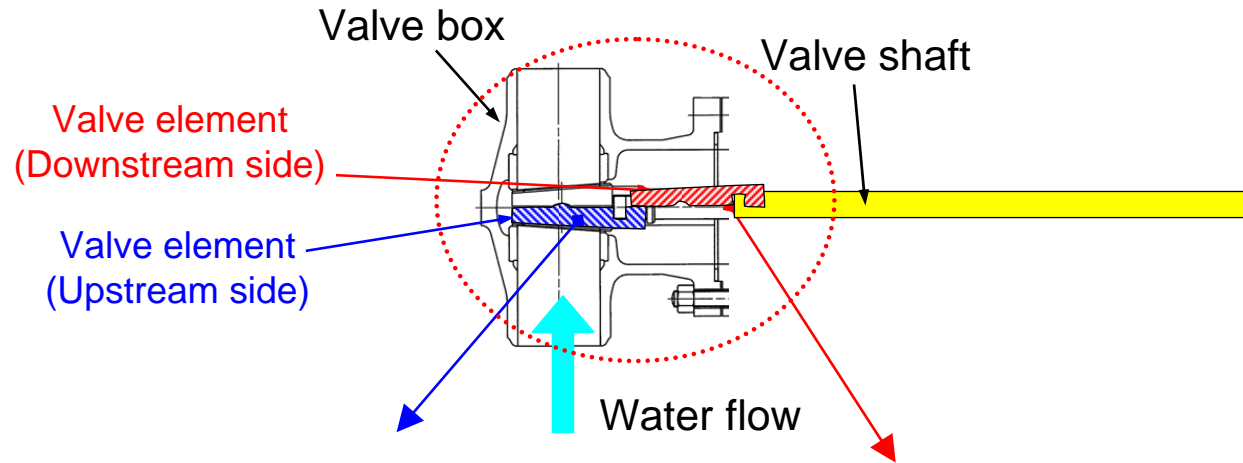
Unit 5 Reactor Core Spray System



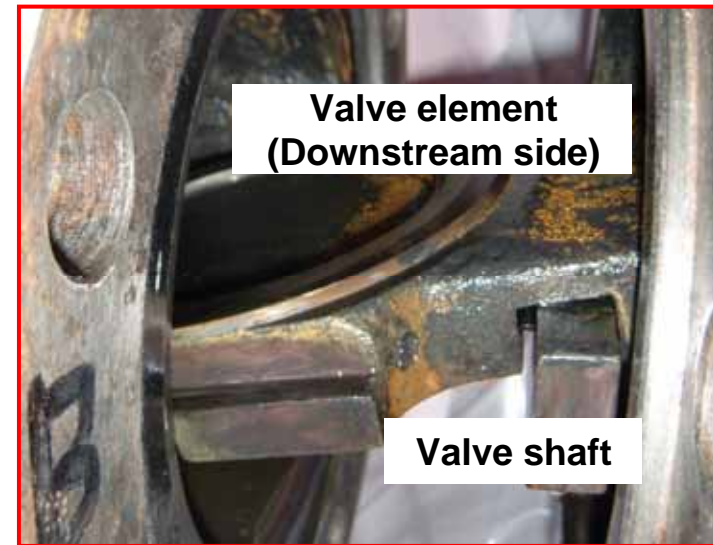
Structure of the Minimum Flow Rate Bypass Valve



Condition of the valve at the time of the inspection



Valve element in the valve box which came off of the valve shaft (Upstream side)



Connection between the valve element (downstream side) and the valve shaft when the valve was disassembled