

General Outline of “CHAdEMO Association”



1. What is “CHAdEMO”?

“CHAdEMO” is a trade name of quick charging method that this Association is proposing globally as an industry standard.

"CHAdEMO" is an abbreviation of “CHArge de MOve”, equivalent to “charge for moving”, and is a pun for “O cha demo ikaga desuka” in Japanese, meaning “Let’s have a tea while charging” in English.



CHAdEMO

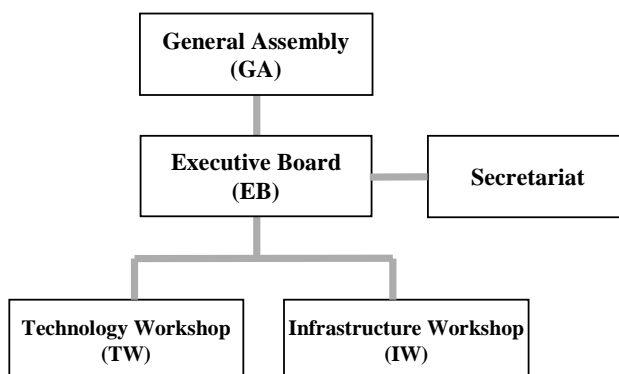
This logo means smiles which associate a bright future and happiness with a combination of the circuit symbol of battery  representing “Charge”, and a dynamic curving line  representing “Move”.

This ecological green is the color of “Green Tea”.

2. Structure of the Association

President: Tsunehisa Katsumata

(Chairman, THE TOKYO ELECTRIC POWER CO., INC.)



Meeting	Meeting Frequency	Activity
General Assembly(GA)	Once/ fiscal year	- Approval of action plan and activity report including fiscal report
Executive Board(EB)	As needed	- Decision of matters related to management and operation of the Association
Technology Workshop(TW)	As needed	- Certification work of quick chargers compatible with CHAdeMO Protocol - Revision of standard specifications - Involvement for international standardization activities through representative body of each country
Infrastructure Workshop(IW)	As needed	- Sharing information regarding installation and maintenance of quick chargers among Members - Reviewing and sharing information regarding development and installation of normal/quick charging infrastructure

3. Member classes and roles

Member Class	Roles	Participable Meeting			
		GA	EB	TW	IW
Executive Members	Members managing operation of this Association	<input type="checkbox"/>	<input type="checkbox"/>	<input type="checkbox"/>	<input type="checkbox"/>
Regular Members	Members consisting of automakers and charger manufacturers, that develop and manufacture products compatible with CHAdeMO Protocol	<input type="checkbox"/>		<input type="checkbox"/>	<input type="checkbox"/>
Supporting Members	Members supporting this Association's prospectus and cooperating in expediting the installation of charging infrastructure	<input type="checkbox"/>			<input type="checkbox"/>
Observers	Entities like central or local government bodies or other organizations supporting the Association's activities	*			<input type="checkbox"/>

*: no voting rights