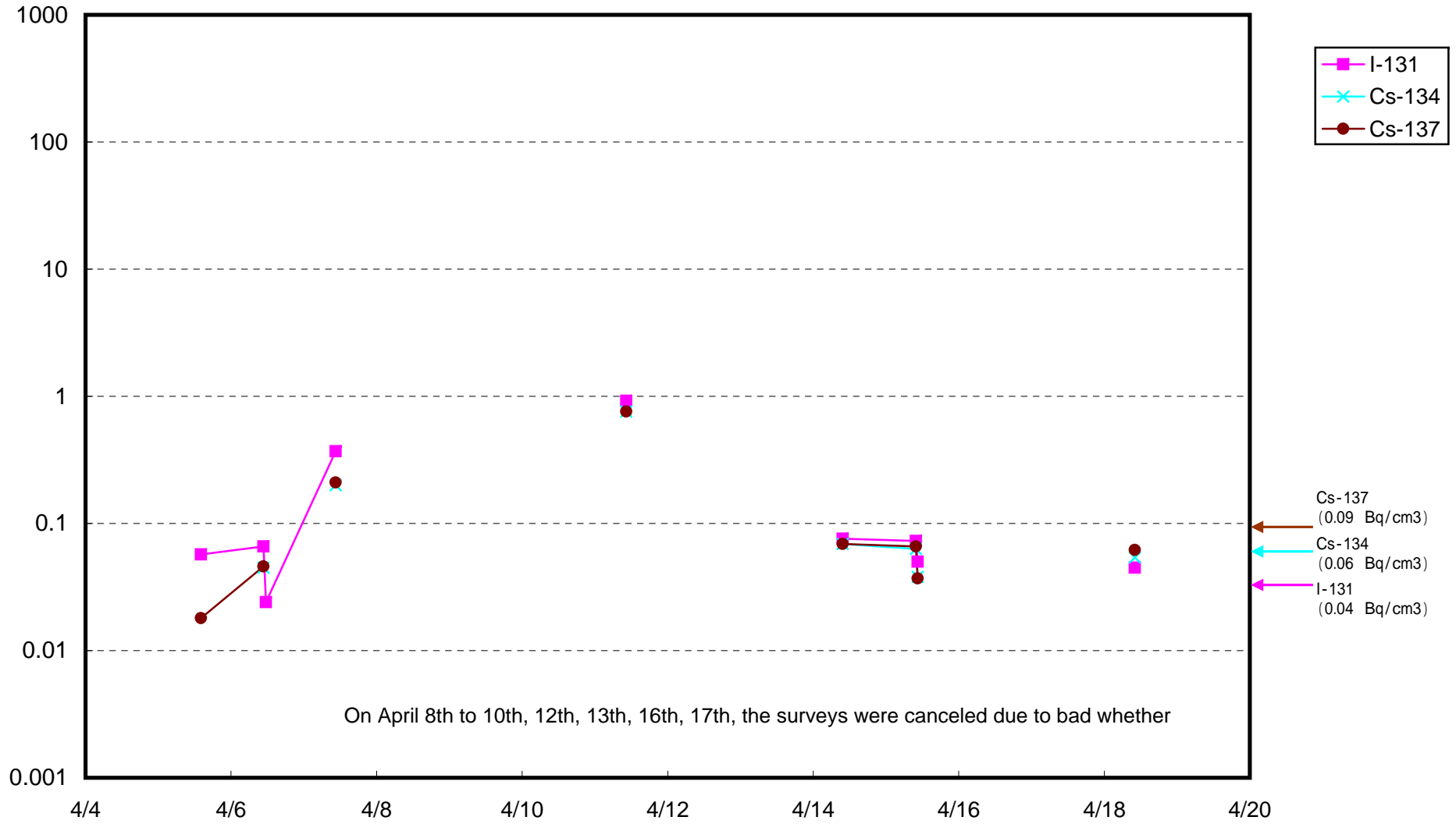
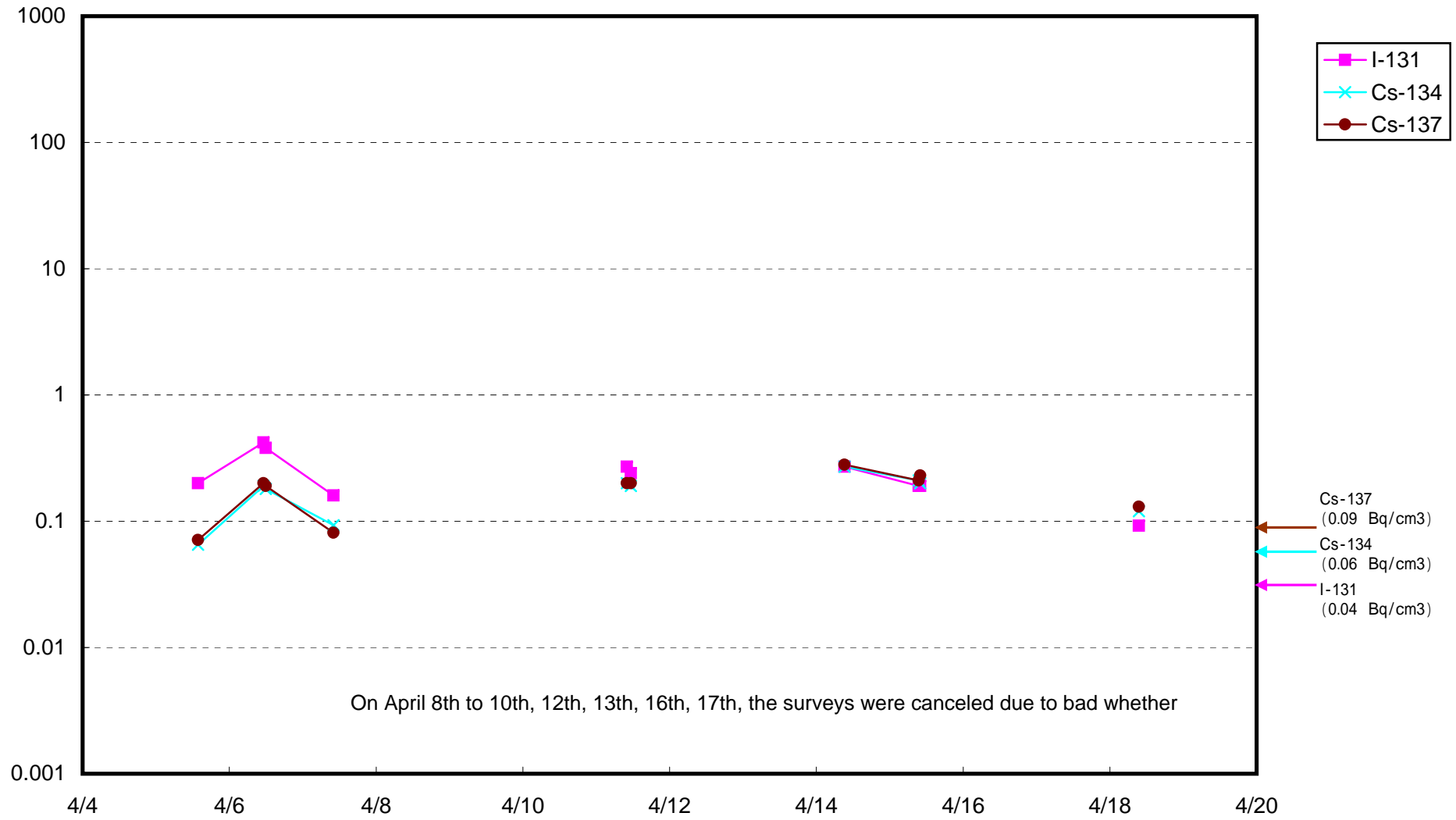


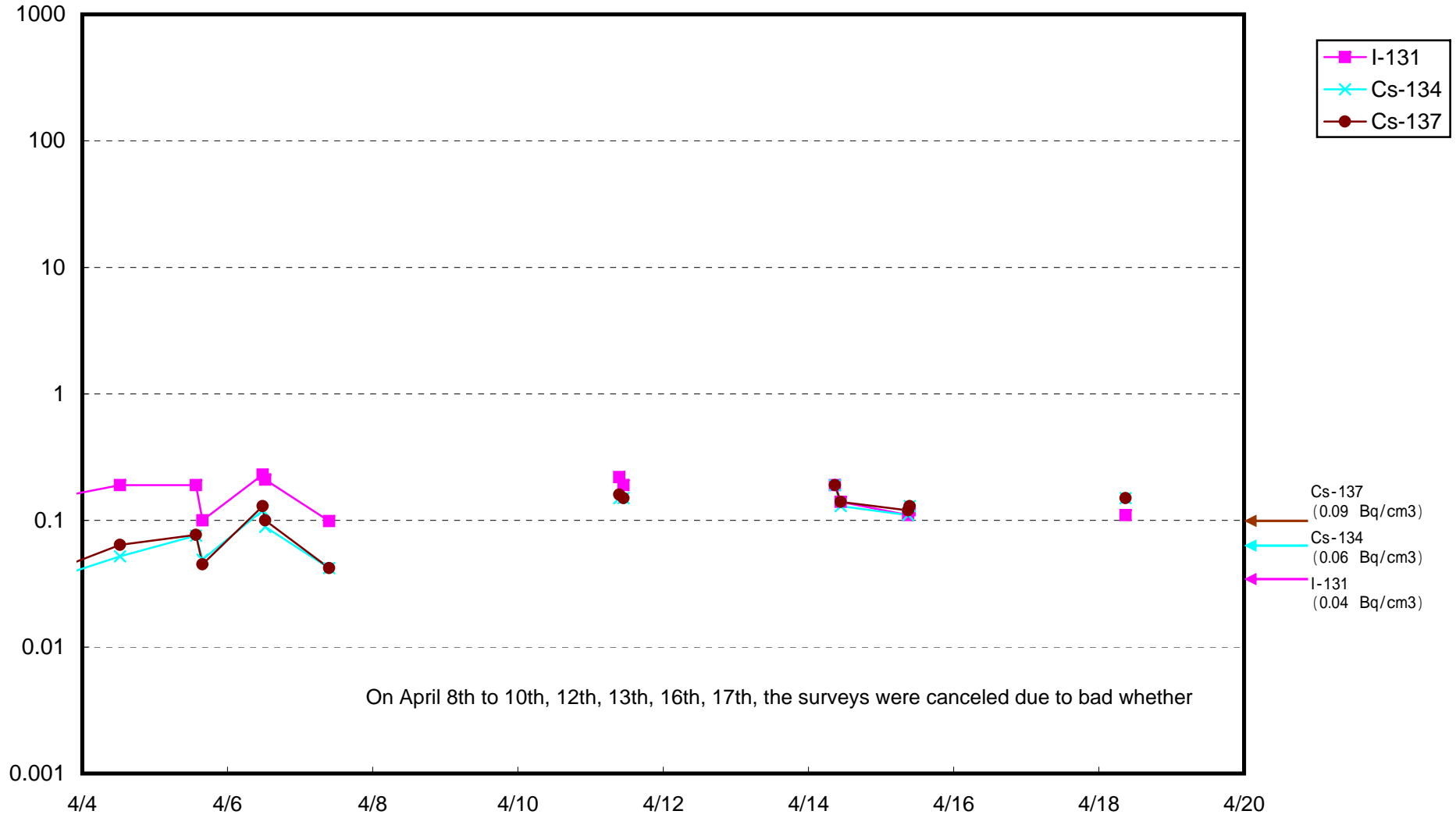
Radioactivity Density of Seawater at 15km off the coast of Minamisoma City ( B q / c m 3 )



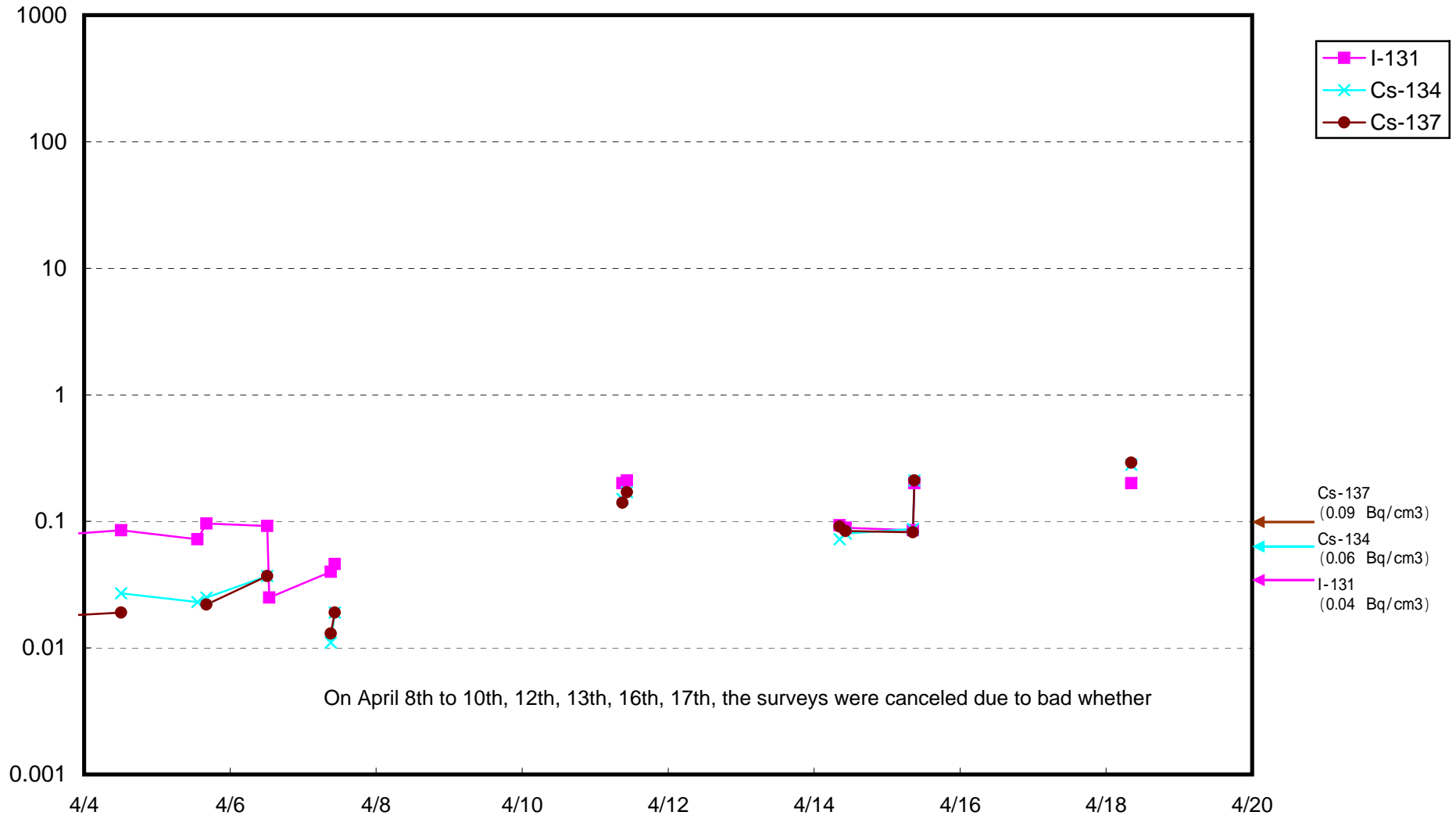
Radioactivity Density of Seawater at 5km off the coast of Ukedo river ( B q / c m 3 )



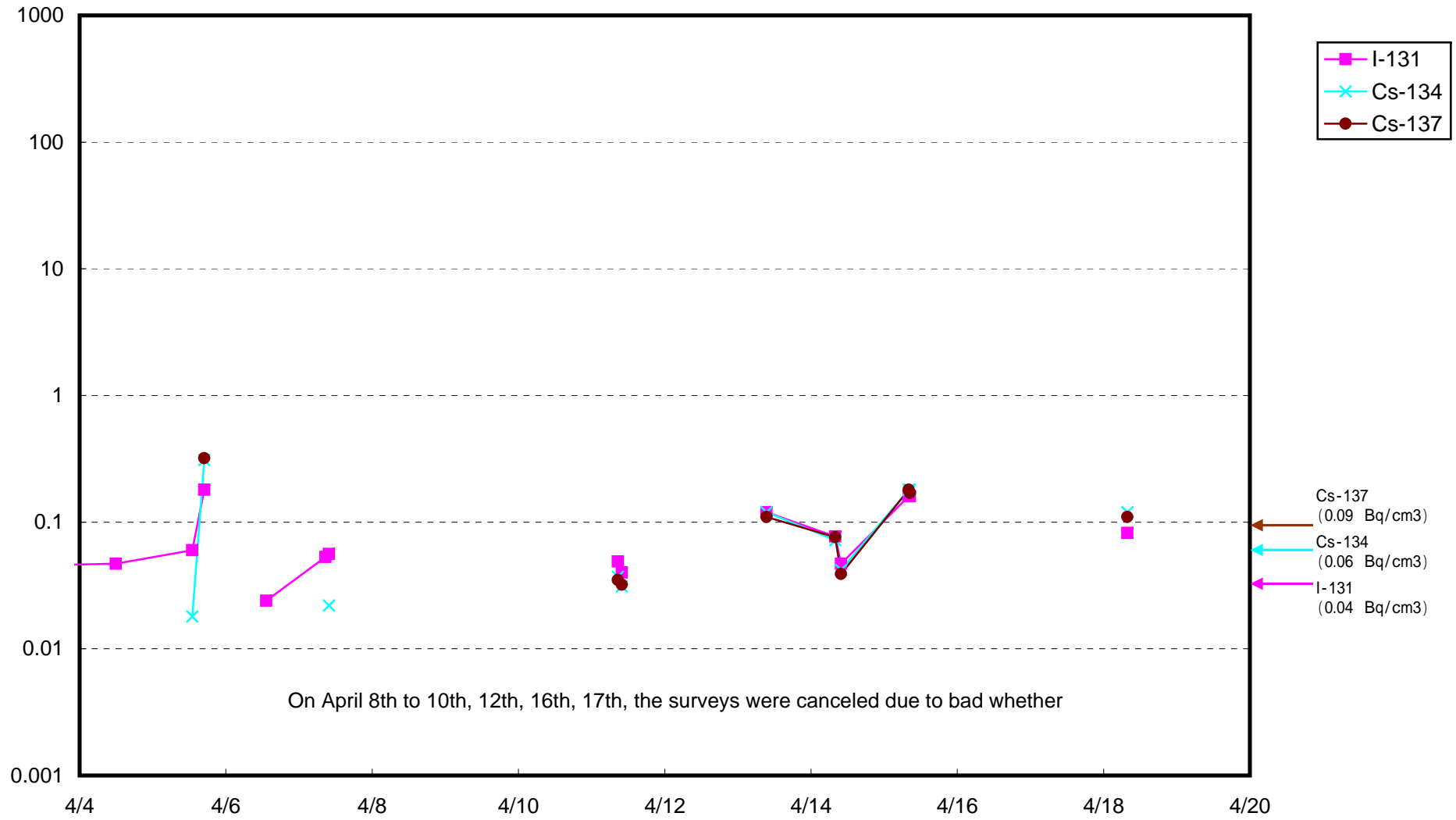
Radioactivity Density of Seawater at 15km off the coast of Fukushima Daiichi ( Bq / cm<sup>3</sup> )



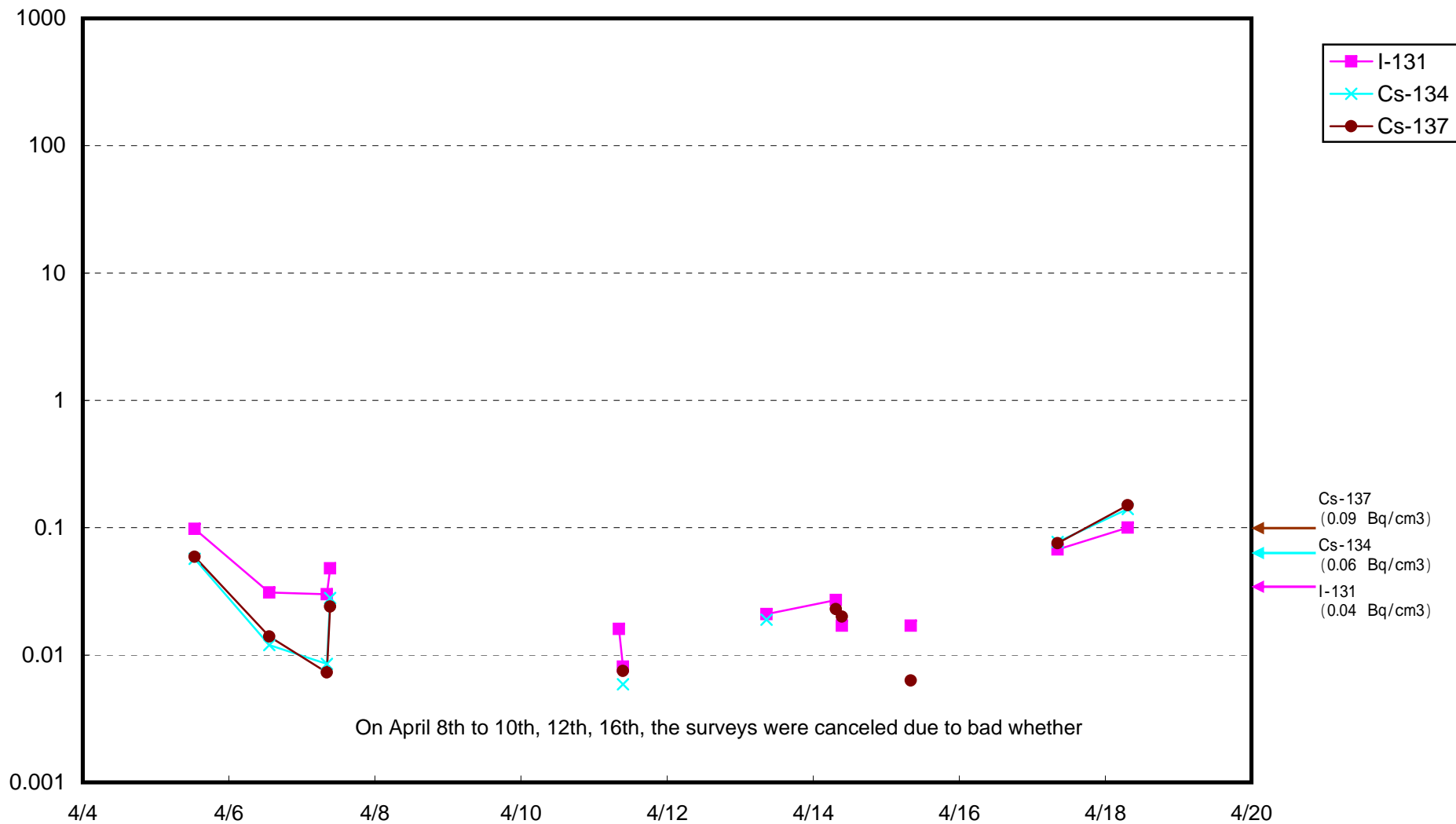
Radioactivity Density of Seawater at 15km off the coast of Fukushima Daini ( B q / c m 3 )



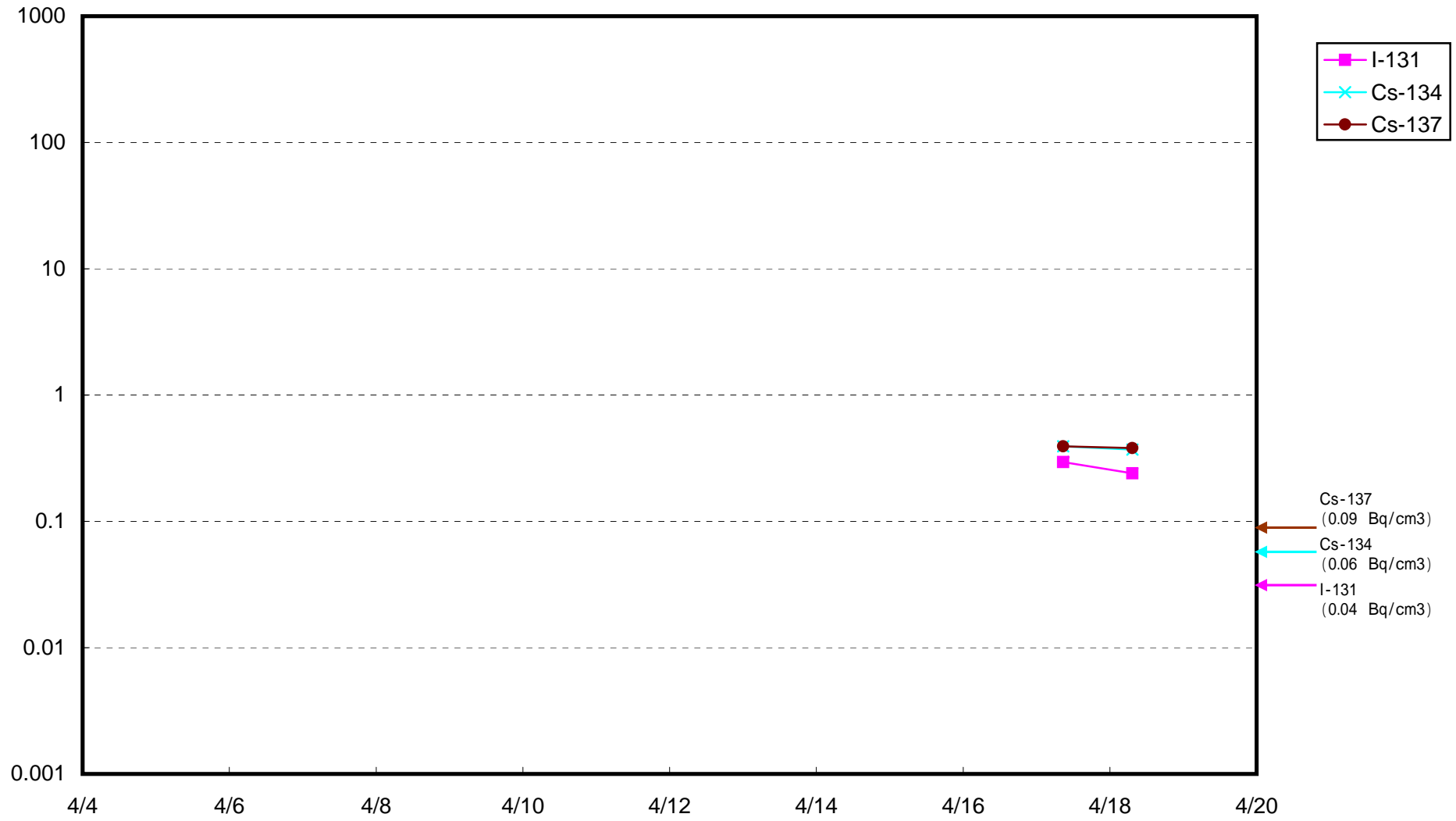
Radioactivity Density of Seawater at 15km off the coast of Iwasawa Seashore ( B q / c m 3 )



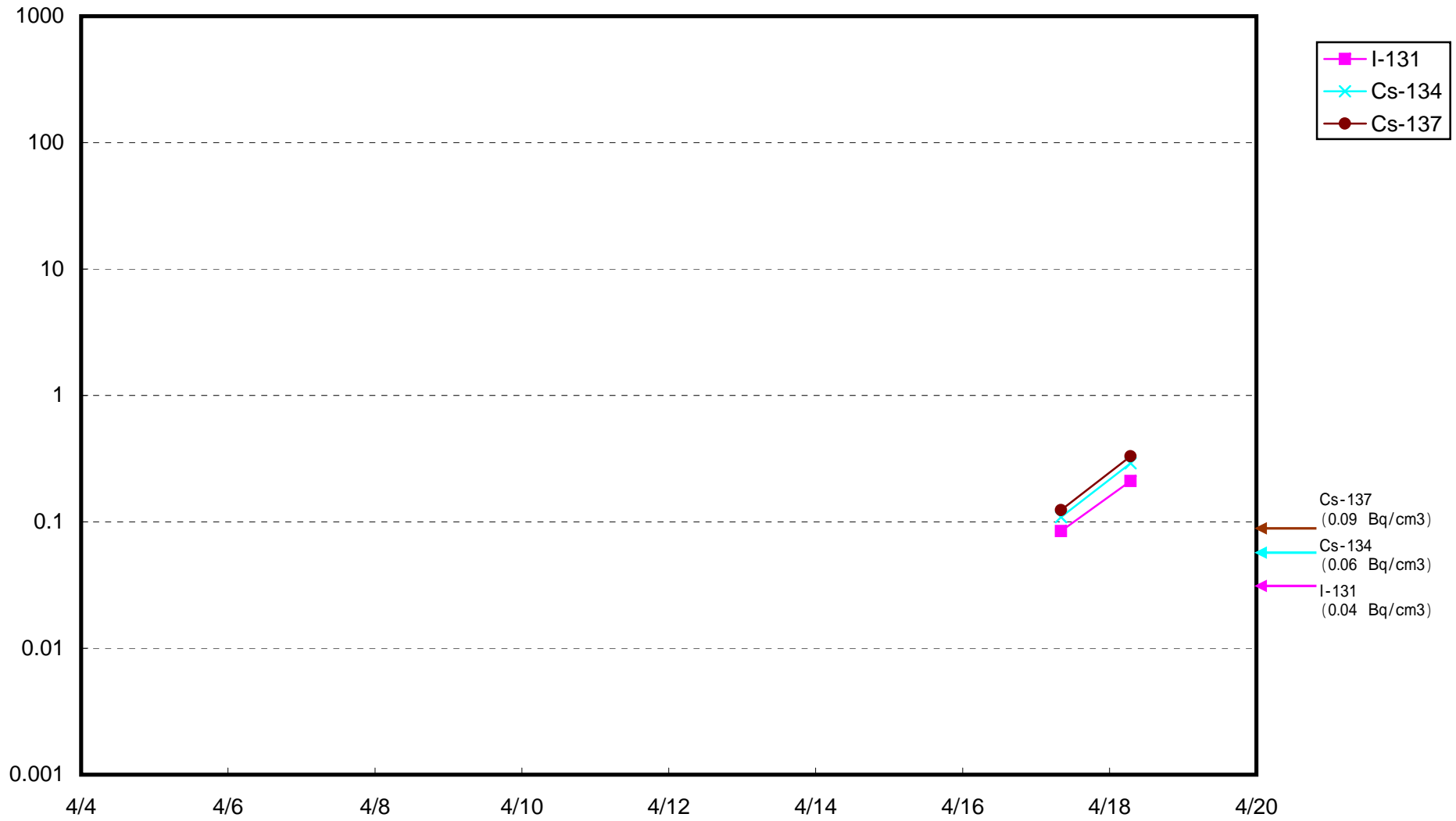
Radioactivity Density of Seawater at 15km off the coast of Hirono Town ( B q / c m 3 )



Radioactivity Density of Seawater at 3km off the coast of Iwasawa Seashore( B q / c m 3 )



Radioactivity Density of Seawater at 3km off the coast of Northern side of Iwaki city ( B q / c m 3 )





Radioactivity Density of Seawater at 8km off the coast of Iwasawa Seashore( B q / c m 3 )

