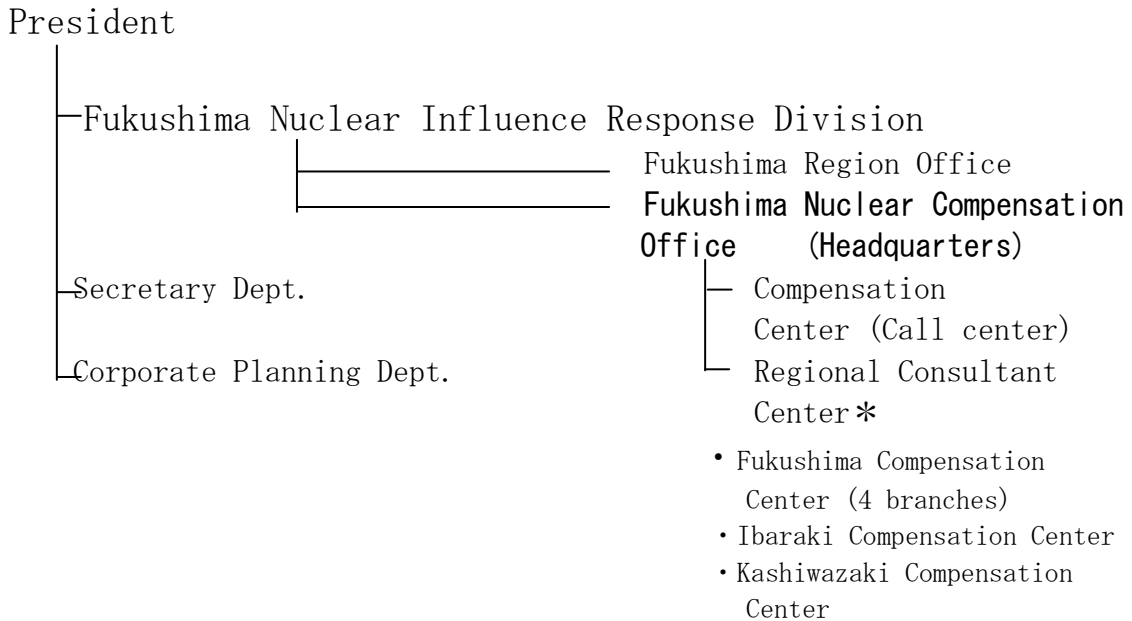
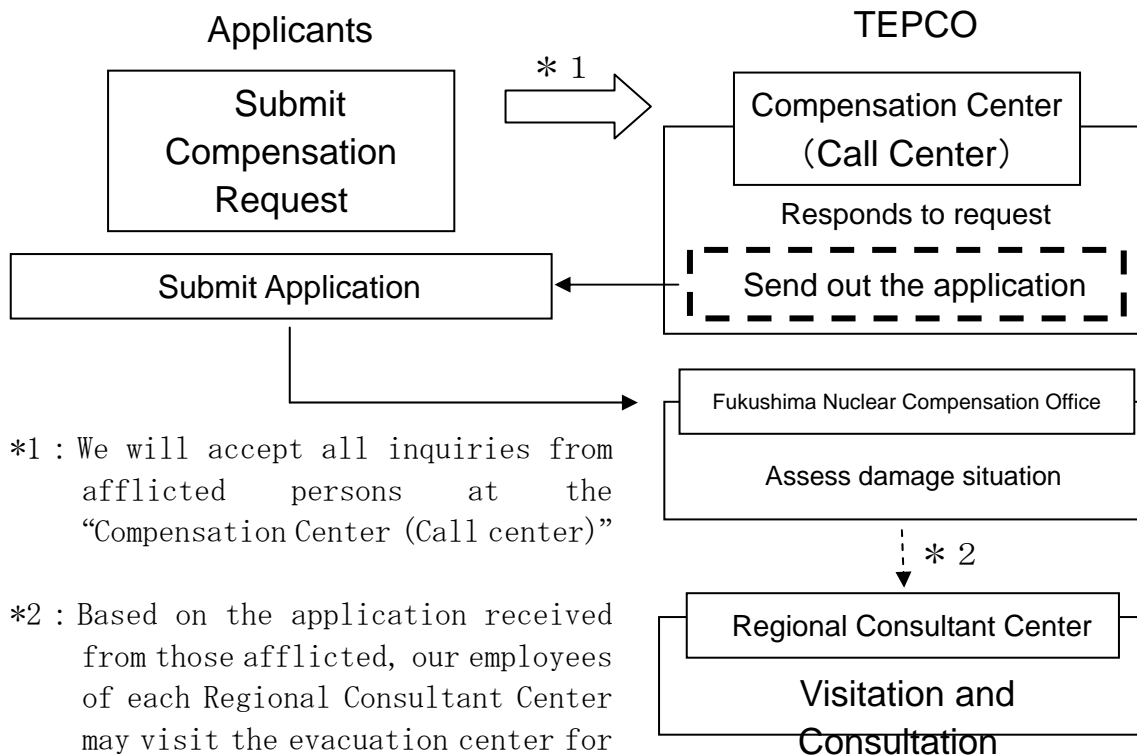


<New Organization>



* We plan to establish Compensation Centers in Tochigi, Gunma, Saitama, Tokyo, Chiba and Kanagawa by the middle of May.

<Flow of compensation consultant>



*1 : We will accept all inquiries from afflicted persons at the “Compensation Center (Call center)”

*2 : Based on the application received from those afflicted, our employees of each Regional Consultant Center may visit the evacuation center for consultation.

END