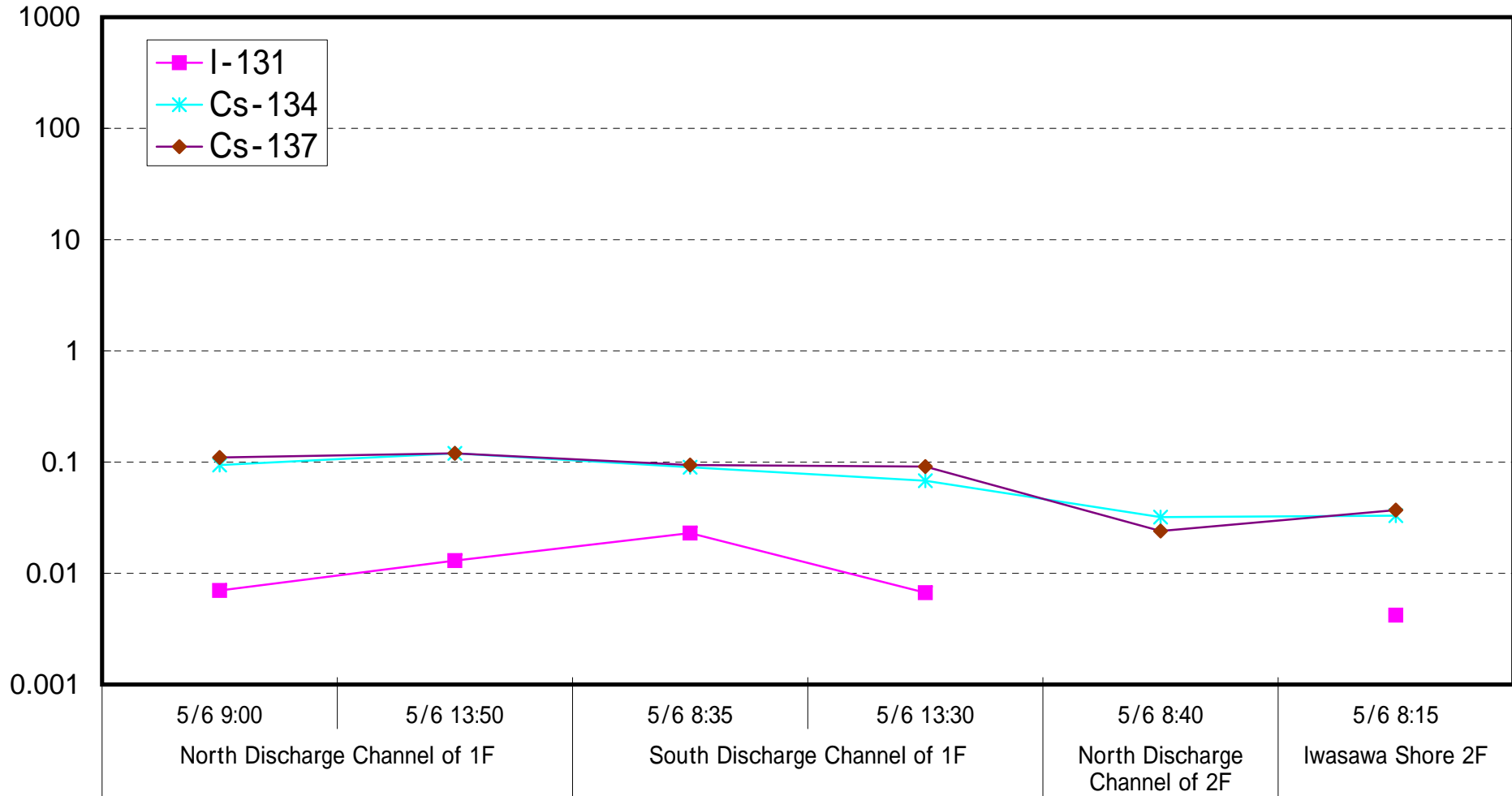
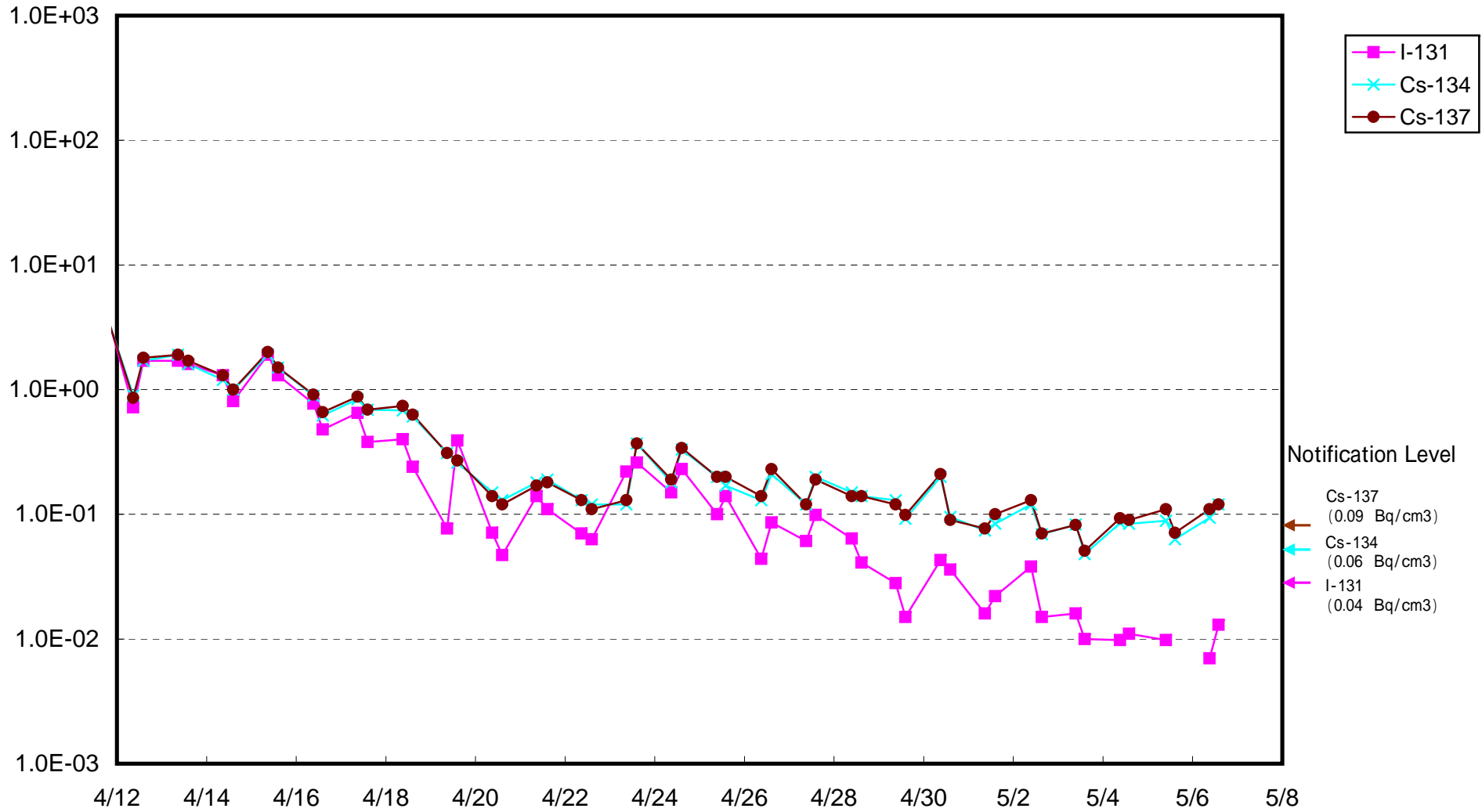


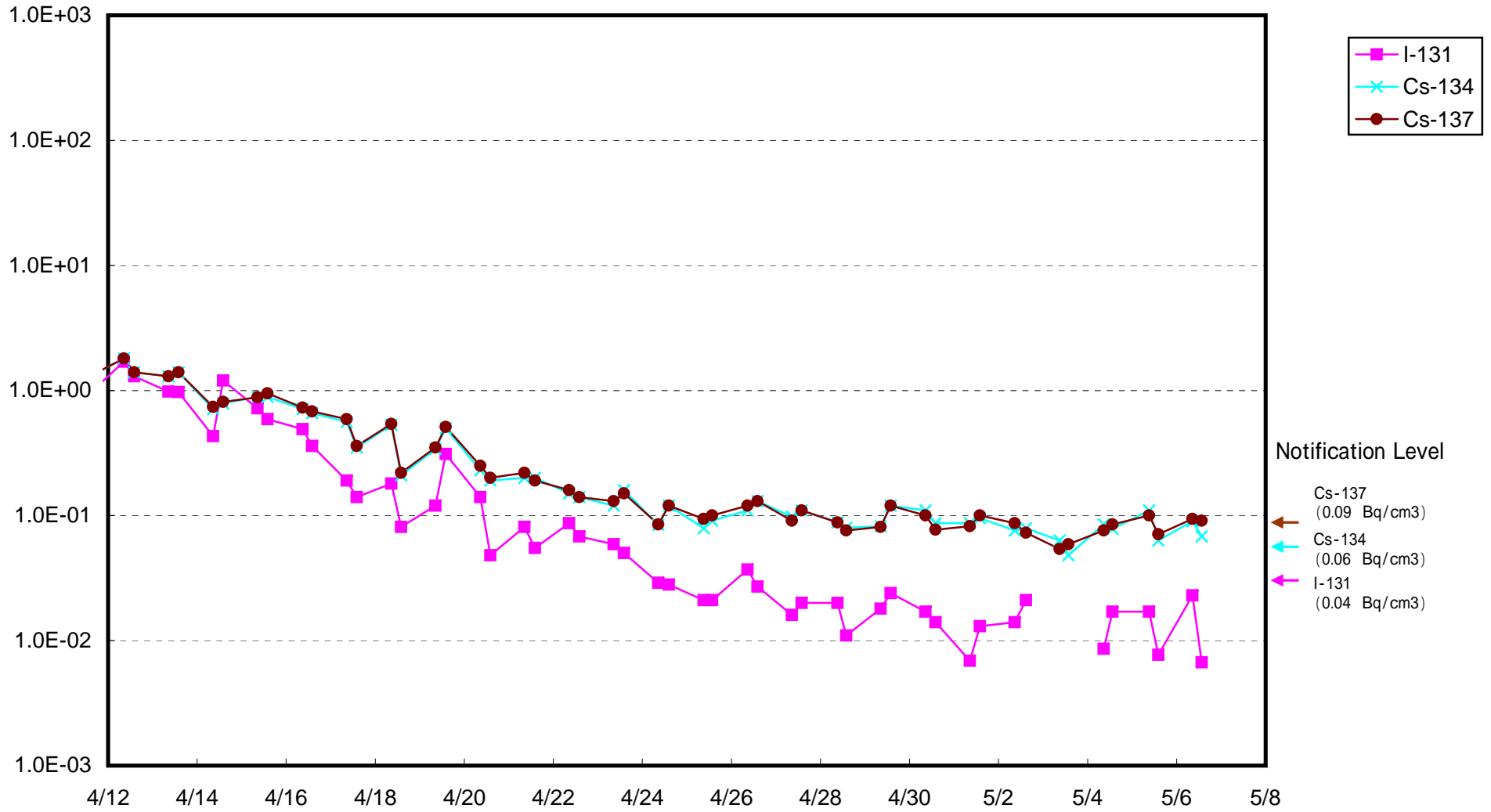
Radioactive Density of Seawater (Bq/cm<sup>3</sup>)



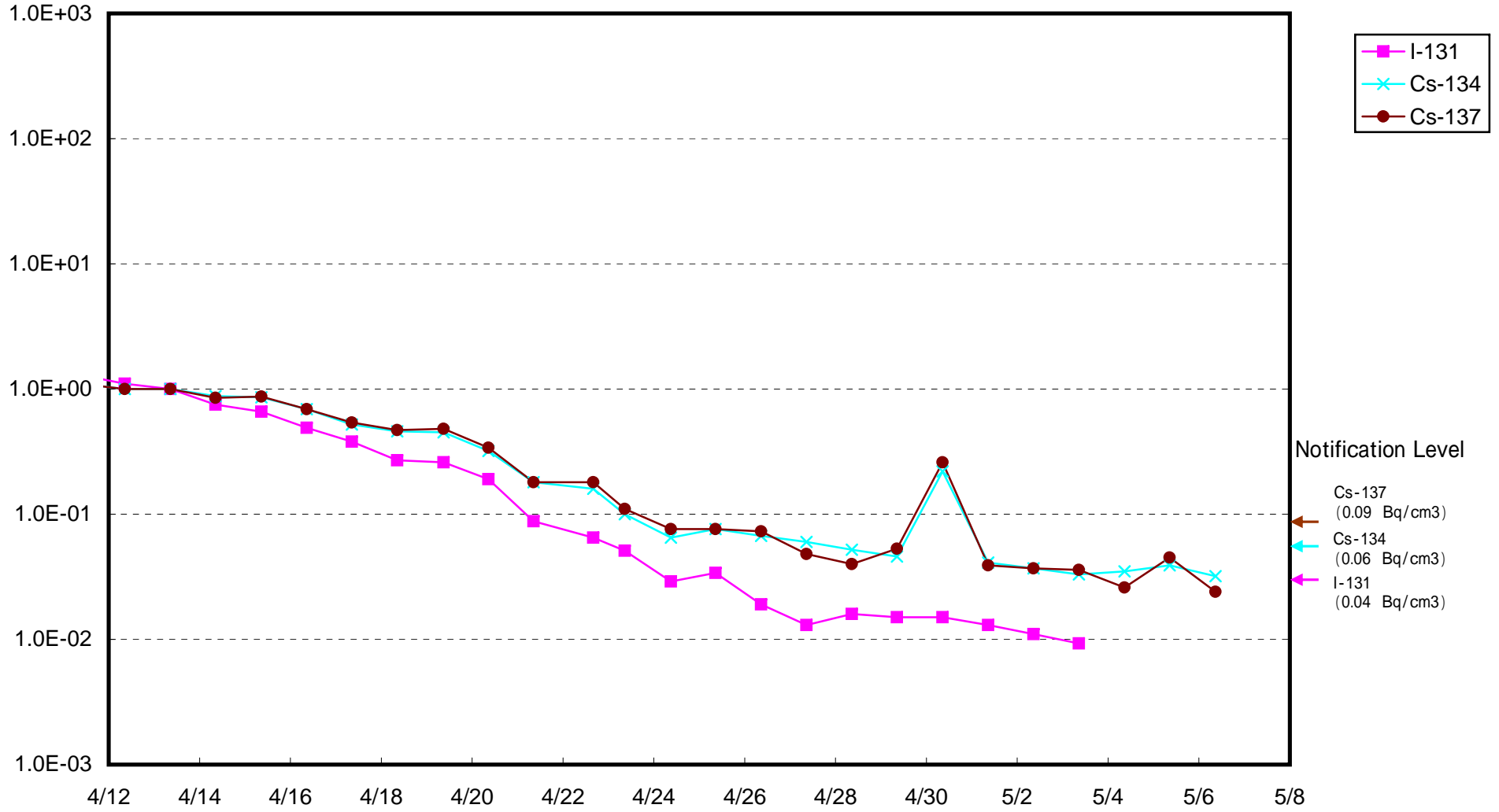
Radioactivity Density of Seawater at North of 1F5-6 Discharge Channel (approx.30m north of 5-6 discharge channel)  
(Bq/cm<sup>3</sup>)



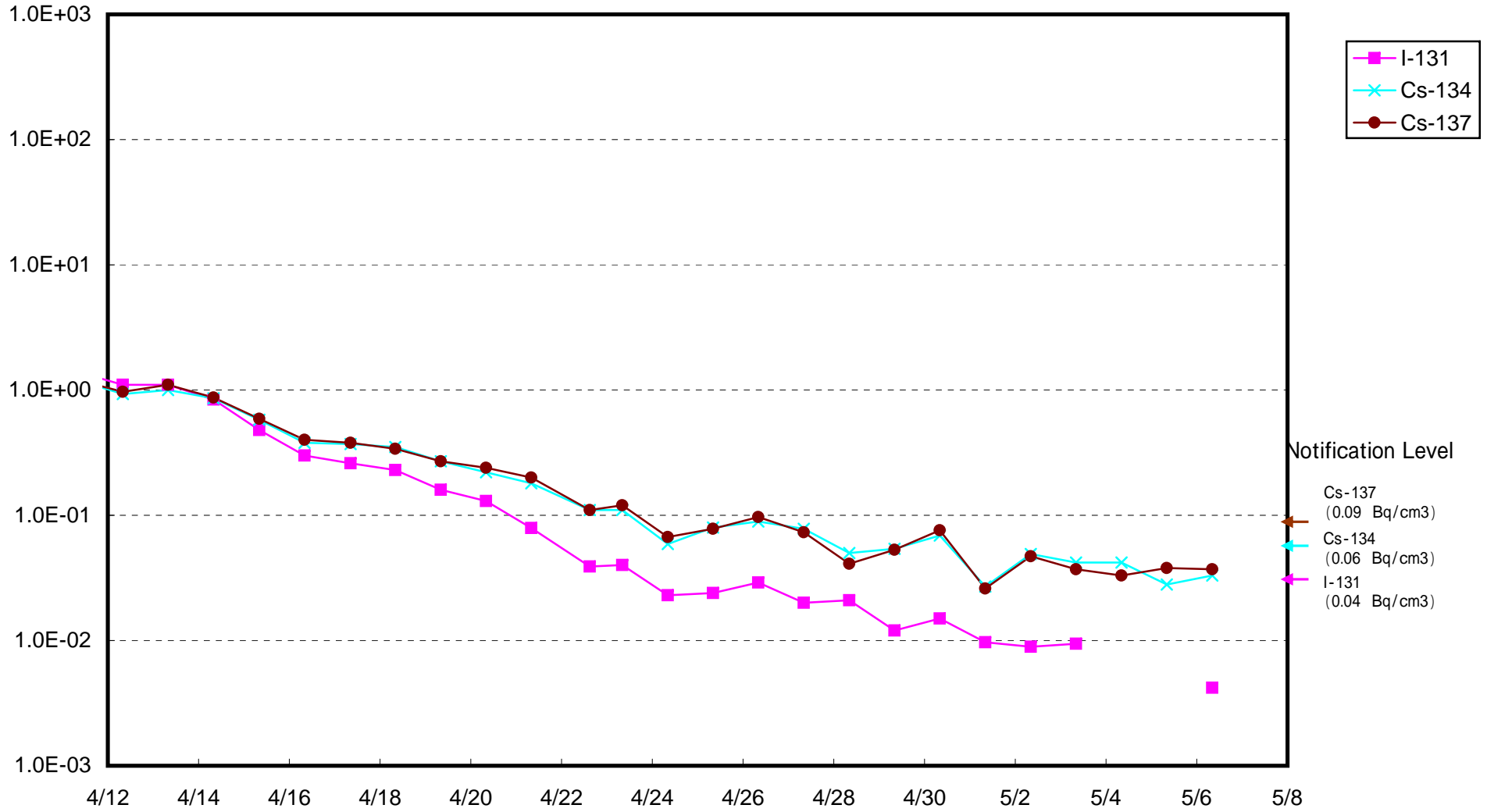
Radioactivity Density of Seawater at South Discharge Channel of 1F (Bq/cm<sup>3</sup>)



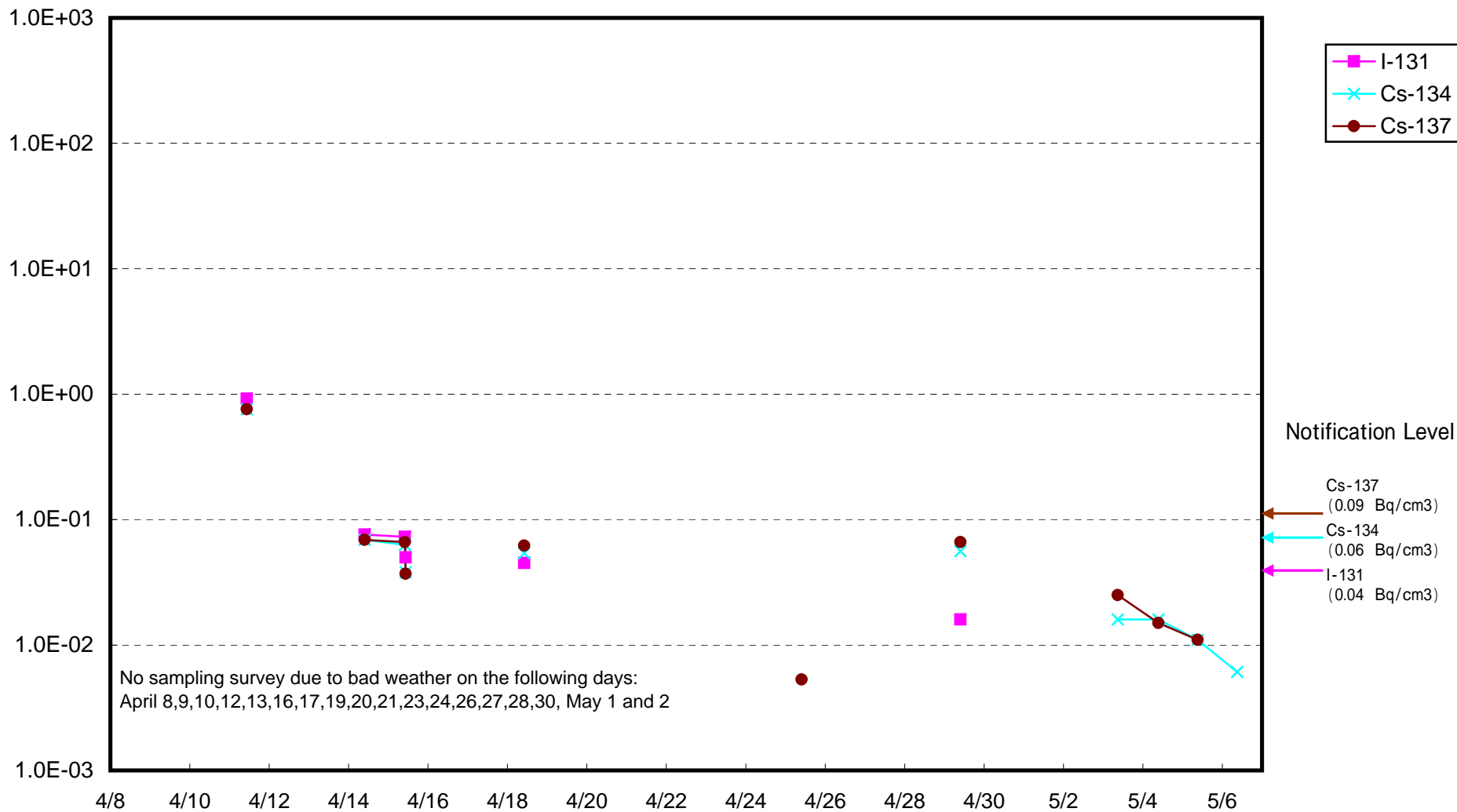
Radioactivity Density of Seawater at North Discharge Channel of 2F (Bq/cm<sup>3</sup>)



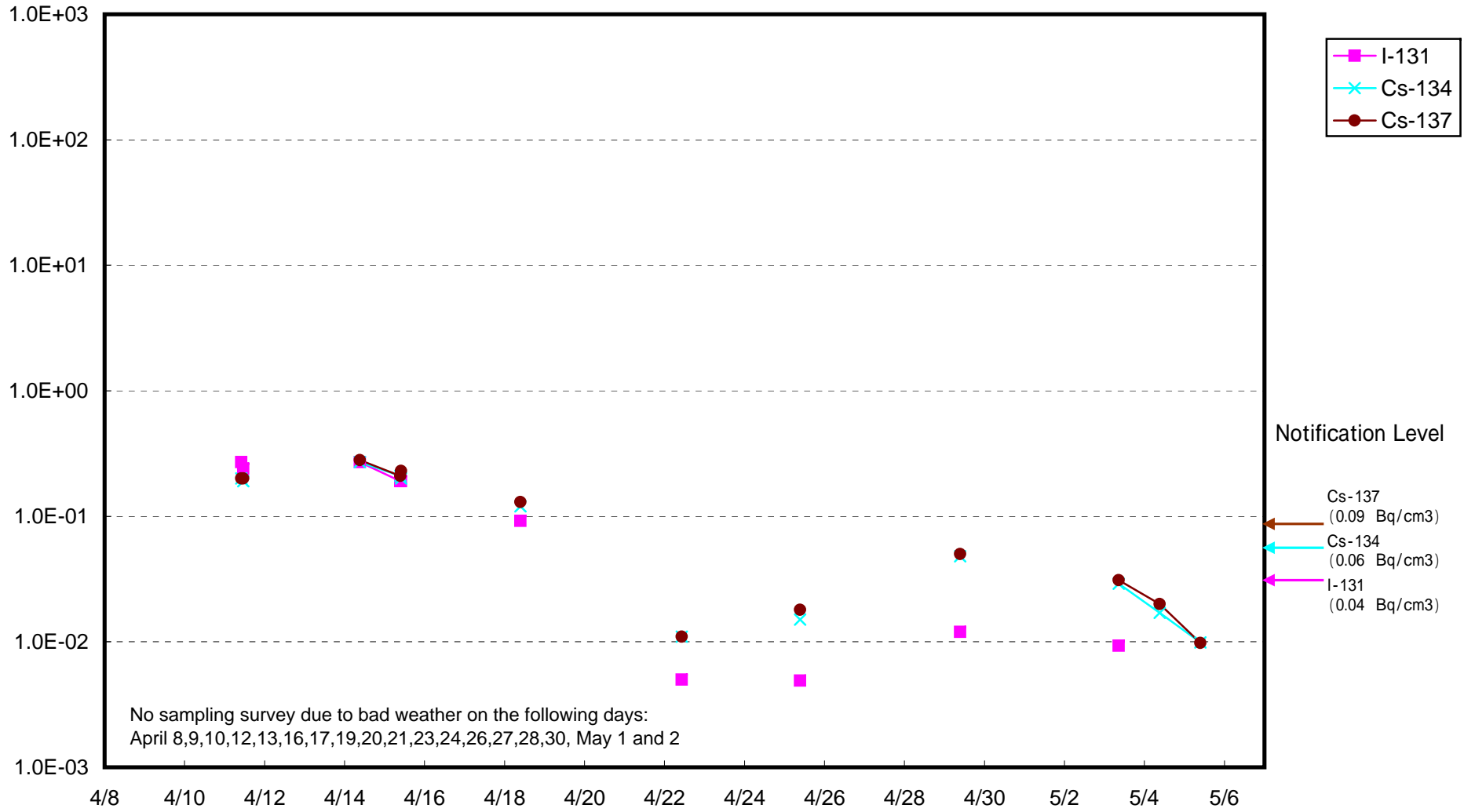
Radioactivity Density of Seawater at Iwasawa Shore 2F (Bq/cm<sup>3</sup>)



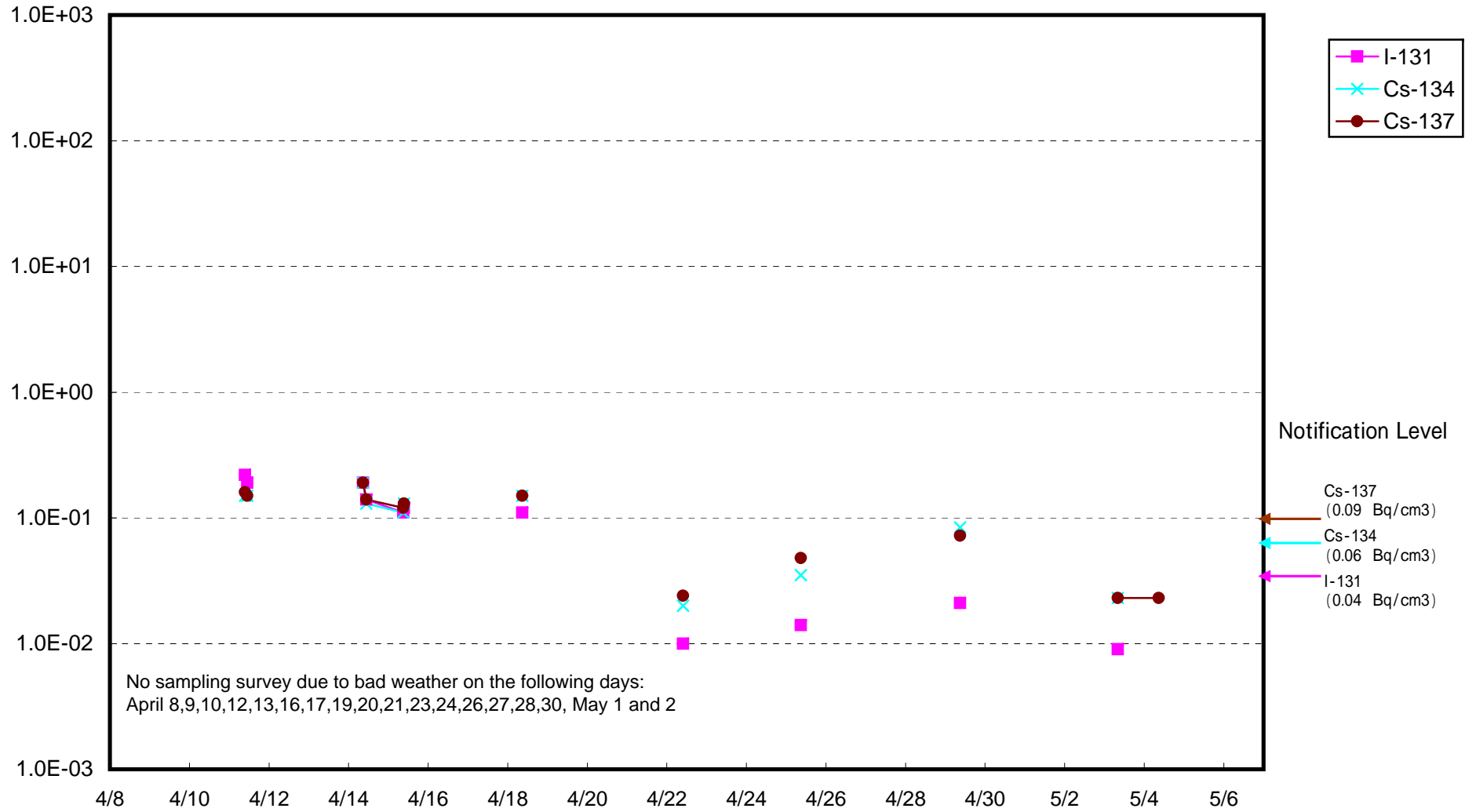
Radioactivity Density of Seawater around approx. 15 km offshore of Minamisouma City (Bq/cm<sup>3</sup>)



Radioactivity Density of Seawater around approx. 15 km offshore of Ukedo-gawa (Bq/cm<sup>3</sup>)

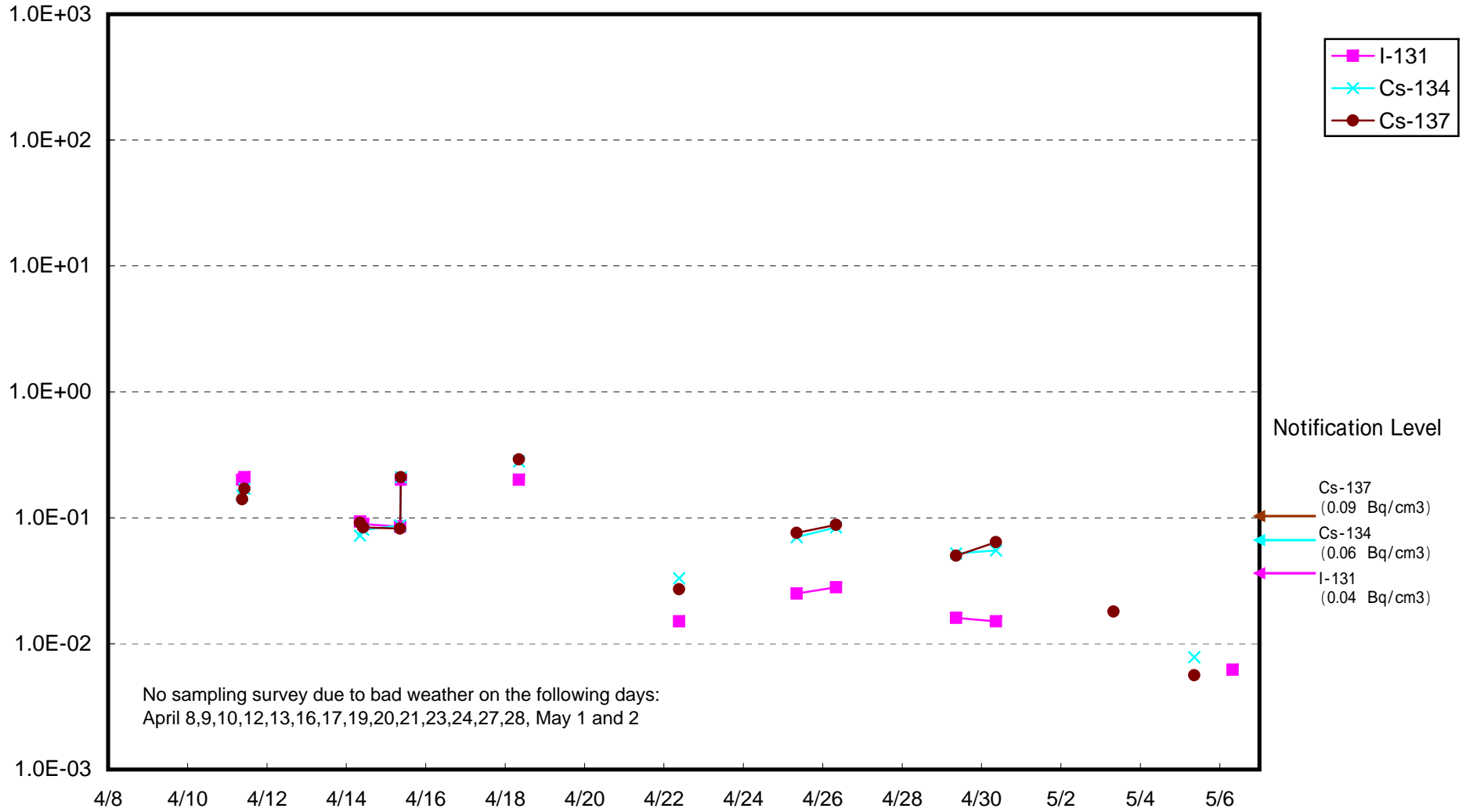


Radioactivity Density of Seawater around approx. 15 km offshore of Fukushima Daiichi (Bq/cm<sup>3</sup>)

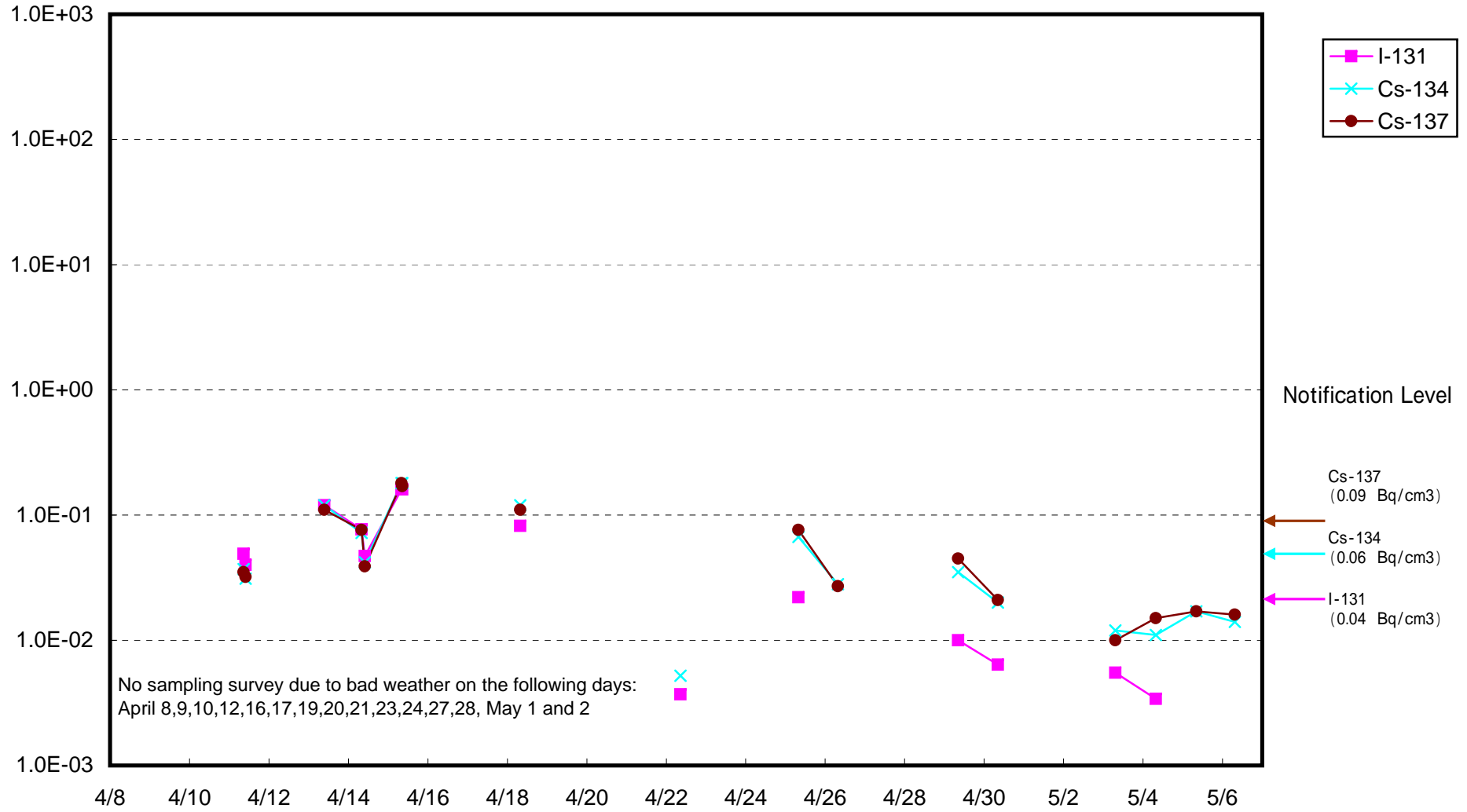




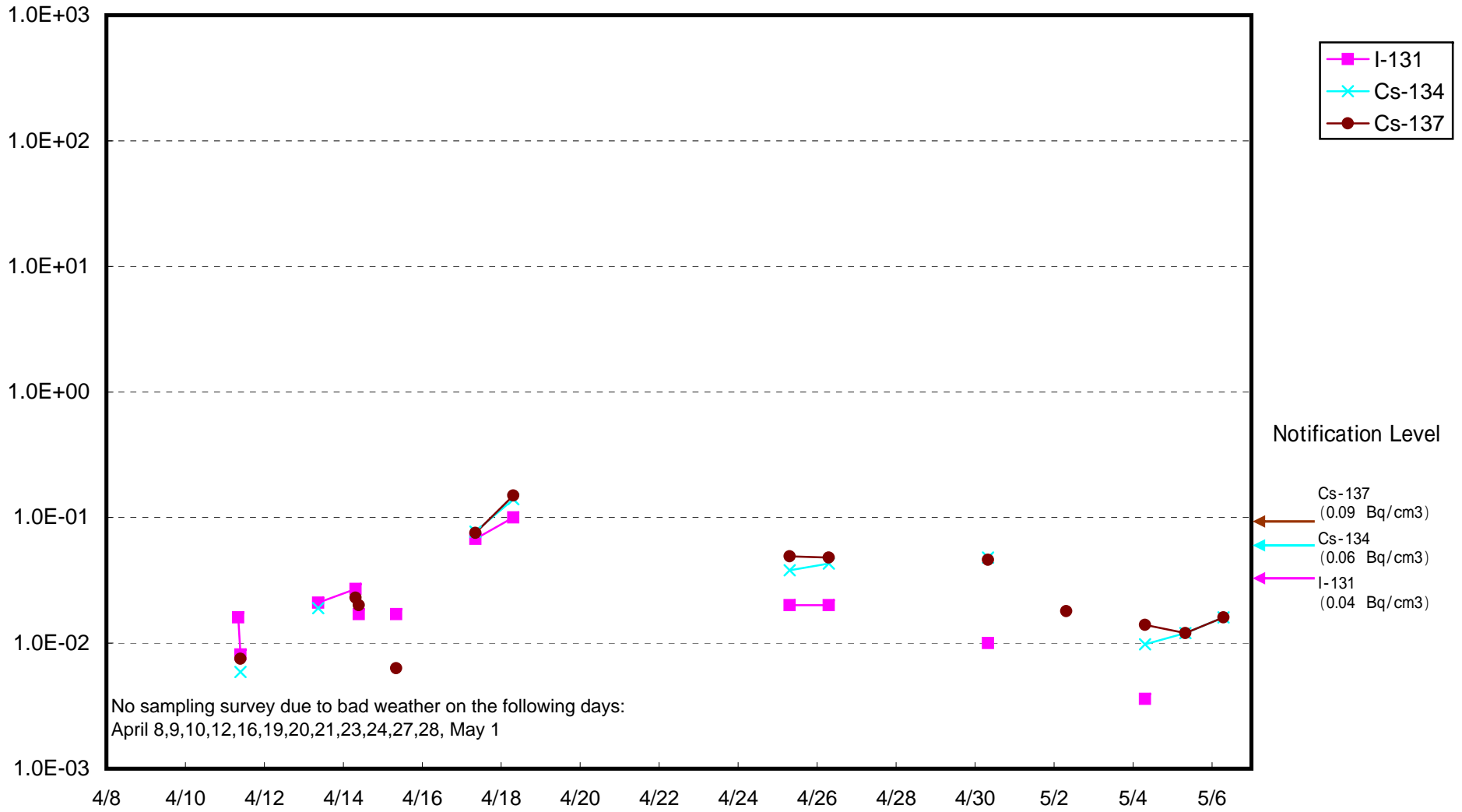
Radioactivity Density of Seawater around approx. 15 km offshore of Fukushima Daini (Bq/cm<sup>3</sup>)



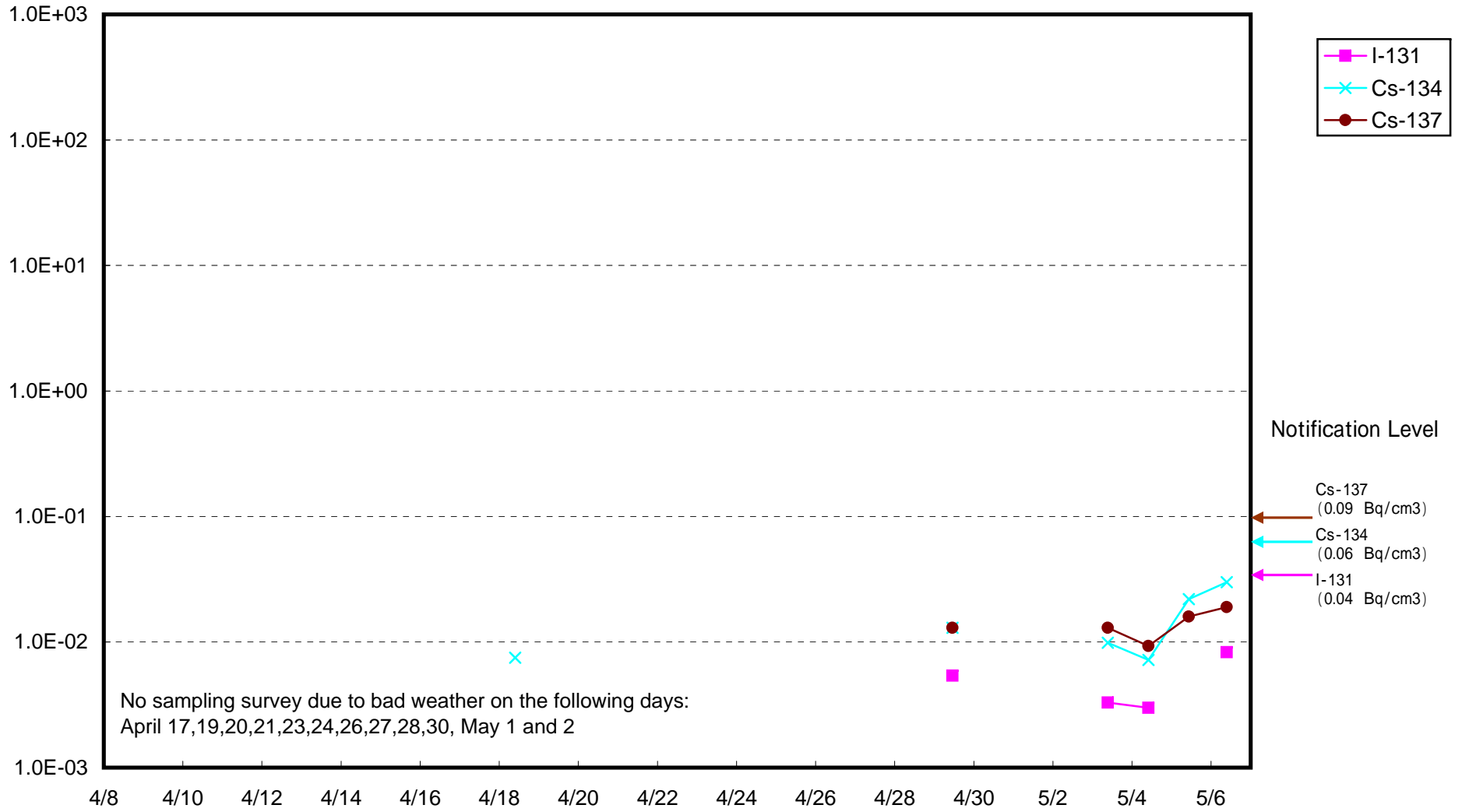
Radioactivity Density of Seawater around approx. 15 km offshore of Iwasawa Shore (Bq/cm<sup>3</sup>)



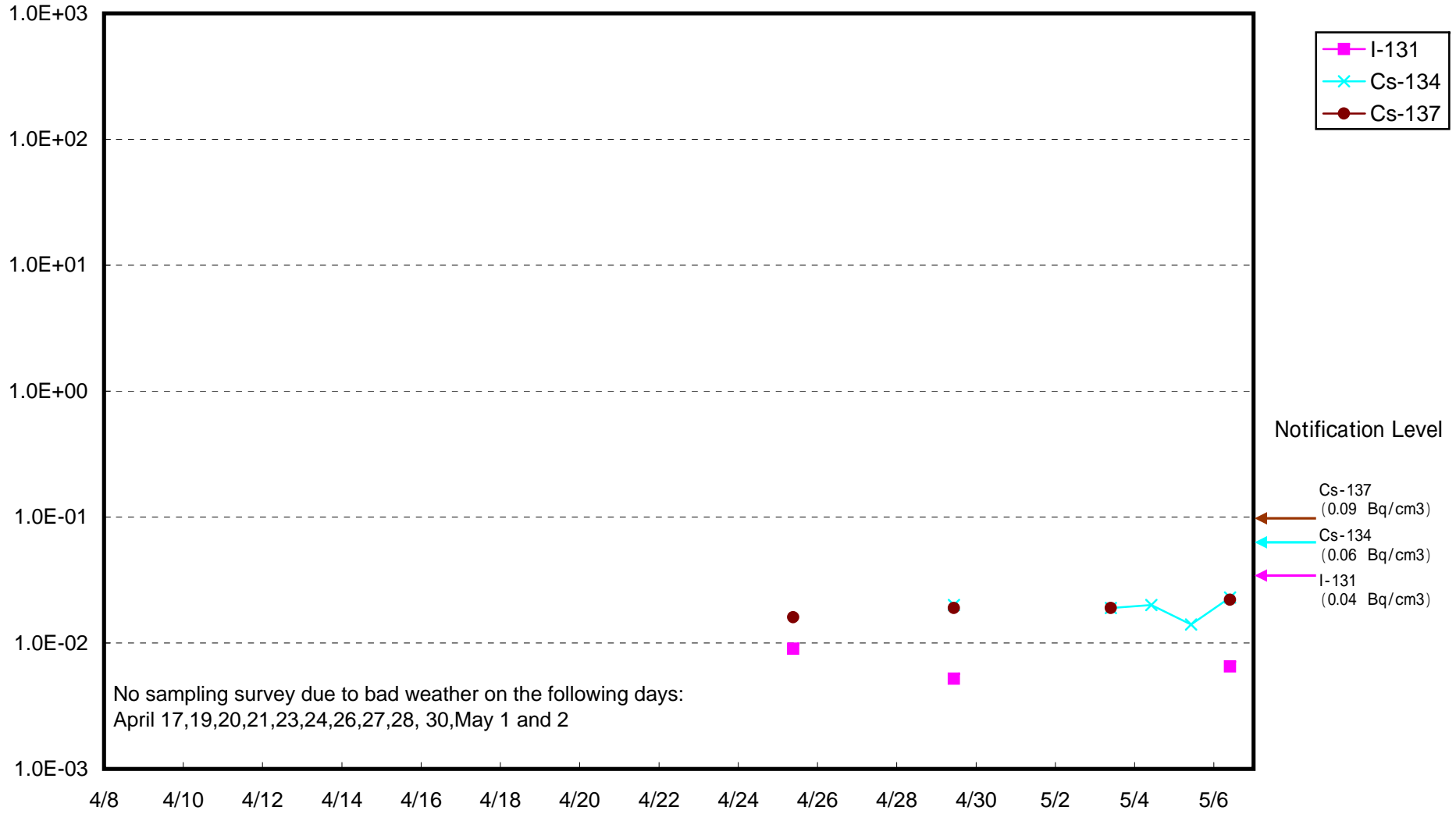
Radioactivity Density of Seawater around approx. 15 km offshore of Hirono-machi (Bq/cm3)



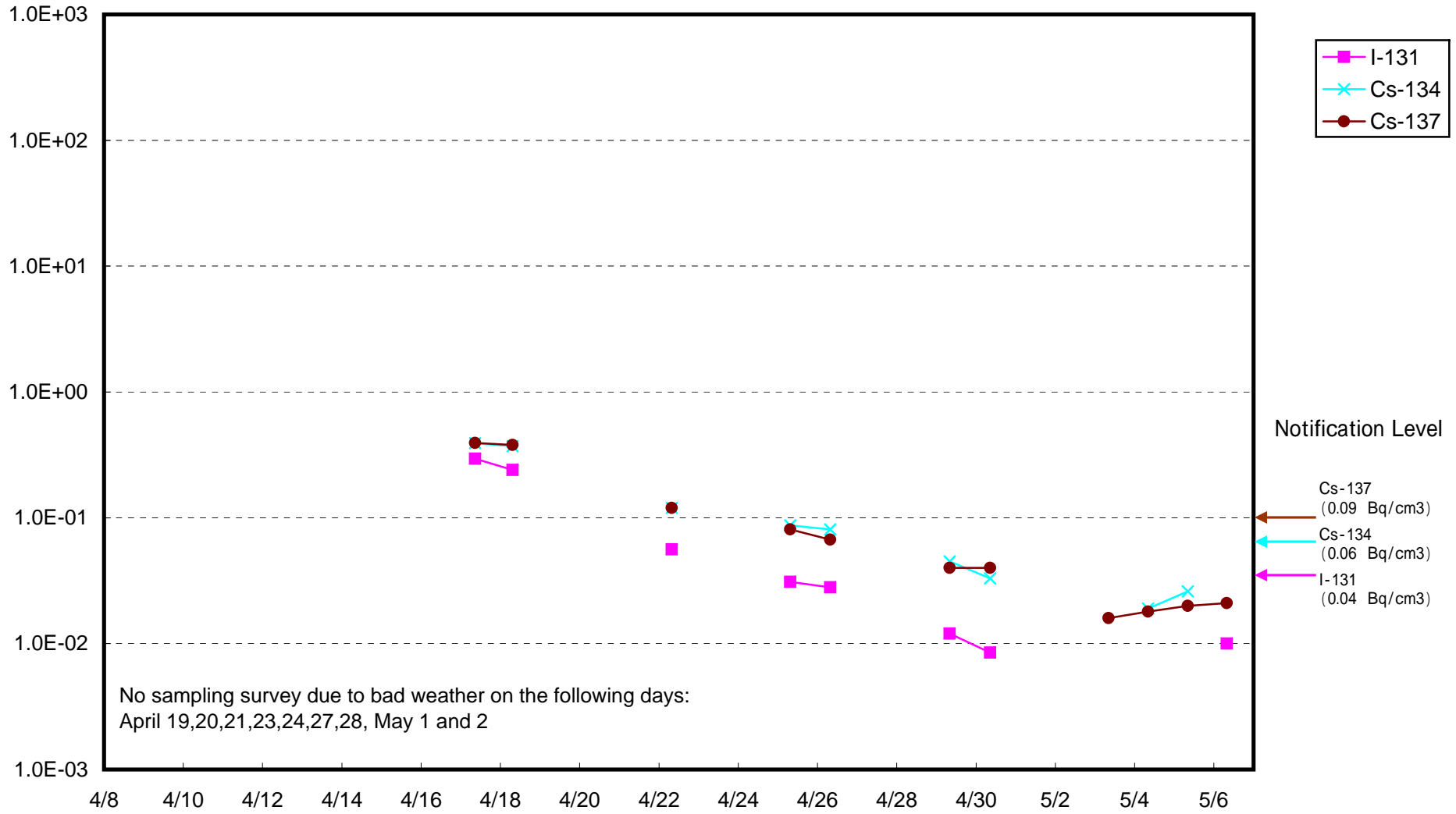
Radioactivity Density of Seawater around 3 km offshore of Haramachi-ku (Bq/cm<sup>3</sup>)



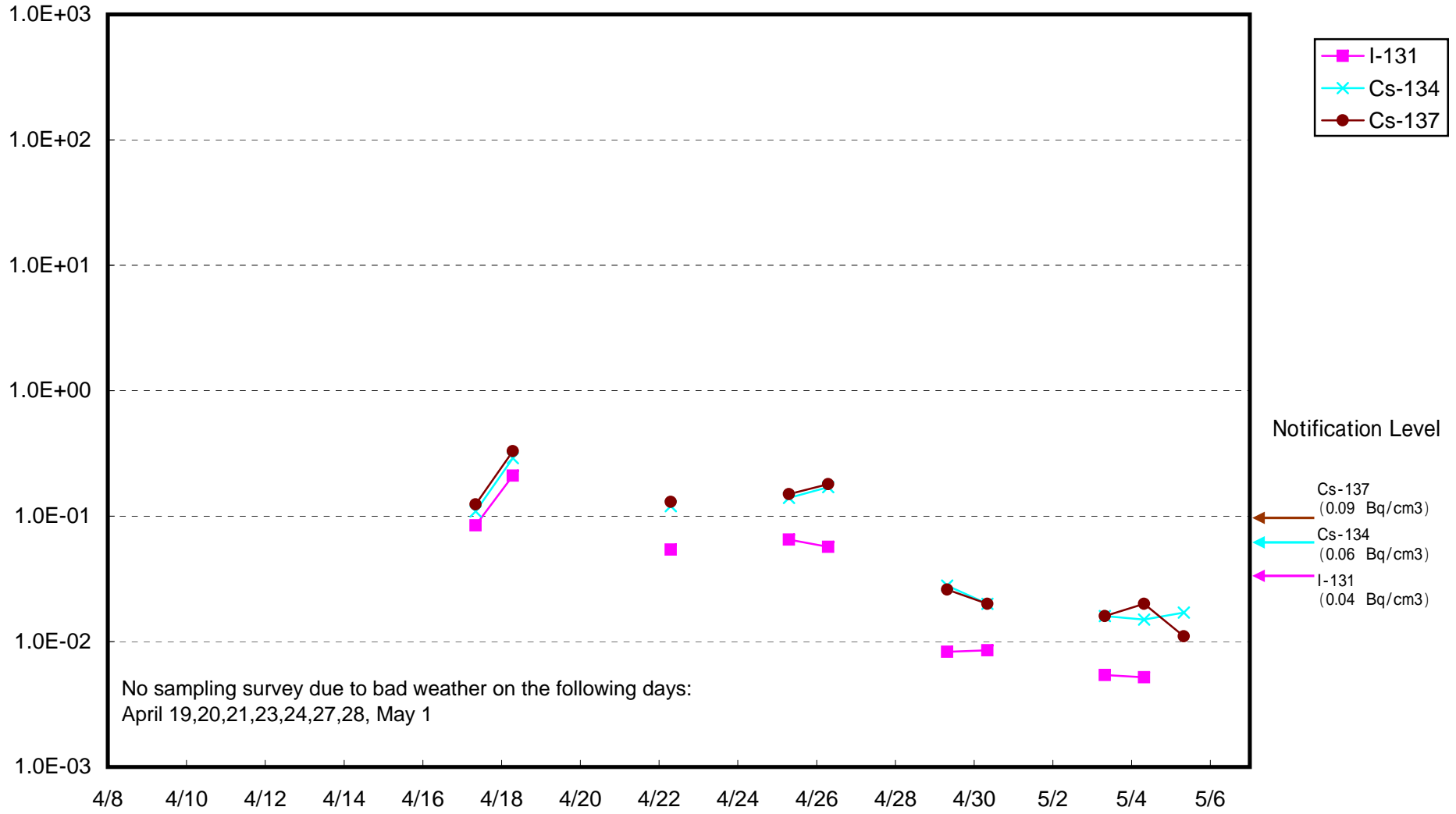
Radioactivity Density of Seawater around 3 km offshore of Odaka-ku (Bq/cm<sup>3</sup>)



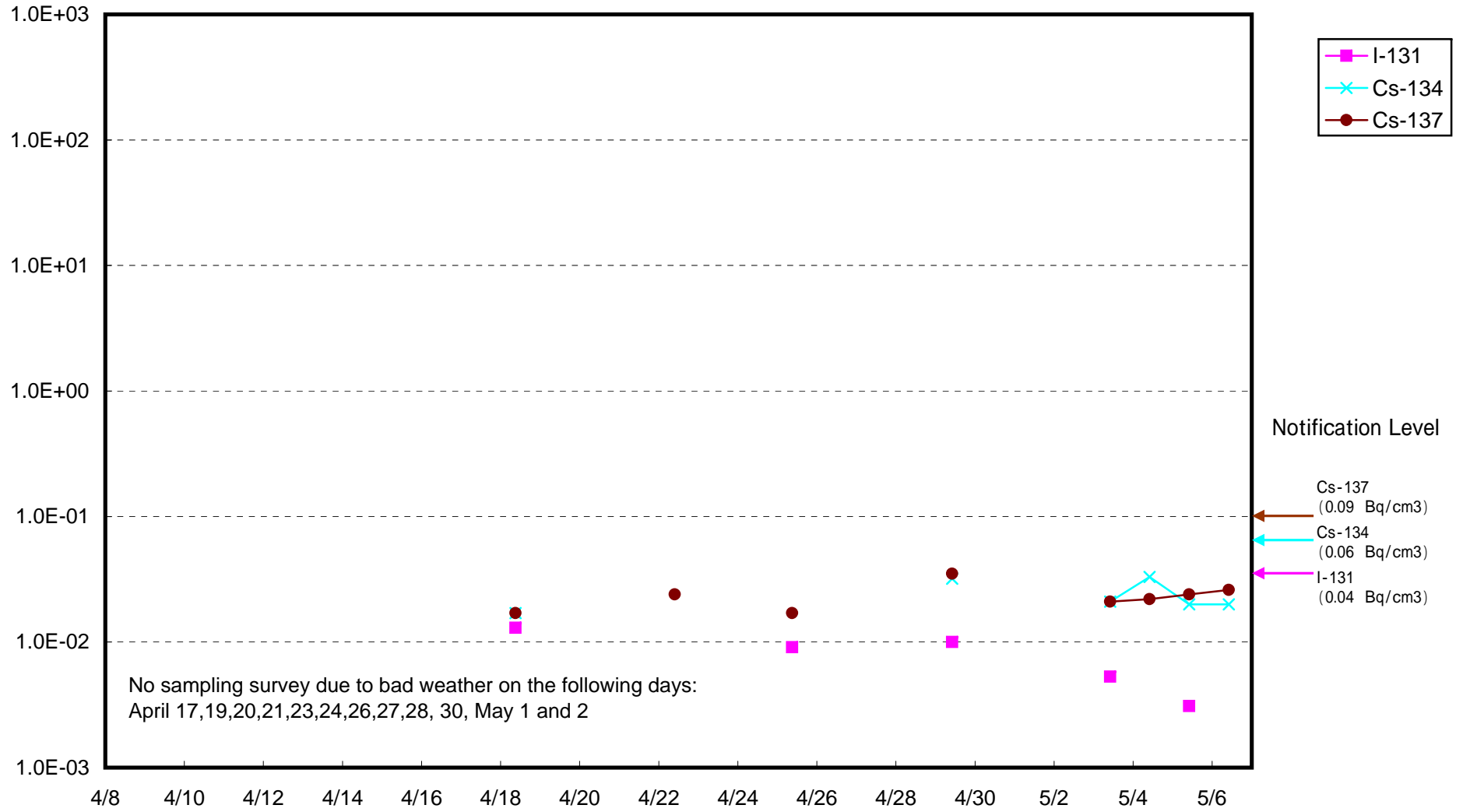
Radioactivity Density of Seawater around 3 km offshore of Iwasawa Shore (Bq/cm<sup>3</sup>)



Radioactivity Density of Seawater around 3 km offshore of the north of Iwaki City (Bq/cm<sup>3</sup>)

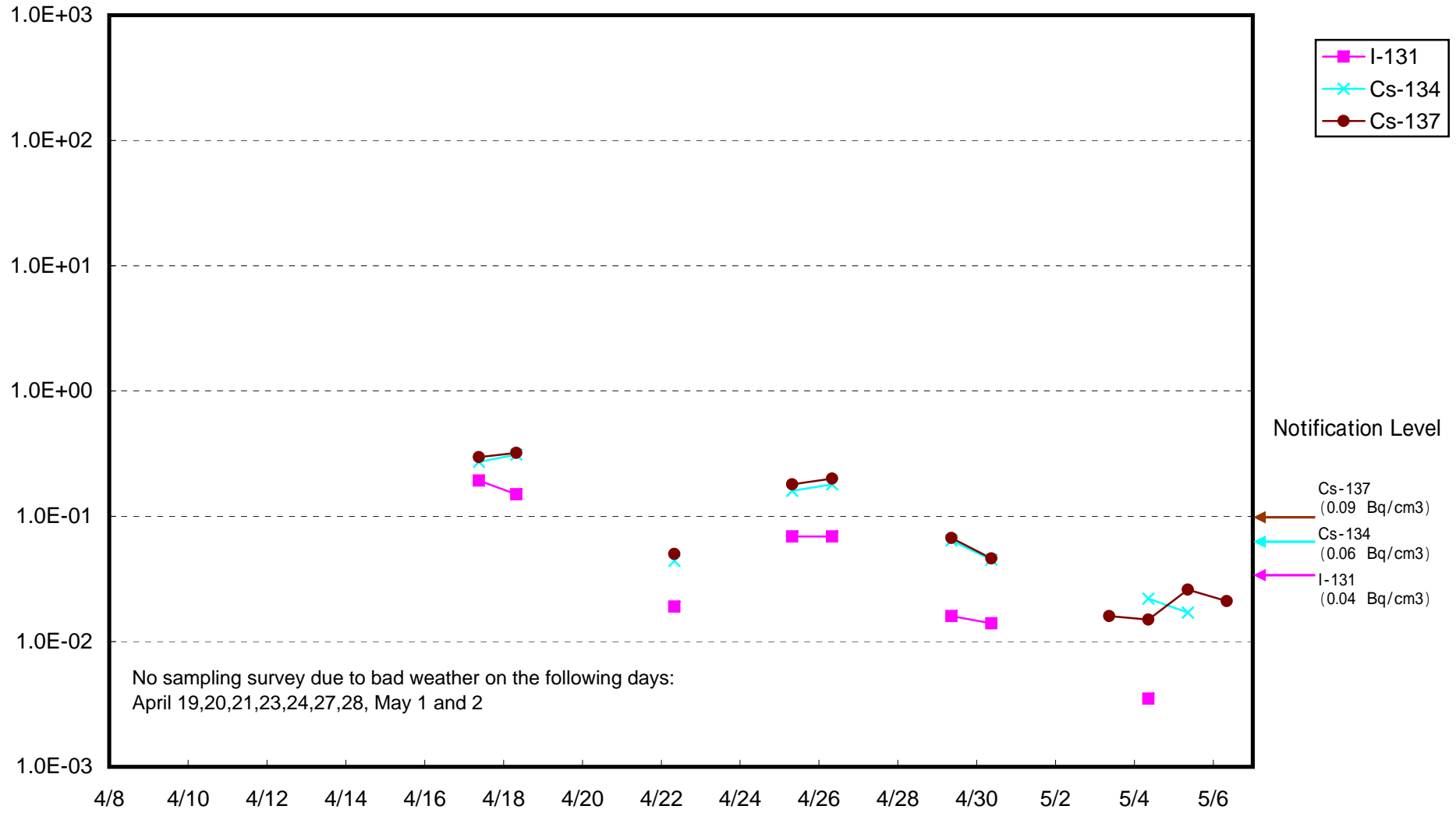


Radioactivity Density of Seawater around 8 km offshore of Odaka-ku (Bq/cm<sup>3</sup>)

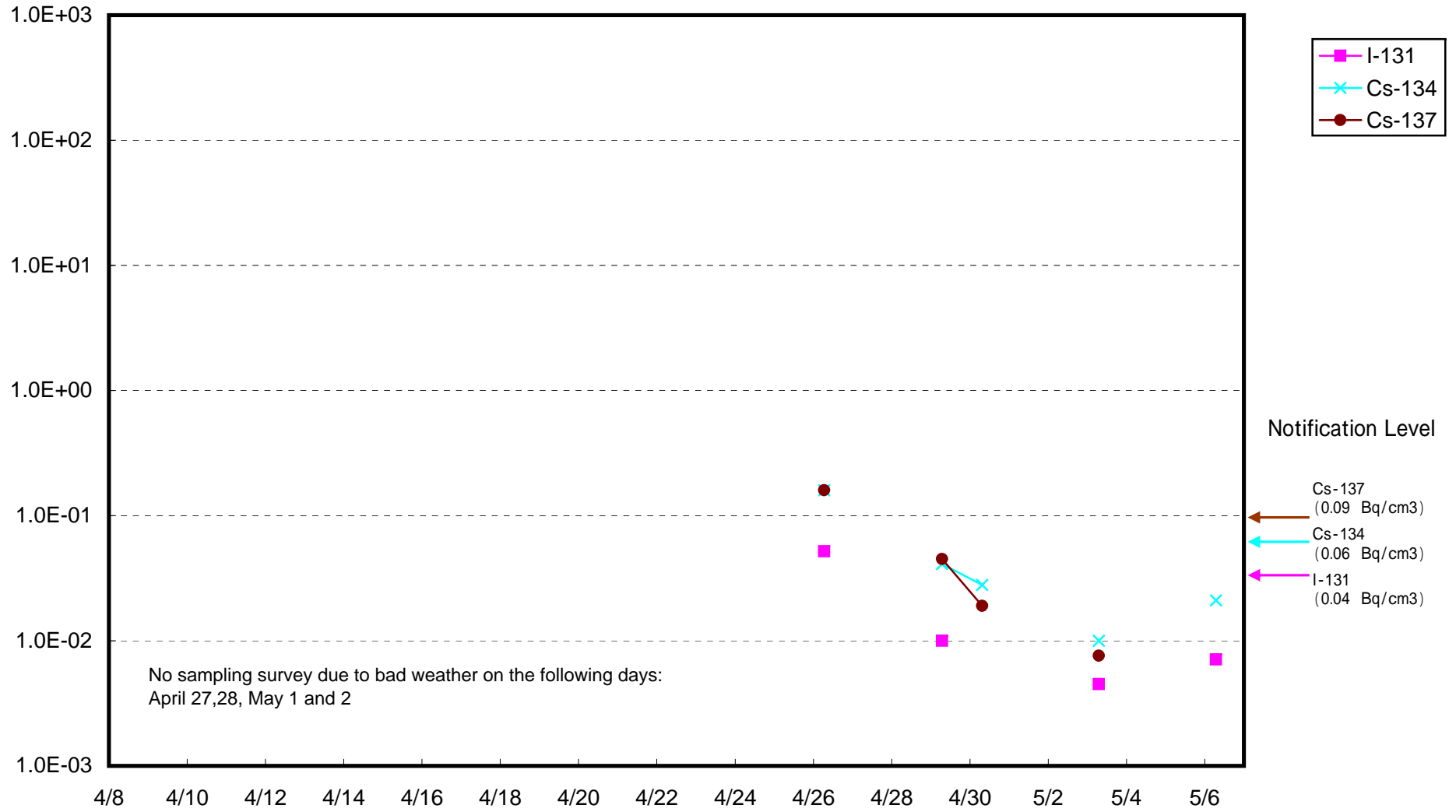




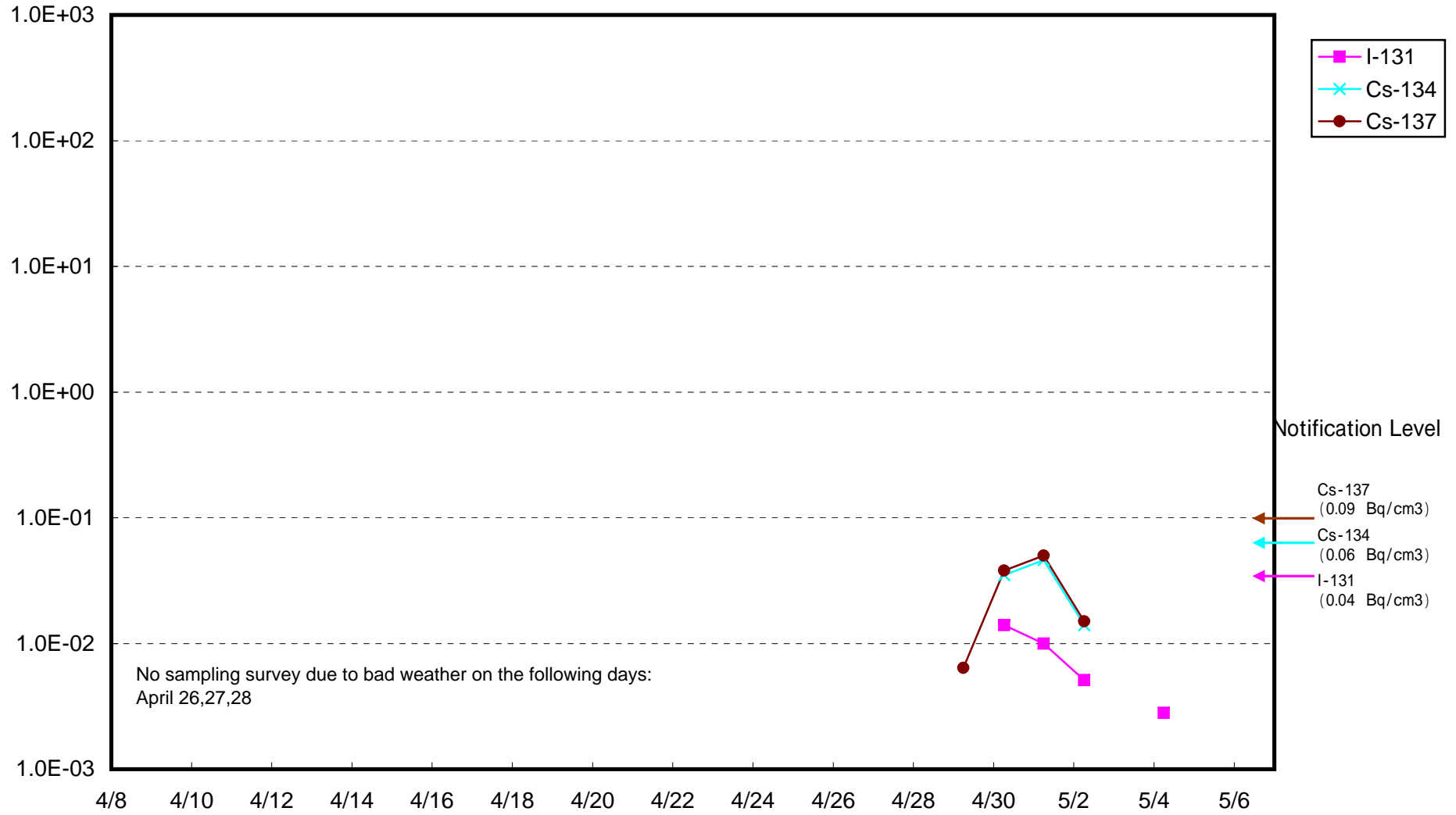
Radioactivity Density of Seawater around 8 km offshore of Iwasawa Shore (Bq/cm<sup>3</sup>)



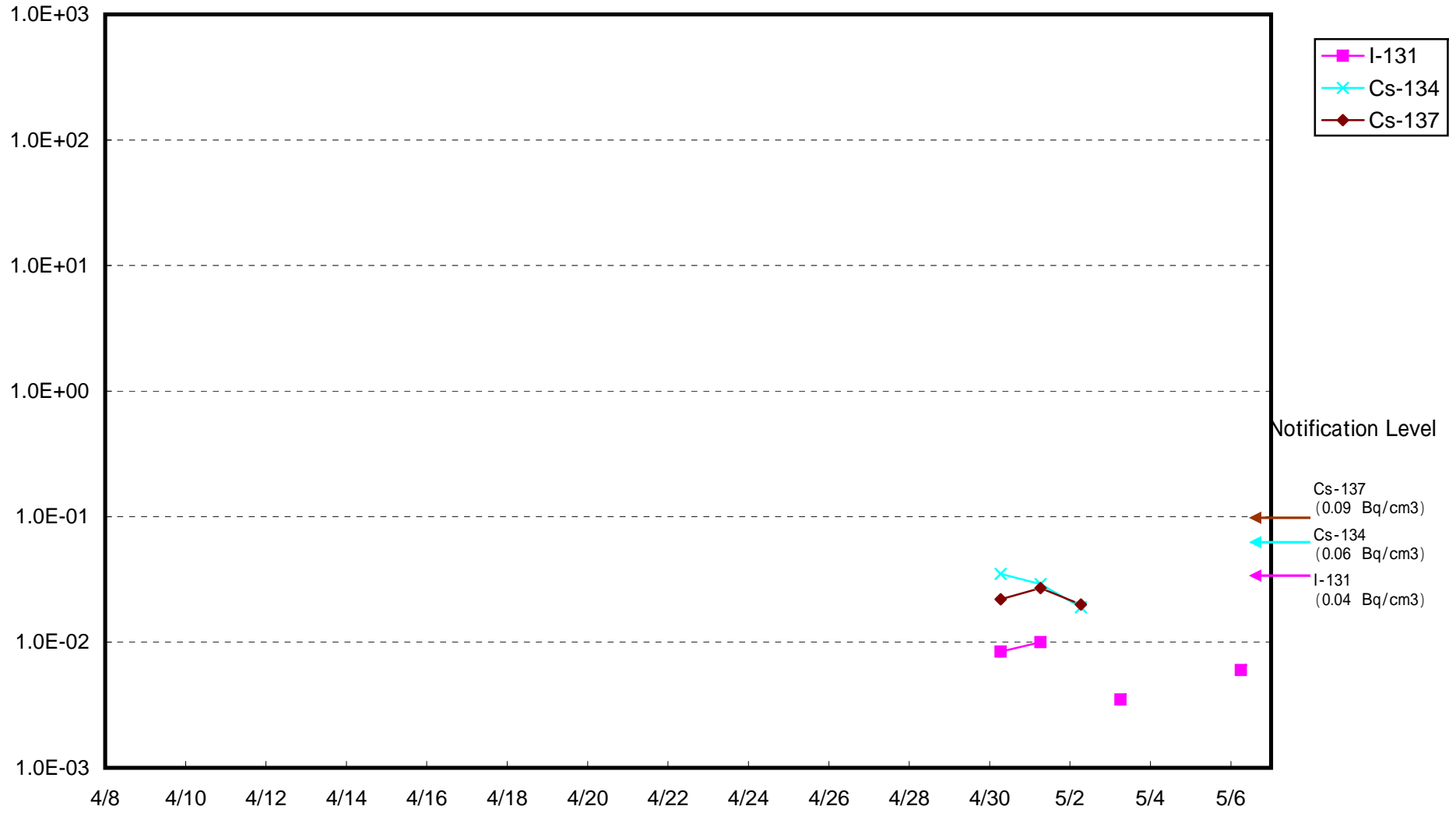
Radioactivity Density of Seawater around 3 km offshore of Natsui River (Bq/cm<sup>3</sup>)



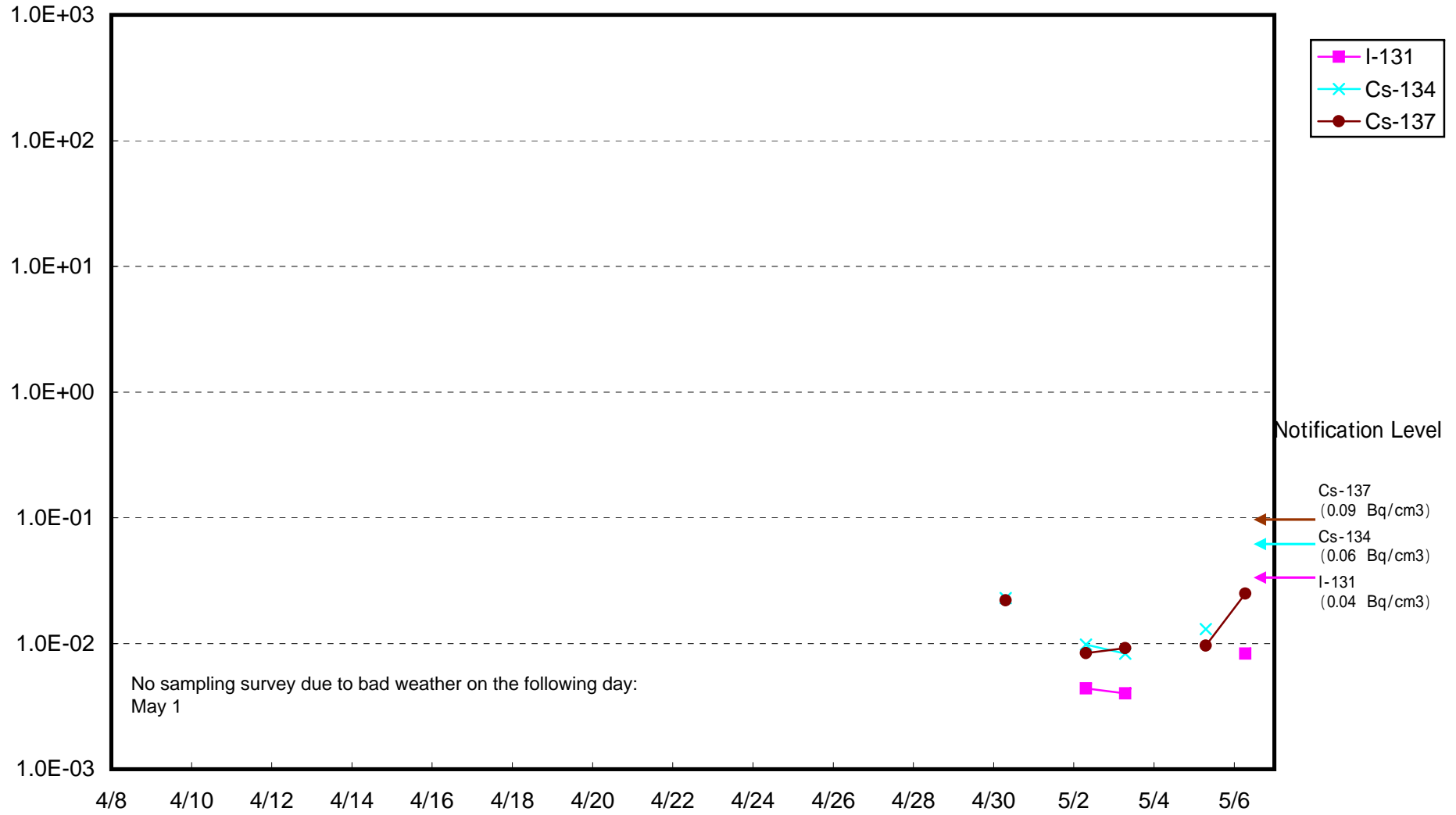
Radioactivity Density of Seawater around 3 km offshore of Onahama Port (Bq/cm<sup>3</sup>)



Radioactivity Density of Seawater around 3 km offshore of Ena (Bq/cm<sup>3</sup>)



Radioactivity Density of Seawater around 3 km offshore of Numanouchi (Bq/cm<sup>3</sup>)



Radioactivity Density of Seawater around 3 km offshore of Toyoma (Bq/cm<sup>3</sup>)

