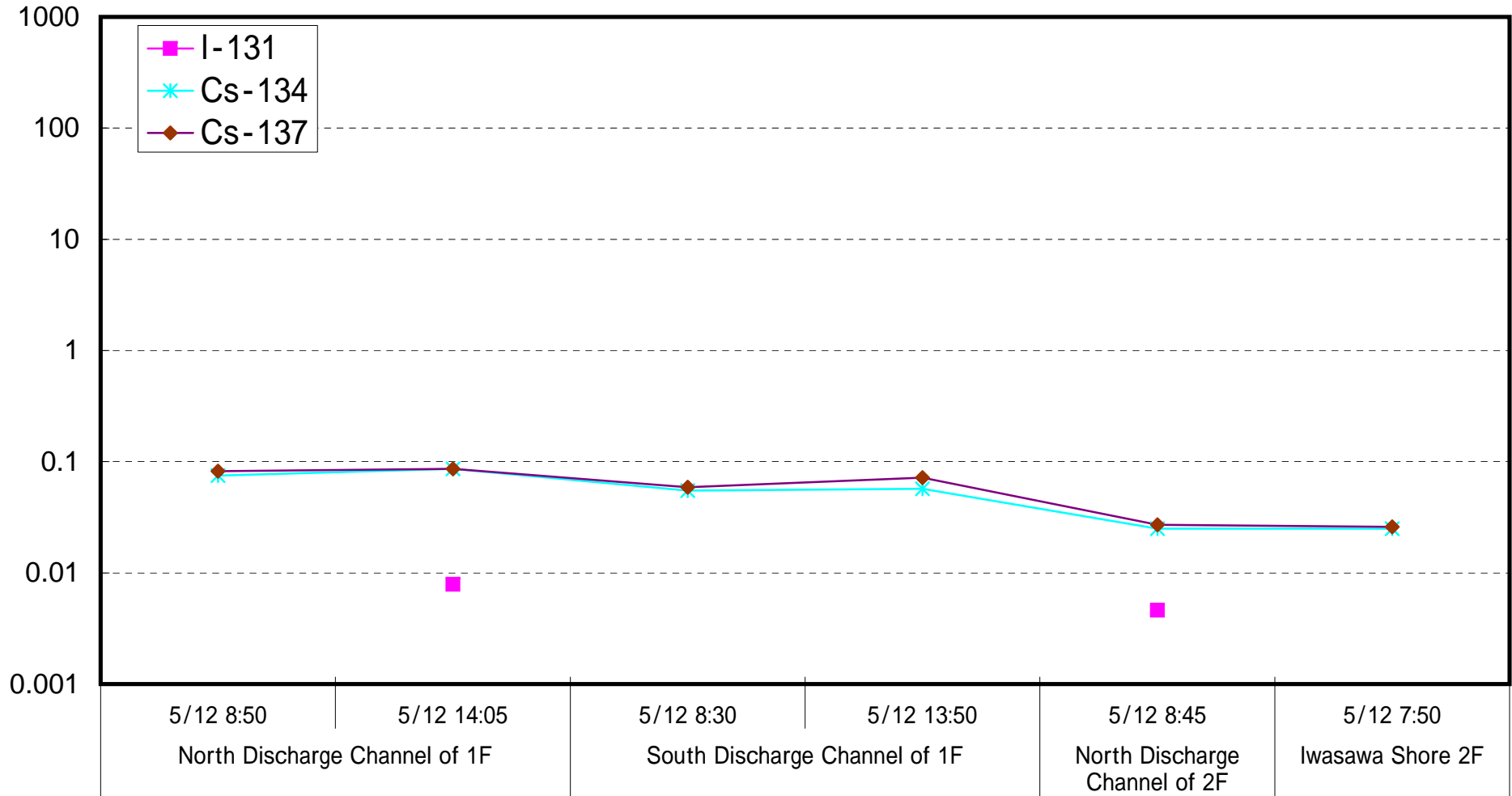
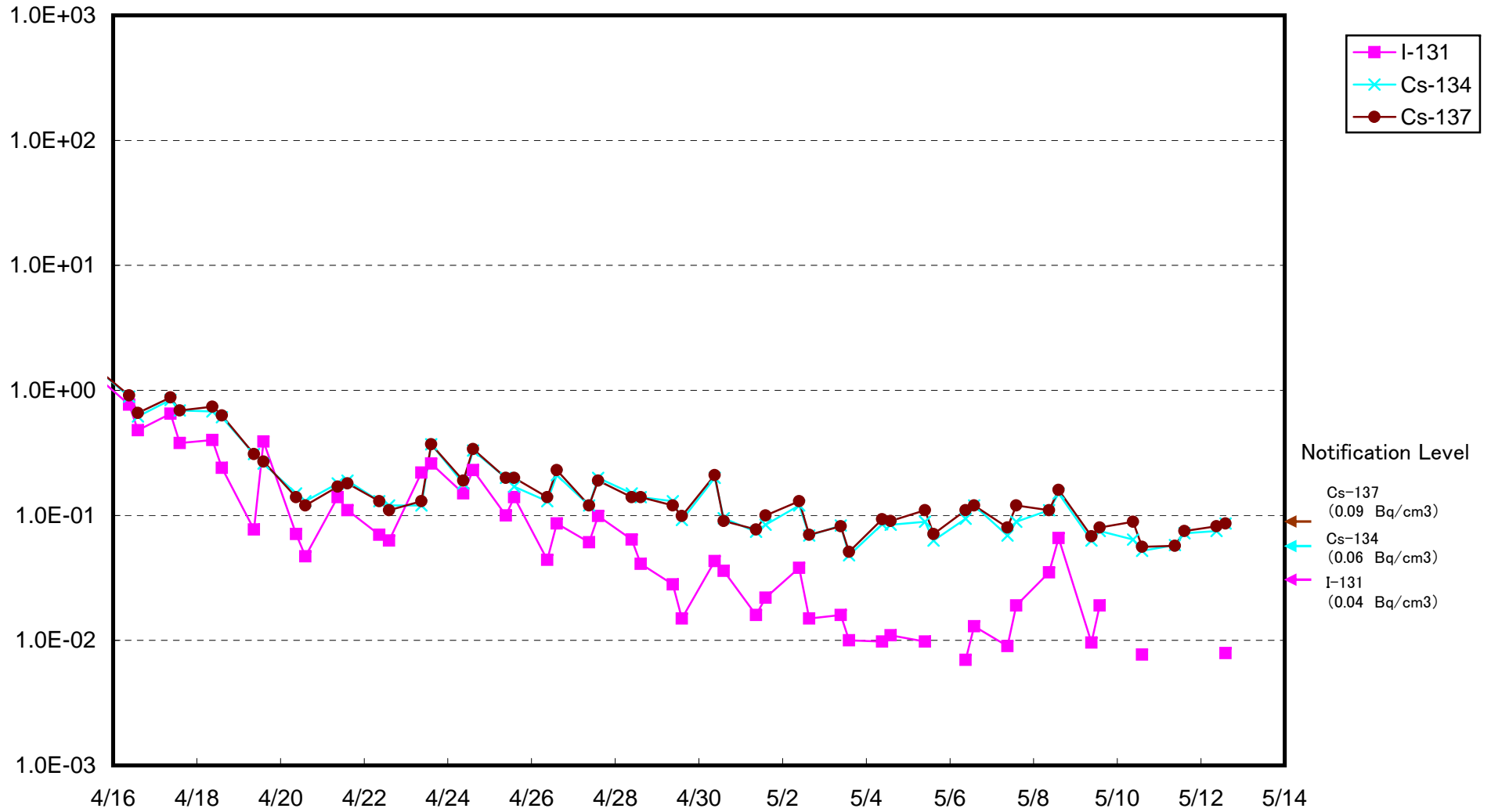


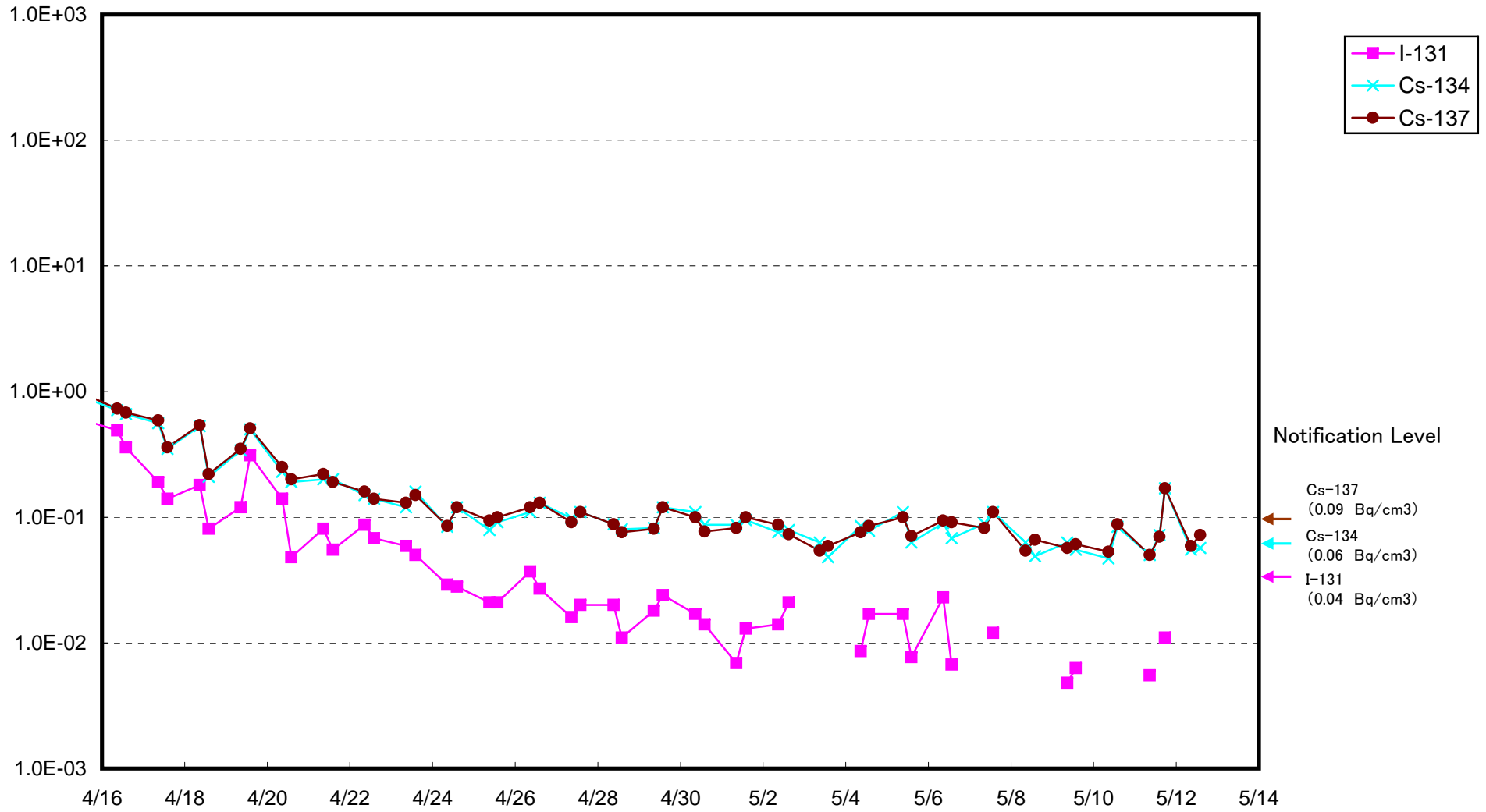
Radioactive Density of Seawater (Bq/cm³)



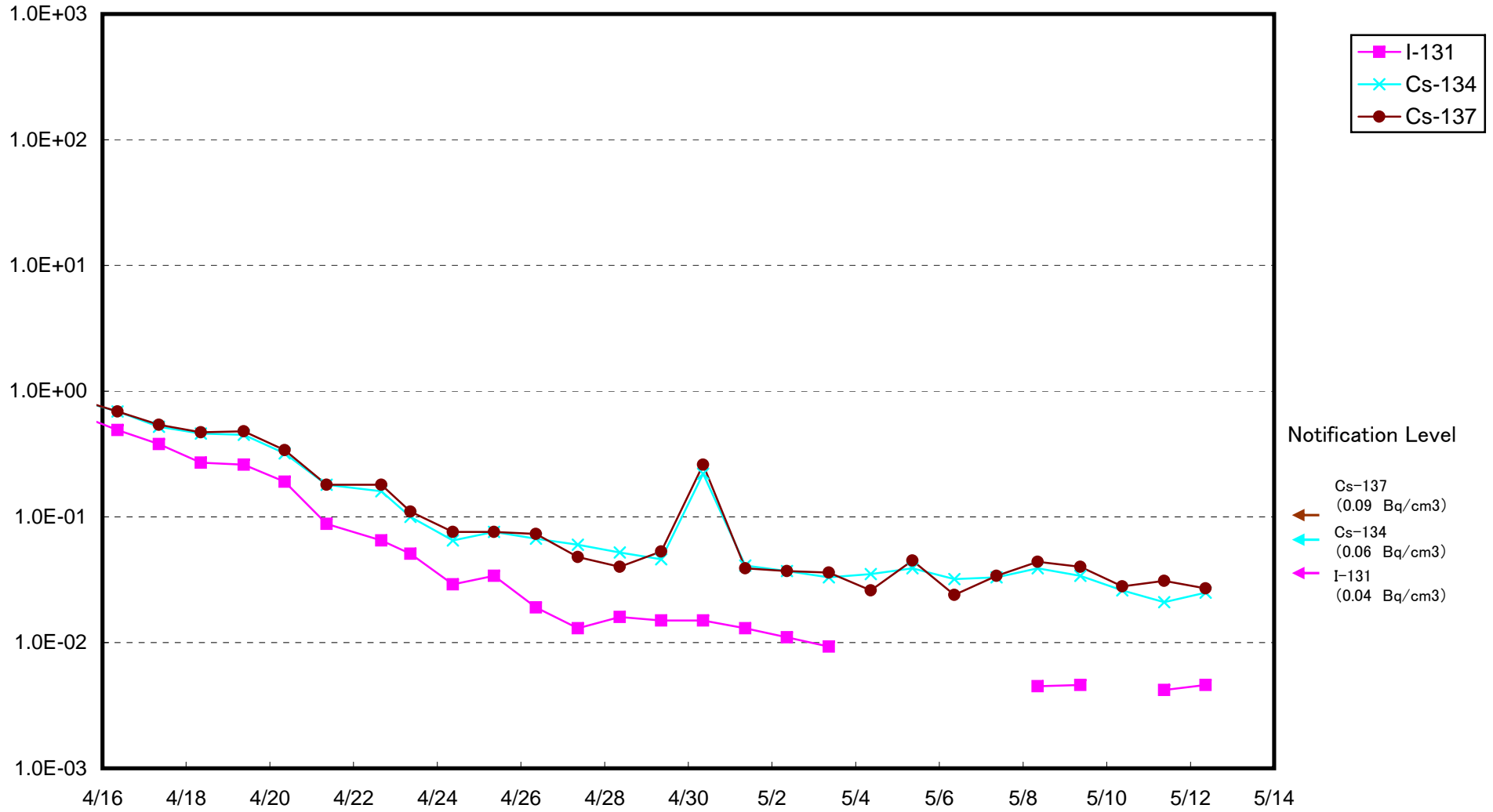
Radioactivity Density of Seawater at North of 1F5-6 Discharge Channel (approx.30m north of 5-6 discharge channel)
(Bq/cm³)



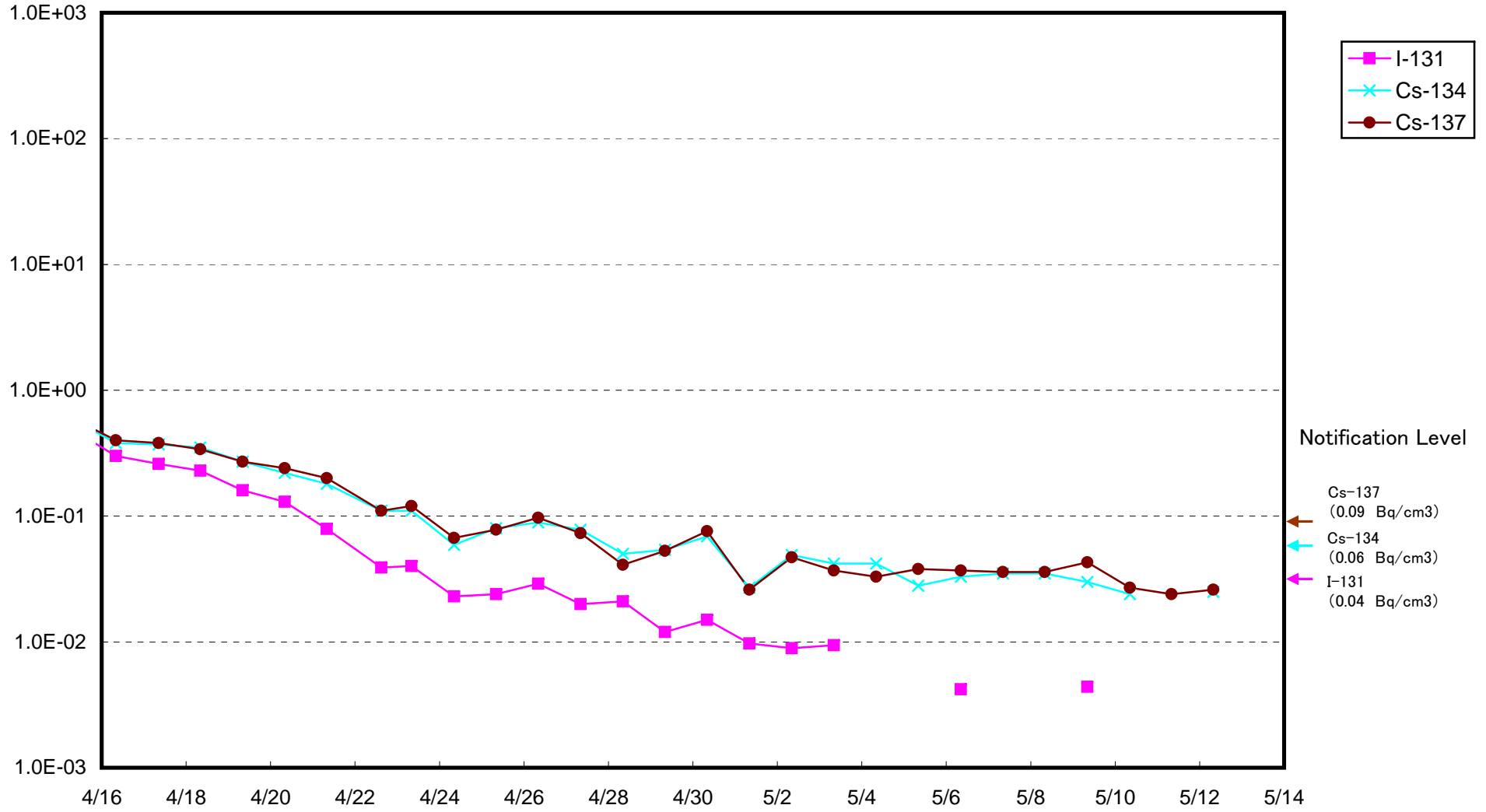
Radioactivity Density of Seawater at South Discharge Channel of 1F (Bq/cm³)



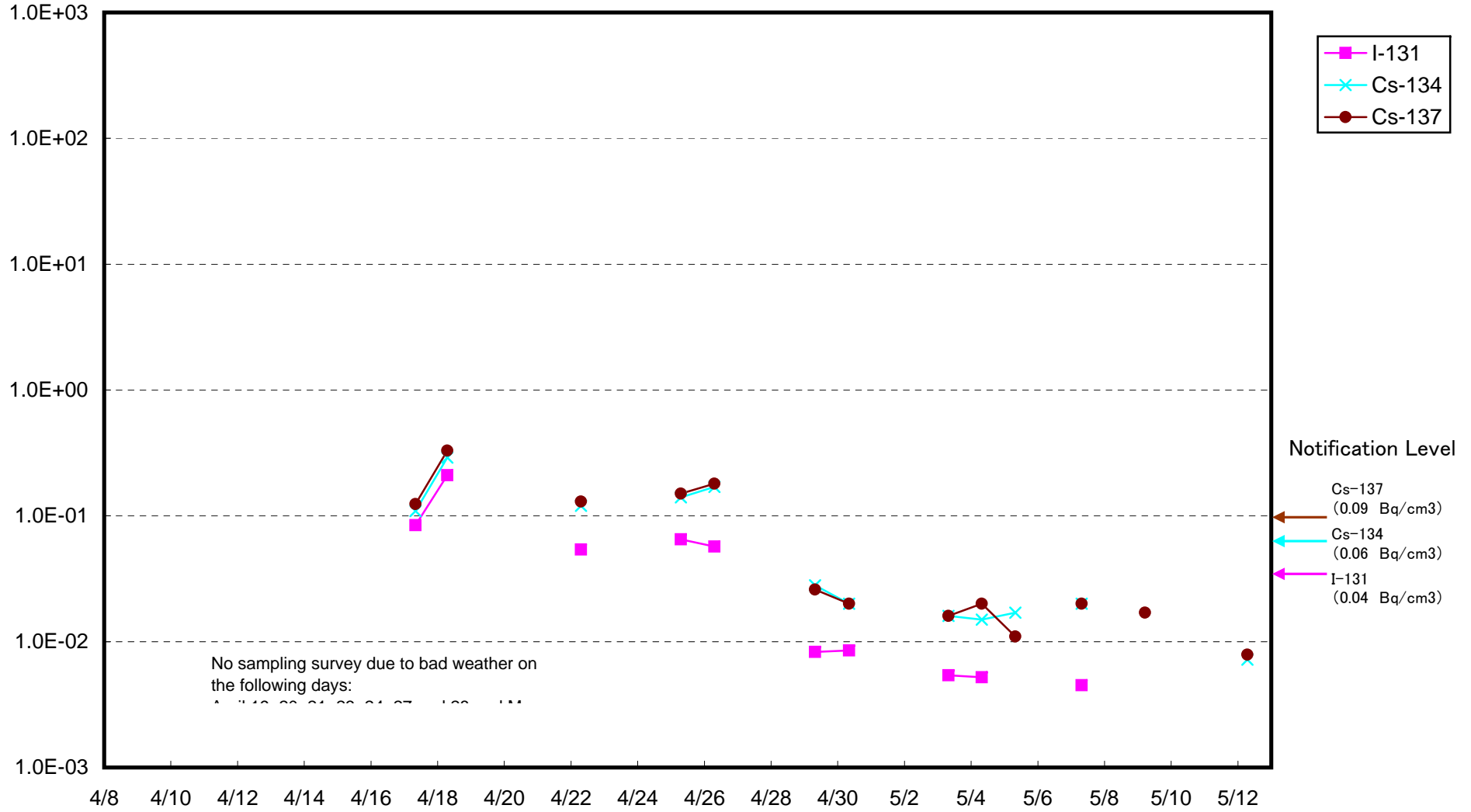
Radioactivity Density of Seawater at North Discharge Channel of 2F (Bq/cm³)



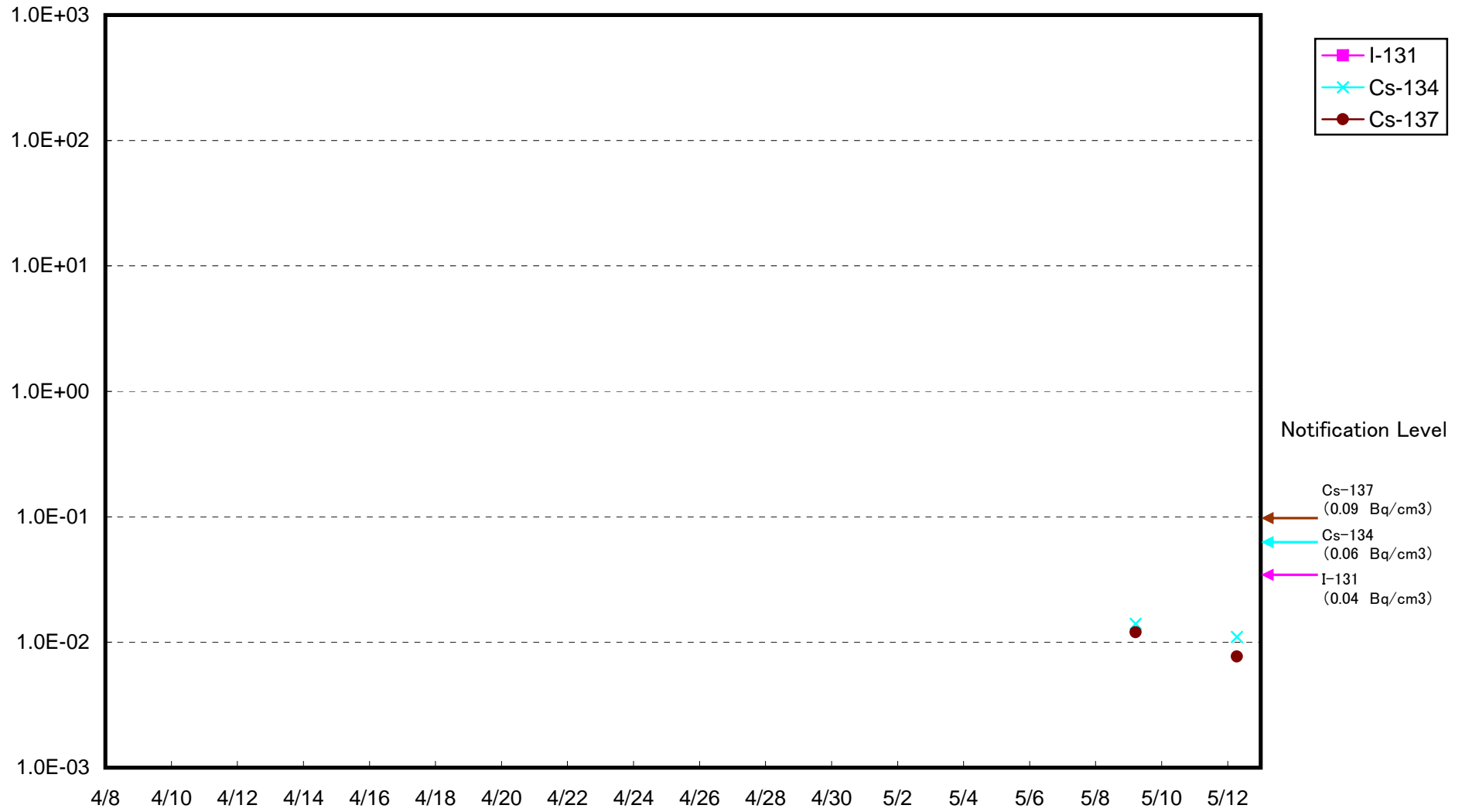
Radioactivity Density of Seawater at Iwasawa Shore 2F (Bq/cm³)



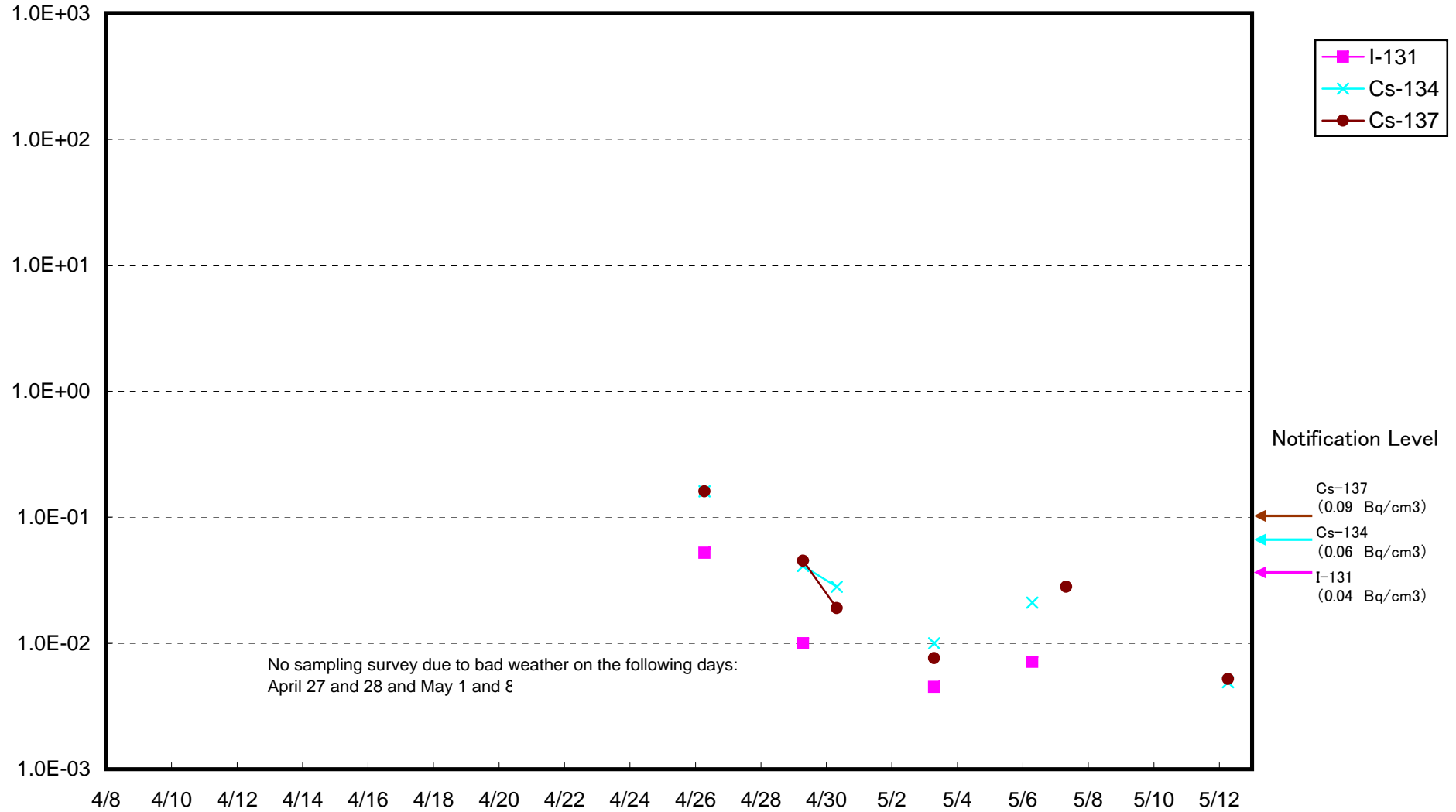
Radioactivity Density of Seawater around 3 km offshore of north Iwaki City "Uower Layer"
(Bq/cm³)



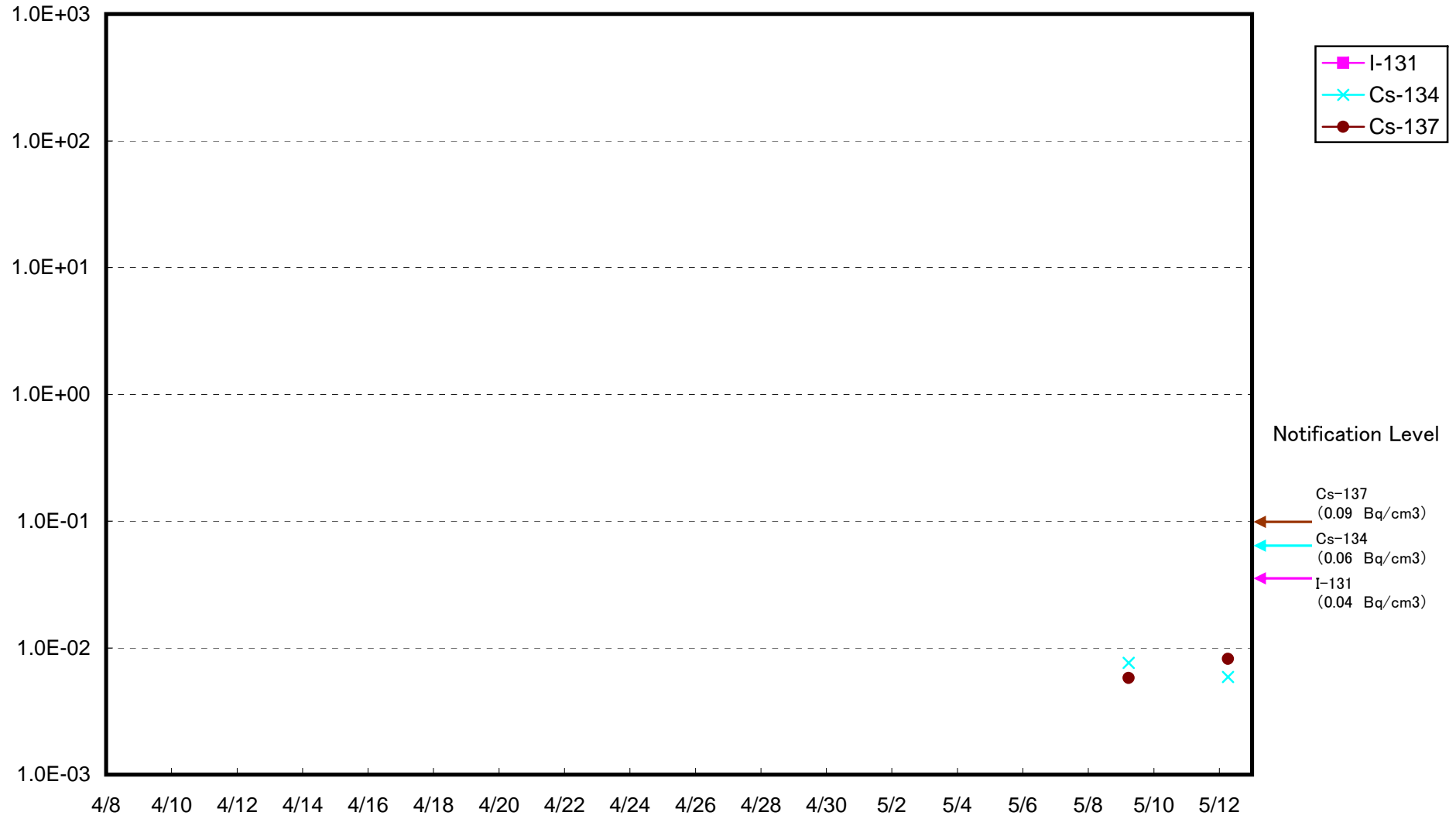
Radioactivity Density of Seawater around 3 km offshore of north Iwaki City "Lower Layer"
(Bq/cm³)



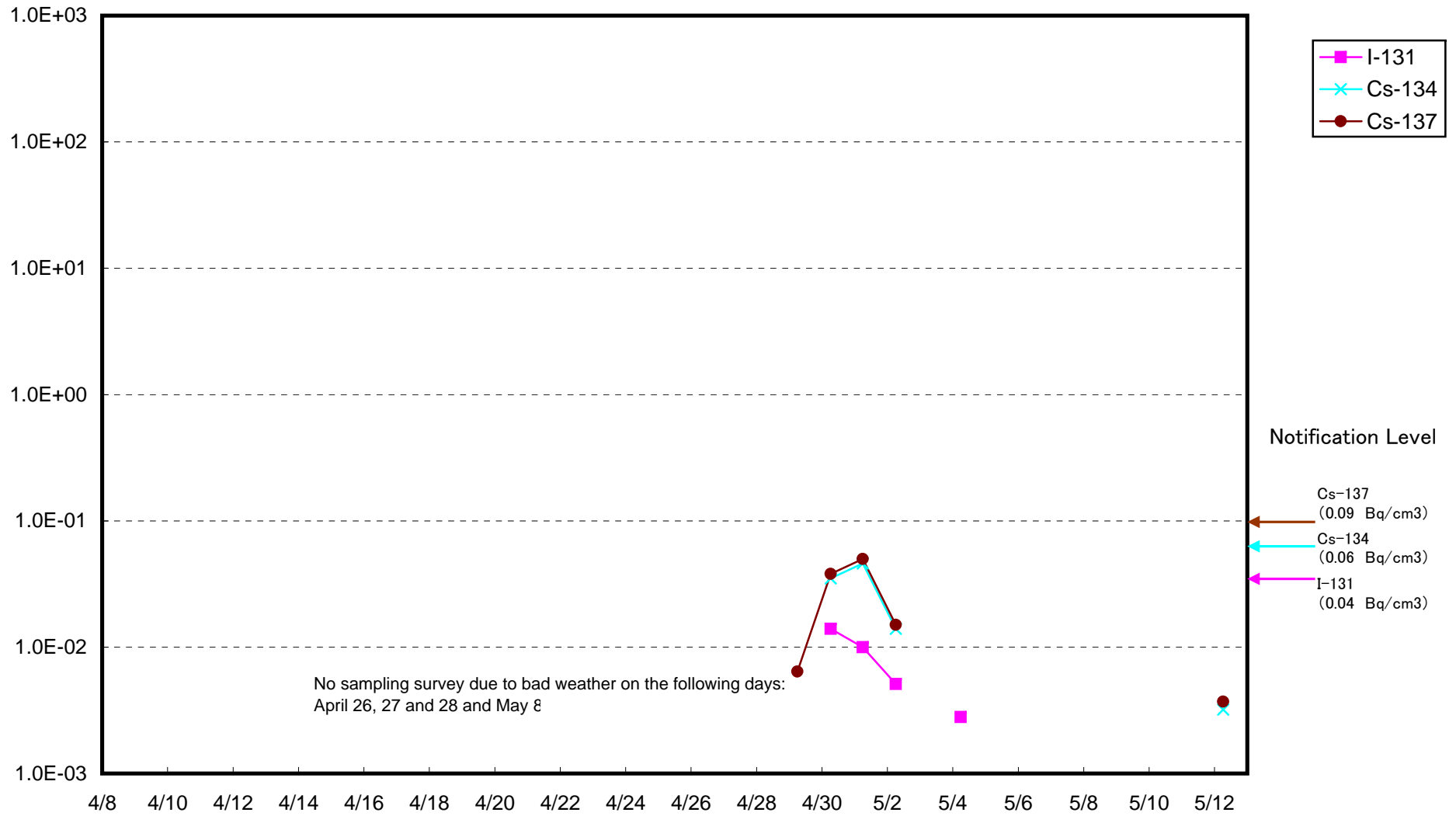
Radioactivity Density of Seawater around 3 km offshore of Natsui River "Upper Layer"
(Bq/cm³)



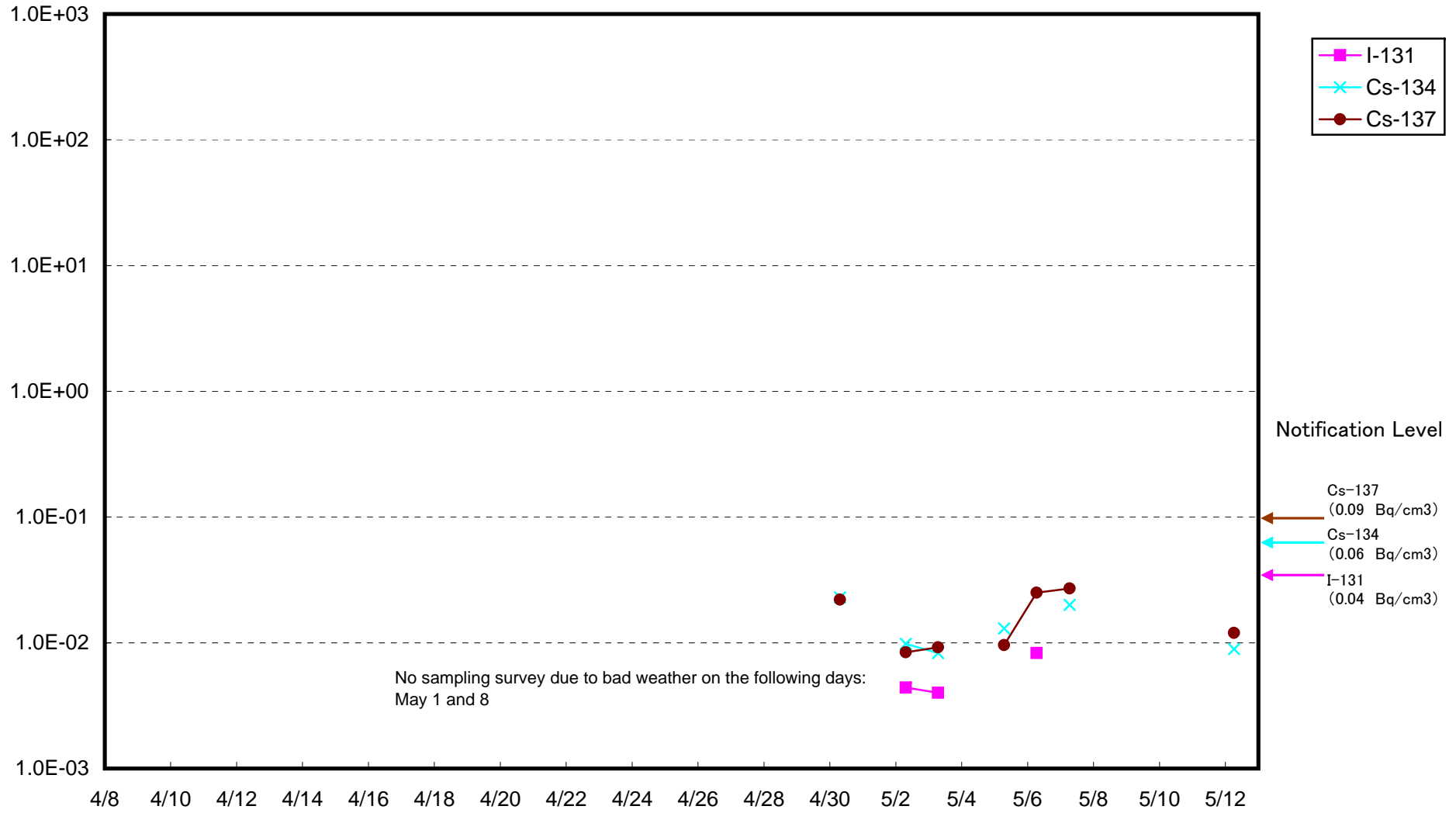
Radioactivity Density of Seawater around 3 km offshore of Natsui River "Lower Layer"
(Bq/cm³)



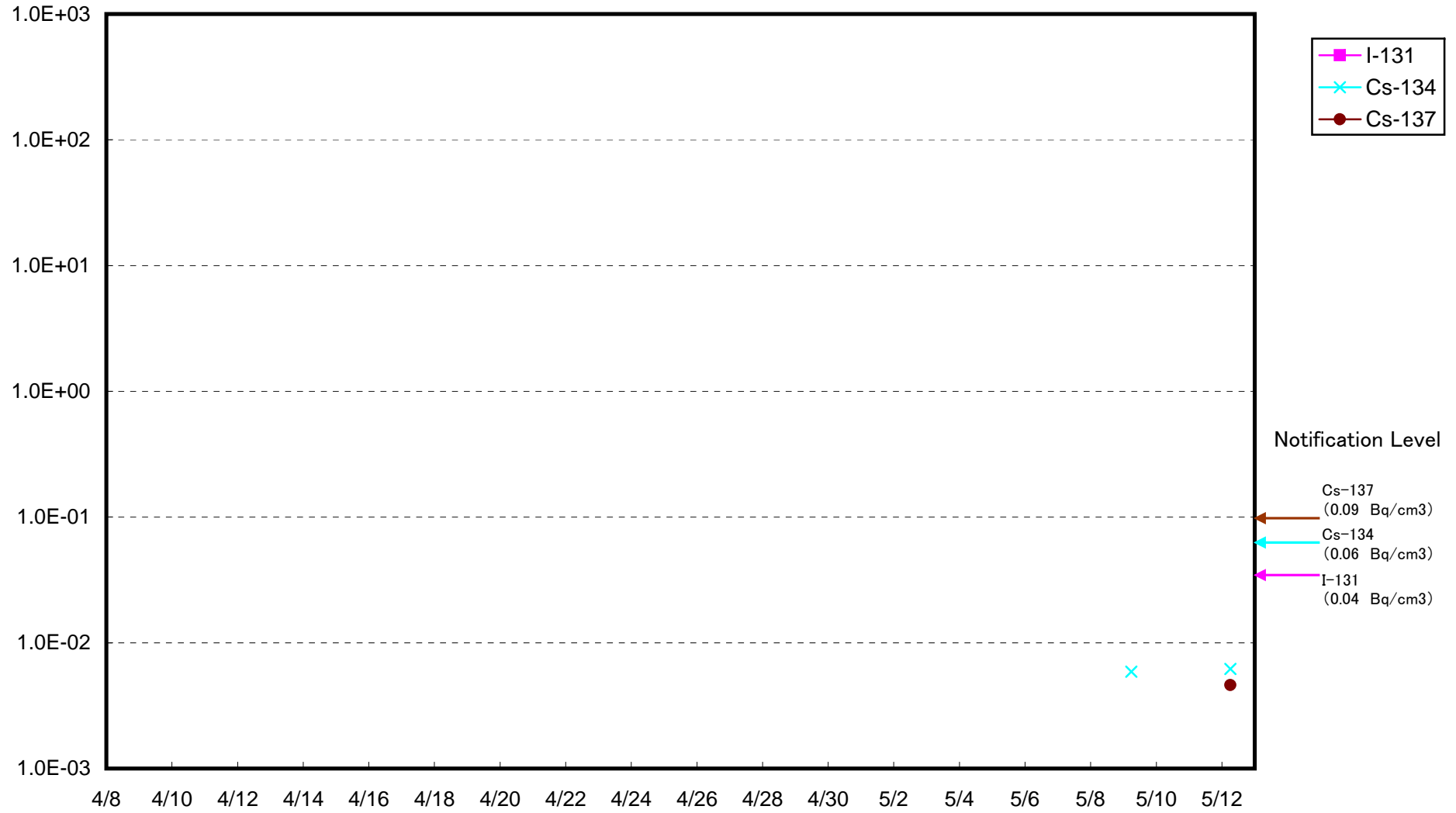
Radioactivity Density of Seawater around 3 km offshore of Onahama Port "Upper Layer"
(Bq/cm³)



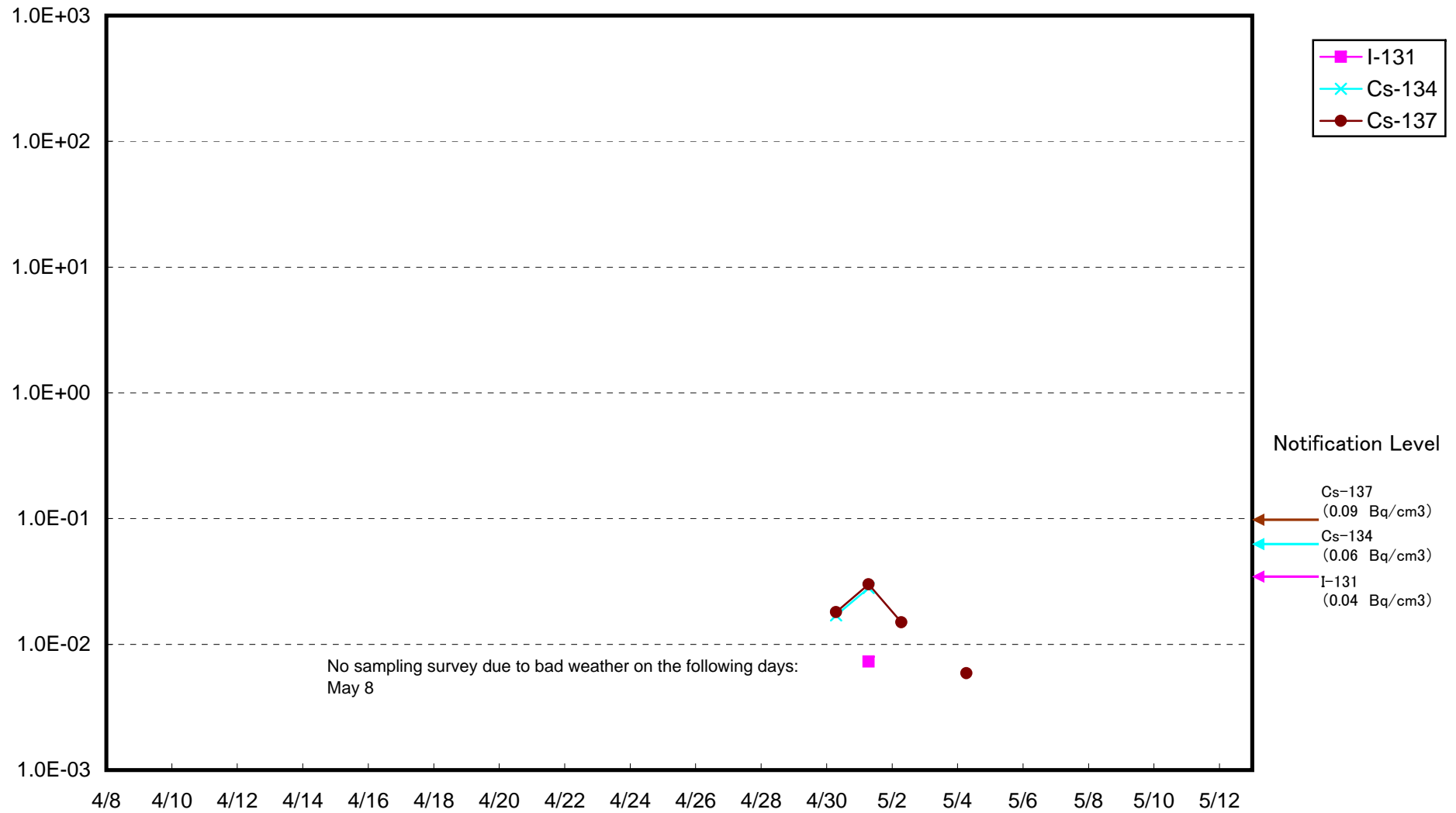
Radioactivity Density of Seawater around 3 km offshore of Numanouchi "Upper Layer"
(Bq/cm³)



Radioactivity Density of Seawater around 3 km offshore of Numanouchi "Lower Layer"
(Bq/cm³)



Radioactivity Density of Seawater around 3 km offshore of Toyoma "Upper Layer"
(Bq/cm³)



Radioactivity Density of Seawater around 3 km offshore of Toyoma "Lower Layer"
(Bq/cm³)

